

## Creating a log

---

### Info

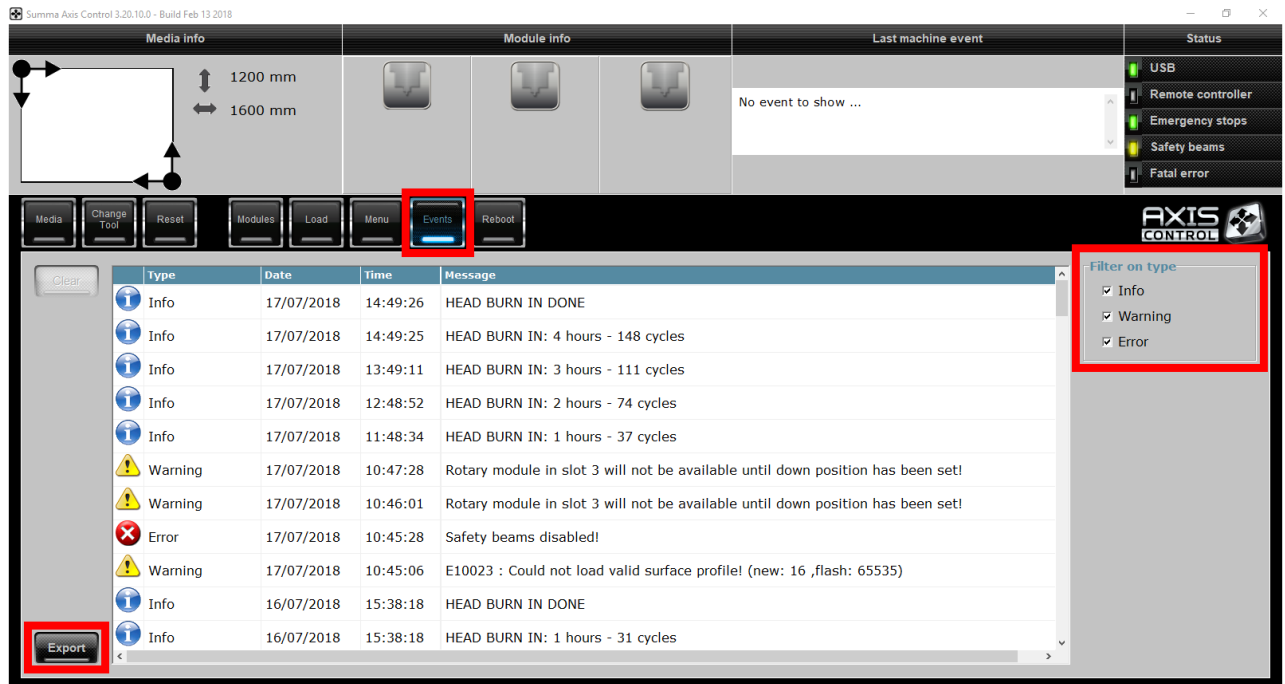
This procedure describes how to make a log of all events recorded by the machine.

The log can be used to send to a (Summa) service engineer for examination.

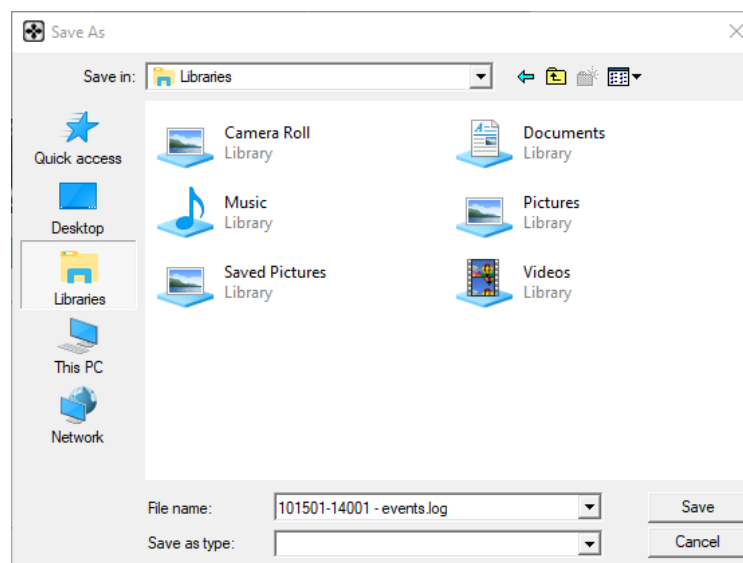
### Creating a log

To create a log, follow the next procedure:

1. Switch off the machine.
2. Connect the machine with the computer using the USB cable.
3. Start Summa Axis Control.
4. Power on the machine.
5. Wait for the machine to complete its power on routine.
6. Click [Events]
7. Select all filter options in the “Filter on type”.
8. Click [Export].



- Select the folder to where the log has to be written to and click [Save].



The name used for the log file will be the serial number of the machine. This name can be altered to satisfy your needs.

- Summa Axis Control will now read all events from the machine and write it to the specified location using the specified name.