

## Summa GoProduce Backside Cutting

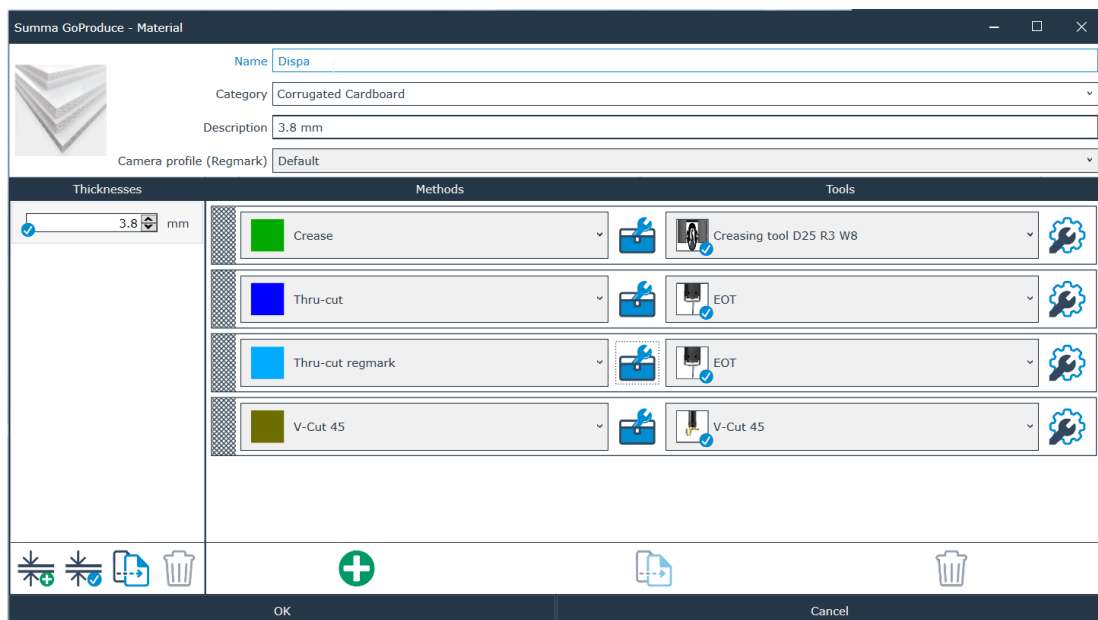
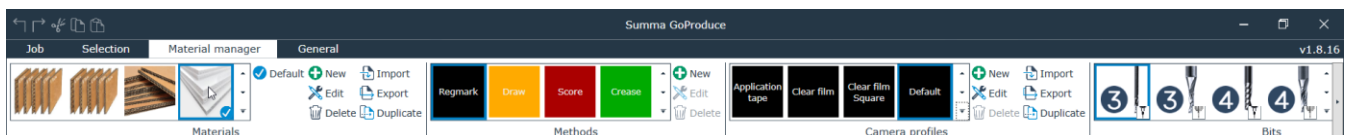
Some printed jobs require that they are processed from the non-printed side (backside). As there are no markers on the backside this has to be approached differently. Summa GoProduce has a pre-configured action set for this.

Video link: <https://www.summa.eu/video/backside-cutting>

### Setting up material manager

Follow these steps to setup the material in the most optimal way.

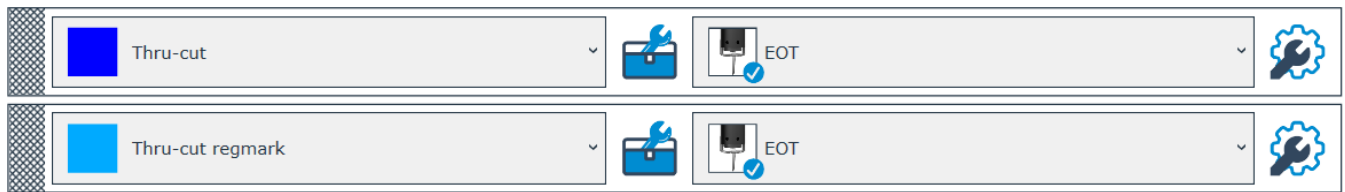
- Select the material you are going to use from the material manager and make it default. The material selected needs to have the method 'Thru-cut regmark' assigned to it. Check this by right clicking the material in the material manager tab.



If you are using a **custom** material click on the  to add a new method and select 'Thru-cut regmark' from the drop down list.

**NOTE:** Make sure that the other method(s) you are going to use are set up correctly.

- The tool you are going to use to 'Thru-cut' the media is also the one you want to have on default for 'Thru-cut regmark'.



Click the toolbox  to open the tool list. Click on the circle next to the tool name to make it default.



 EOT

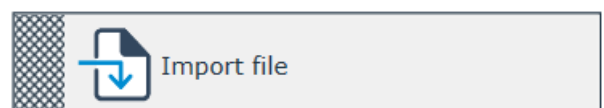


 EOT

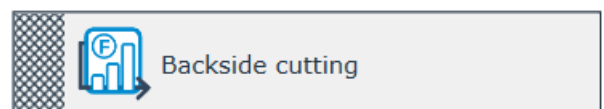
## Backside cutting

Follow these steps to initiate cutting from backside.

- Load the media you want to cut from the backside with the printout facing up and import the corresponding job.

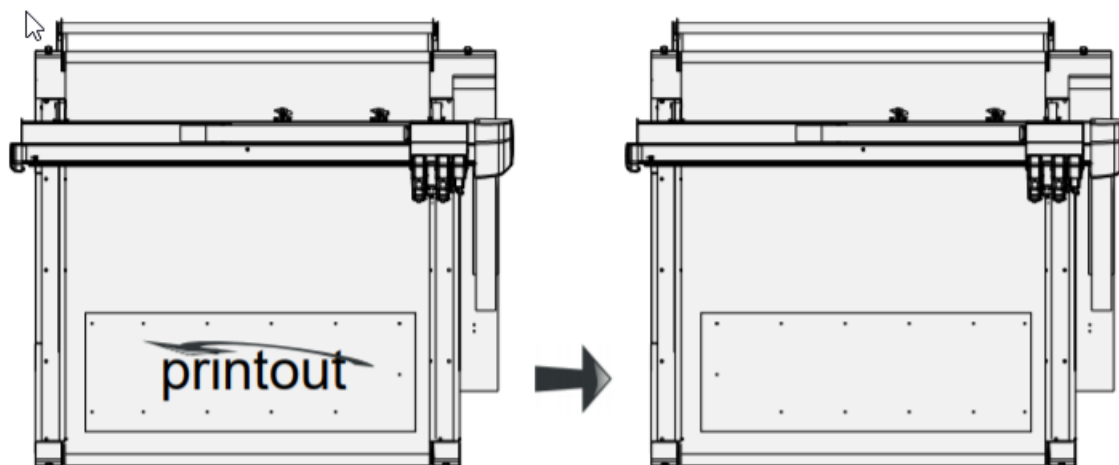


- With the file imported, assuming that it has been designed correctly, click on the action set 'Backside cutting'. This action set is in direct mode. This means that as soon you click it, the software will ask you to search the first regmark.



- Search the first regmark and press enter. The machine will start scanning all the marks and then cut out all the marks. When the machine is finished, remove all the cut out marks.

- Flip the media vertically with the printed side now facing down.



**NOTE:** Look closely at the markers. They should be considered as cut out and show how the orientation of the flipped sheet looks like.

- Press run and search for the first mark. After all the marks are read the machine will start cutting from the backside.
- Only 1 job/copy can be processed at a time. Repeat the whole process if you have multiple jobs/copies.