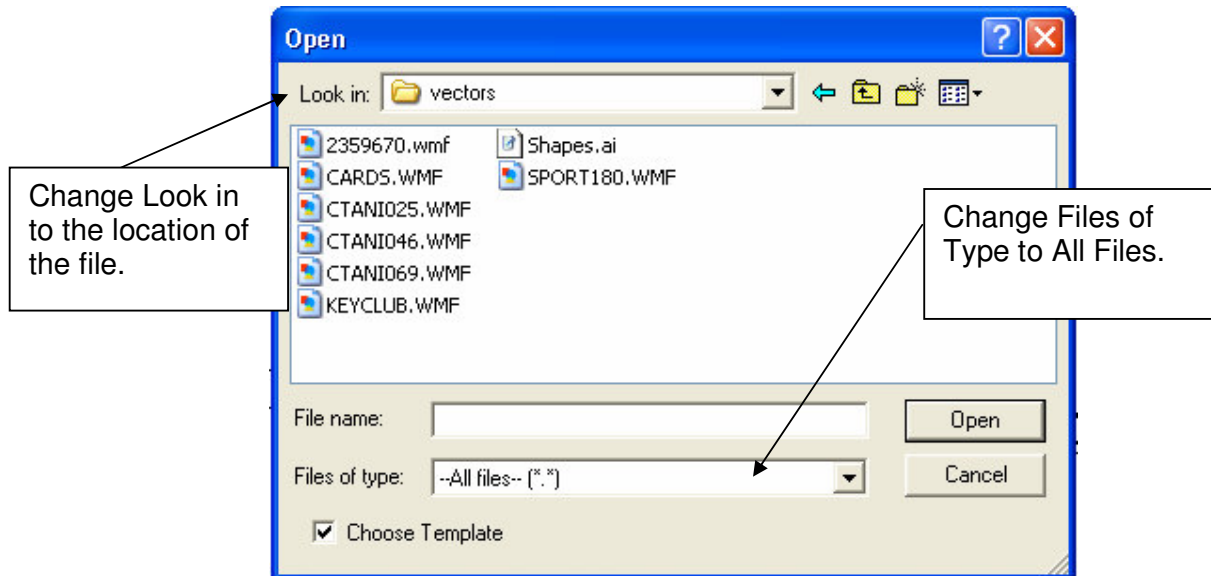


Cutting a Design from a vector file

1. Go to the **Design** menu – **Open**.



Double click onto the required file and the design will be loaded.

You will need to assign the required effects to each section by doing the following:

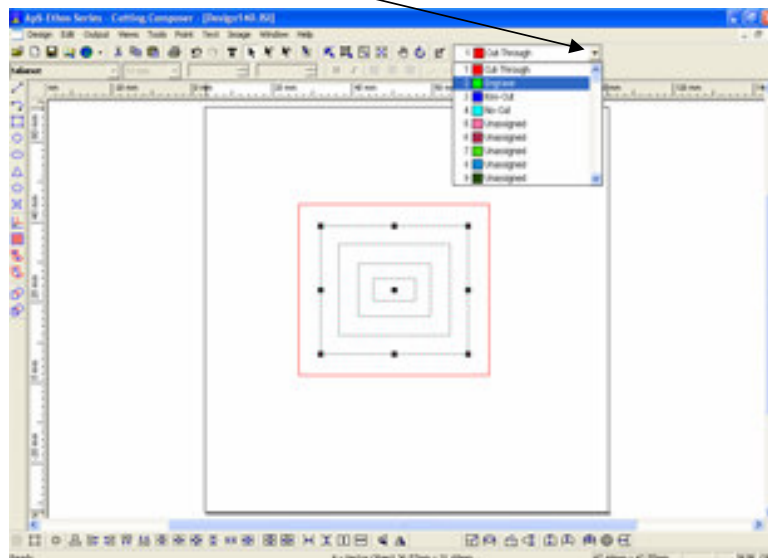
Either

Hold down the shift key on your keyboard then select each section.

Or

Drag a box around the sections you require.

1. When you have a section/s selected choose the required effect from the drop down list.



- Place the material in the machine and set the media area.

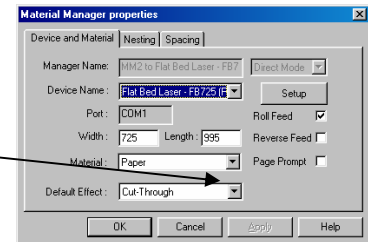
Setting the Media Area


Click the Media button on the machine controller and press enter. Move the cutting head using the arrow keys to the bottom left of the material, press enter. Move the cutting head to the top right of the material and press enter again.

- Make sure your machine is on-line by clicking the Hand button on the machine keypad.
- Go to the **Output** menu – **Material Manager – Delete.**
- Go to the **Output** menu – **Material Manager – Setup.**

- You now have one of two options.**


If your material already exists you can select it from the drop down list.

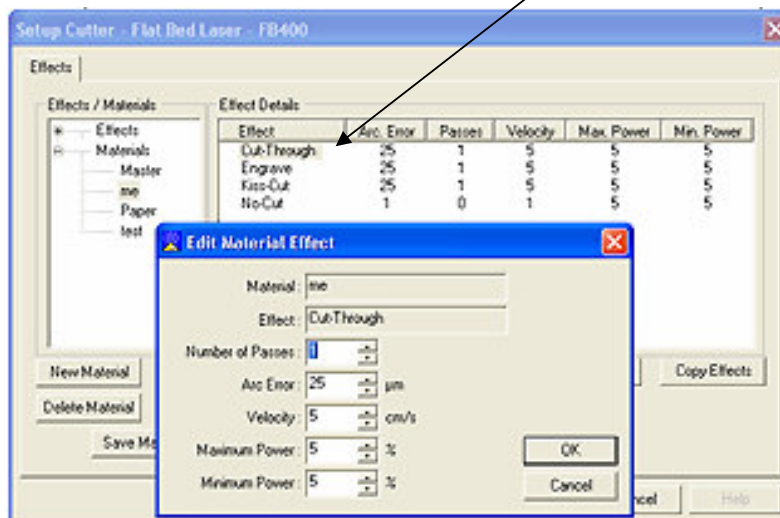


Select the **Output Design** button . Your machine will now cut the drawn shape.

Or

If you have a new material to set-up click the **Setup** button, then select the **Effects** Tab. And Click the **New Material** button. Enter the name of your new material. Select the **OK** button.

- Make sure your new material is selected and click the **OK** button on the Material Manager Properties form.
- Select the **Output Design** button . To change the power and speed settings for a new material go the **Selection Tab** and **Edit effects**. Double click onto the Effect you wish to change, i.e. Cut -Through and the Edit Material effect form will appear.



9. Change your power and speed settings and click the **OK** button on the first form, then the **OK** button on the last form and click the **Send to Cutter** button.
10. If you would like to save your design to the database go to the **Design** menu – **Save – Save as New design in Database** and **OK**.