

SummaFlex™
PRO

Rev 002

Revision history

Publication	version	
08-08-2017	Rev 001	First release
01-03-2018	Rev 002	Update to match latest version of SummaFlex pro (7.5.15)

SummaFlex Pro

1 New installation

SummaFlex Pro is software that integrates the flatbed into the workflow. It is the perfect link between the design station, RIP station, printers and cutting devices.

Once the workflow is set up, macros automate the process. Consequently, the operator's handling before starting the next job is reduced to a minimum as well as the downtime of the table.

To install it make sure it is in a directory where there are no other version of the installation program. Double click it to start the setup.

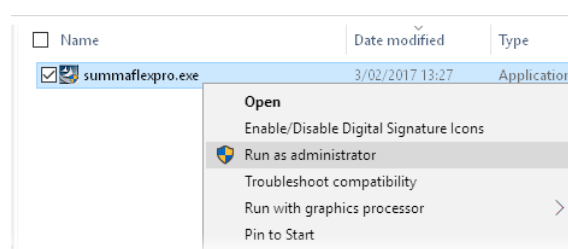
During installation, a license agreement will appear, read and accept it. A serial number will also have to be entered. This serial number is in the box of the USB security dongle.

The setup program itself decides whether the computer needs to be rebooted after installation or not. If the program prompts the user to reboot, then do so. Uncheck the checkbox before 'start SummaFlex Pro after installation'. Reboot the computer. Start the program only if the table is installed and connected (see further section 1.2)

There are a couple of known issues that prevent the program installing or starting up. Below is a list of those and the procedure to fix them.

1.1 General Windows's security issues.

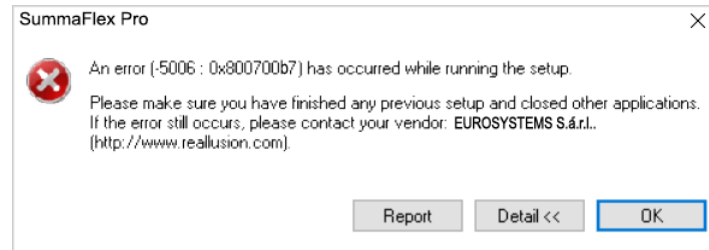
If the setup program reports that it does not have enough privileges to access or save to a certain location, then run the setup as administrator. Go to the folder where the installation program is. Right click on the setup program and click on 'Run as administrator'. It might also be necessary to disable the virus scanner temporarily.



This is in fact a general recommendation for most setup programs.



1.2 Unpacking problems.

If during the installation an error similar to the one in the figure below occurs, then it is because an error occurred during the unpacking of the installation files. In that case unpack the files before installing to do follow procedure below.



Place the program in a local folder on the computer.



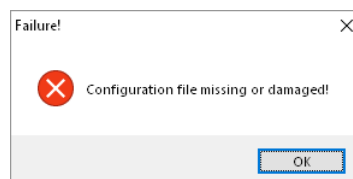
1. Open the command line window, to do so type  , then fill in cmd and click OK.
2. and click on OK.
3. Go to the folder where SummaFlex Pro .exe is located.
4. Type SummaFlexpro.exe -extract_all:"c:\SummaFlex Pro _Install", wait until it is finished.
5. Close the command window.
6. With Windows explorer go to C:\SummaFlex Pro _Install\Disk1 and double click on setup.exe.



NOTE: When using this procedure, make sure there is only one installation file for SummaFlex Pro in the folder and make sure the folder c:\SummaFlex Pro _Install does not yet exists.



1.3 FIPS policy problems

When an error like figure below in an environment with a high security setting in Windows, then it is possible that a system policy called FIPS has been activated on the system.



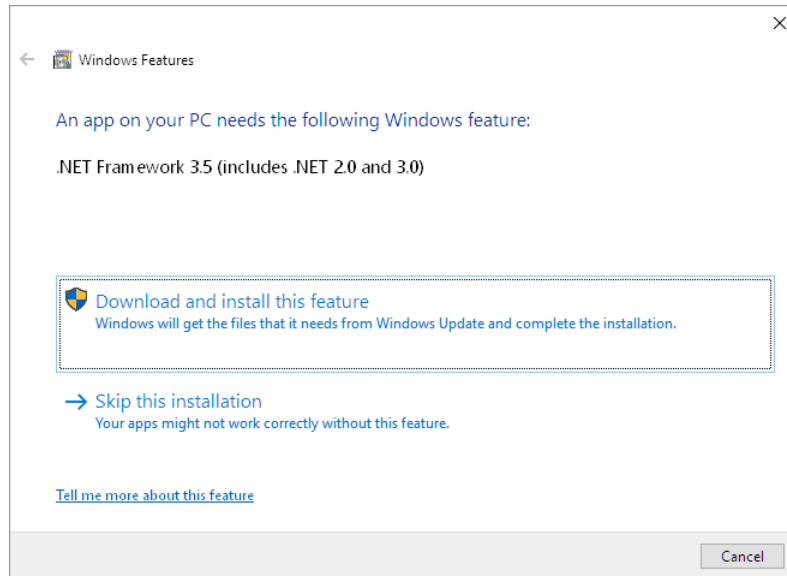
To solve the problem do following:



1. Open the registry editor, to do so type  , then fill in regedit and click OK.
2. Go to
HKEY_LOCAL_MACHINE\SYSTEM\CurrentControlSet\Control\Lsa\FipsAlgorithmPolicy\Enabled.
3. Double click it and change the value to 0
4. Restart computer.



1.4 .NET Framework error

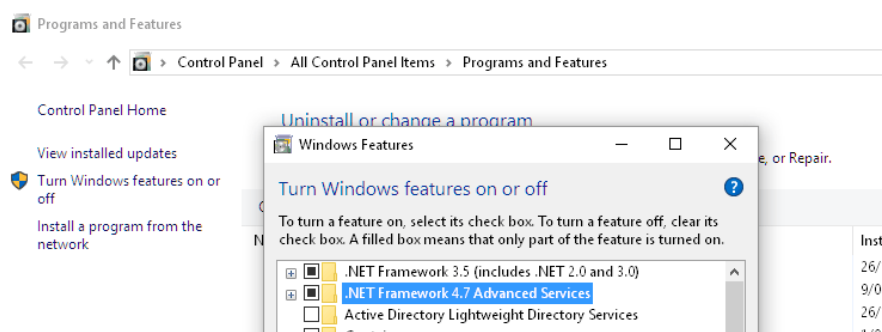
Normally the correct .NET framework is installed during the setup of SummaFlex Pro . It is possible that due to a Windows system configuration issue this fails. An error can then occur during startup of the program, or after a short time it has been running. (versions of .Net may be different)



First check if it is correct installed and enabled.



1. Open Application control panel, to do so type  , then fill in appwiz.cpl and click OK.
2. In the “Programs and Features” window, click on the link “Turn Windows features on or off”.
3. Check if the “.NET Framework 3.5 (includes .NET 2.0 and 3.0)” option is available in it.
4. If yes, then enable it and then click on “OK”.



If .NET is not installed, or this does not solve the problem then install .NET framework again. This can be done starting from the error message, or by using Windows update, or by going directly to the download site of .NET Framework.

If the installation fails and gives error 0xc8000222, then this means that the temporary folder of Windows Update is corrupt to solve this do following:

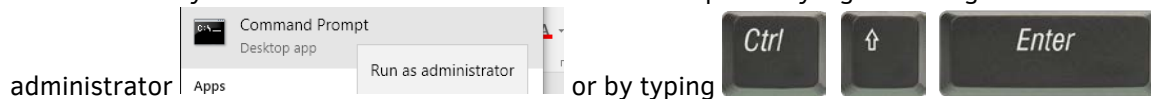
1. Open a command prompt in admin mode and type: net stop wuauserv



2. type `%windir%`, then fill in: `%windir%` and press OK.
3. In the opened folder, rename the SoftwareDistribution folder to SDold.
4. Open a command prompt in admin mode and type: net stop wuauserv
5. install .NET Framework again.

There are several way to open the command line mode in Admin mode.

The easiest way is to search for 'Cmd' and when found open it by right clicking and choose run as administrator

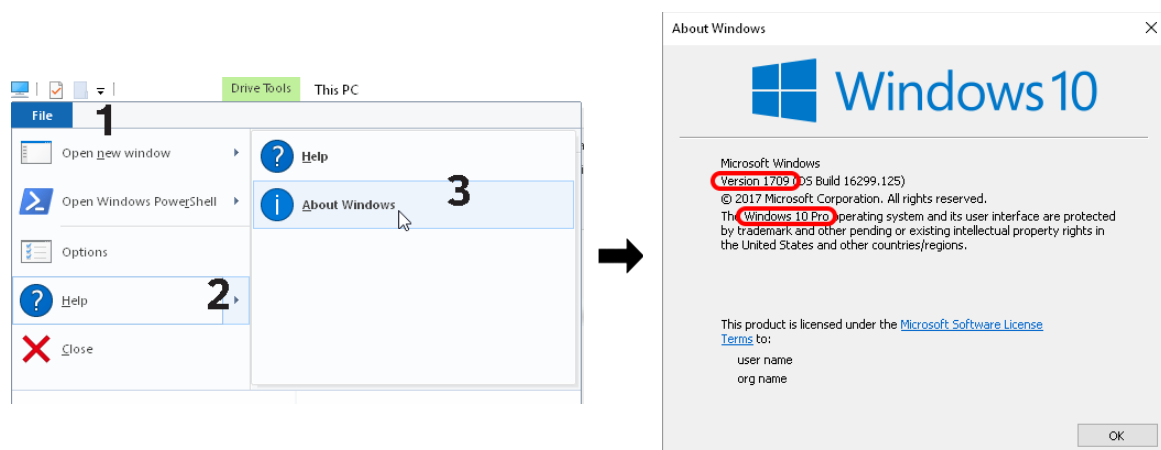


1.5 Windows N or Windows KN versions

This applies only to Windows installation in Europe and South Korea. These editions include all the base features of the operating system but without **Windows** Media Player and related technologies pre-installed.

However this is necessary for processing the camera data. If there are problems with the camera check the Windows edition and version.

Open windows explorer go to File -> Help and click on About Windows.



If Windows is an N or NK edition, then download the correct media pack from <https://support.microsoft.com/en-us/help/3145500/media-feature-pack-list-for-windows-n-editions>.

Make sure to check whether Windows is a 32 or 64 bit installation. After downloading install the pack.

2 First start up and procedure to check connections problems (if any)

Connect first the USB security dongle, the wireless sensor and the table (it is assumed that the USB drivers for cutter and camera are already installed).

Start Axis Control.

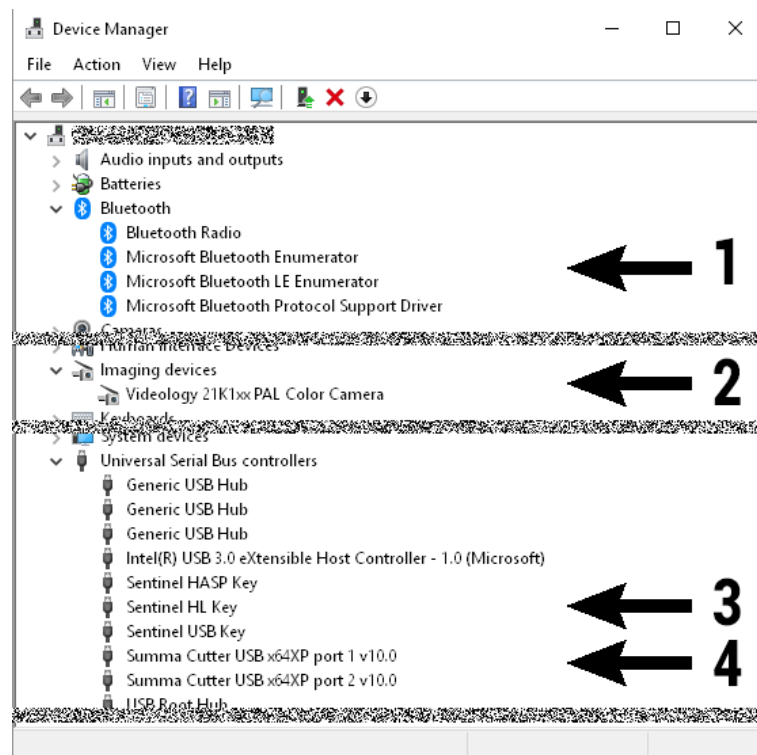
Switch on the cutter.

Load media (black vinyl with white backing preferred) and install tool.

If there are communication problems, then the device manager can be used to check if the drivers are correctly loaded.



To open the device manager type  , then fill in devmgmt.msc and click OK.



DEVICE MANAGER

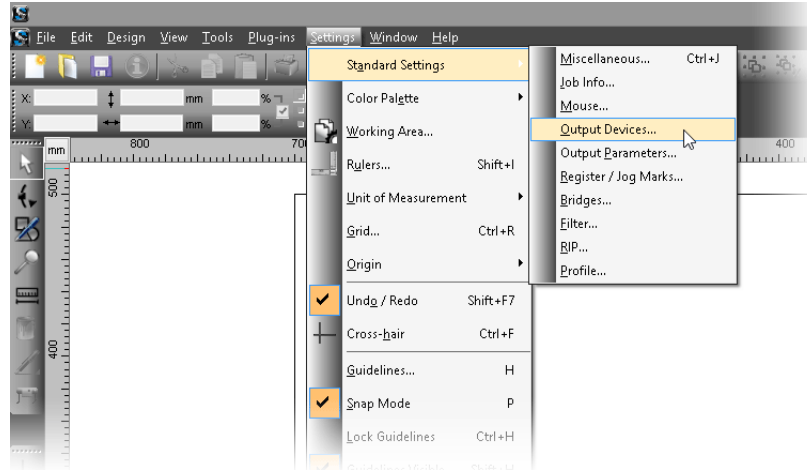
Four devices are installed. Each device should be visible in the device manager and there should be no warning or error marks in the icons.

1. Bluetooth adapter (is for the wireless sensor bar).
2. Camera device in central unit on flatbed (may be another number, but is a Videology camera).
3. Security key for SummaFlex Pro ("USB entries)
4. Flatbed cutter (USB 1 is for sending cut data, USB 2 is used for Axis Control).

If there are other similar devices already installed on the computer, then they can be made distinguishable by un-plugging and re-plugging whilst monitoring the changes in the device manager.

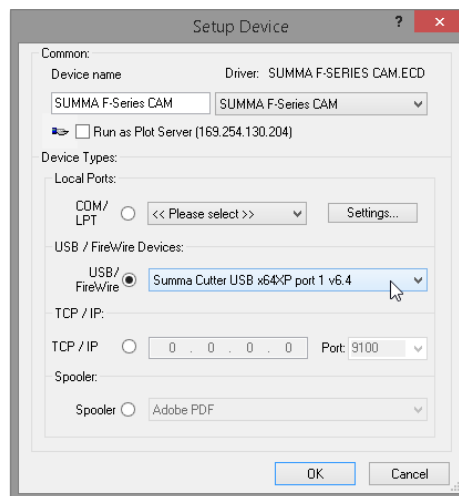
3 Configuring output device

1. Start SummaFlex Pro .
2. Go to Setting -> Standard Settings -> Output Devices.



SETTING UP FLATBED CUTTER

3. Select the correct driver in the dropdown box under 'Driver:'. Click on the radio button after USB and select then the correct USB port (Summa Cutter USB port 1). Click on OK.



SETTING UP FLATBED CUTTER DETAILS

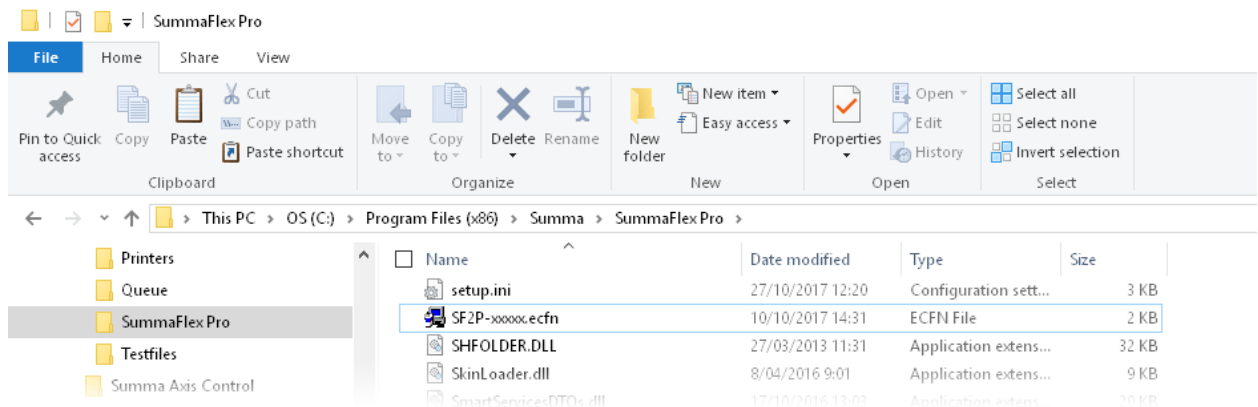
4. After that, a Window appears with the preferences for the Flatbed cutter. It is recommended to leave the settings as they are. They can always be changed at a later date or in the output window when a job is sent.



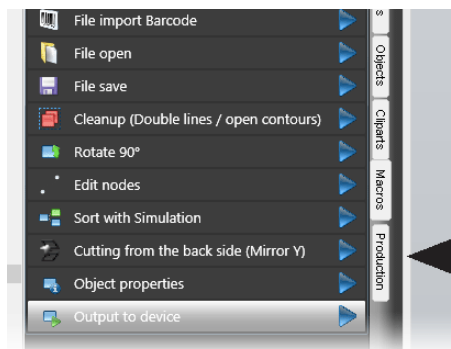
NOTE: Close and open SummaFlex Pro after the installation of the output device. If the layers are pre-defined for that output device, then they will be set correct after that SummaFlex Pro is restarted.

4 Barcode option

If the barcode flow option is available (part# 500-9503) then an extra license has to be installed. This is best done after the installation of the driver and before SummaFlex Pro is started up again. The barcode option can be activated by a file. This file has to be copied in the SummaFlex Pro directory. When SummaFlex Pro is started up, then the license is automatically installed. The name of the license file looks like this: SF2P-xxxxx.ecfn. Where xxxxx is the same number that is on the hardware dongle of SummaFlex Pro.



If the license file is correct installed, then an extra macro tab (called production) will be added to the macro tabs visible on the right of the SummaFlex Pro window. Further barcode workflow specific settings are described in the user manual for the F series.



5 Update SummaFlex Pro

If a new version of SummaFlex Pro or a new driver is available, then the old version can be updated, or a new installation can be done. The different possibilities are described in the sections below. Usually the way to update an existing version is to run the installer with the modify option. This will just update program files and no setting will be changed.

Even the driver will stay on the old version, If the driver has to be updated, then refer to section 1.5.4

5.1 Making a backup of a previous installation

Making a backup of an installation before an upgrade or a clean install is always recommended. Take a copy of the directory where SummaFlex Pro is installed, before it is uninstalled or updated. This directory is located in the programs directory “C:\Program Files (x86)\Summa” for windows 64bit or “C:\Program Files\Summa” for windows 32 bit.

However it is recommended to compress that directory and store the compressed file before uninstalling or upgrading in order not to mix files, from different installations, by accident.

If no backup is taken, then save at least the directories mentioned in section 1.5.5

Do not alter anything in this directory manually before updating or uninstalling, otherwise the installation can have strange unexpected settings.

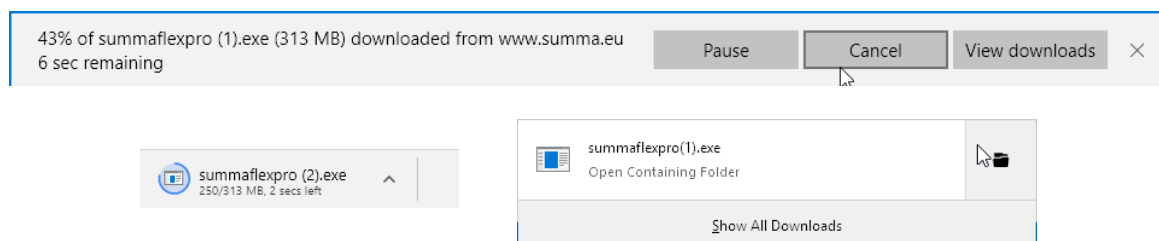
5.2 Update SummaFlex Pro

An update does not change any settings from previous versions apart from the palettes. The update procedure overwrites the palette, if the old palette must be saved, then save the normally used palette under a different name (or copy it from the backup that was made). The palette that is normally used is called the default palette. Just save this palette in the palette directory, it will not be overwritten by an upgrade if it has another name than default.pal. The choice to use the old palette or not can then be made at a later date.

An update usually comes from a download. If a new version of SummaFlex Pro is downloaded, then make sure it is downloaded in a directory where no other copies of the setup programs are already stored. Otherwise Windows will change the name of the new downloaded file to SummaFlex pro(x).exe. Where x is a number. Even when program summaflexpro(x).exe is started, Windows will still install the file summaflexpro.exe instead of SummaFlex pro(x).exe.

Check during download how the downloaded file will be saved, if it is of the type SummaFlex pro(x).exe, then stop the download delete all files that begin with SummaFlex from the download directory, or download to another directory.

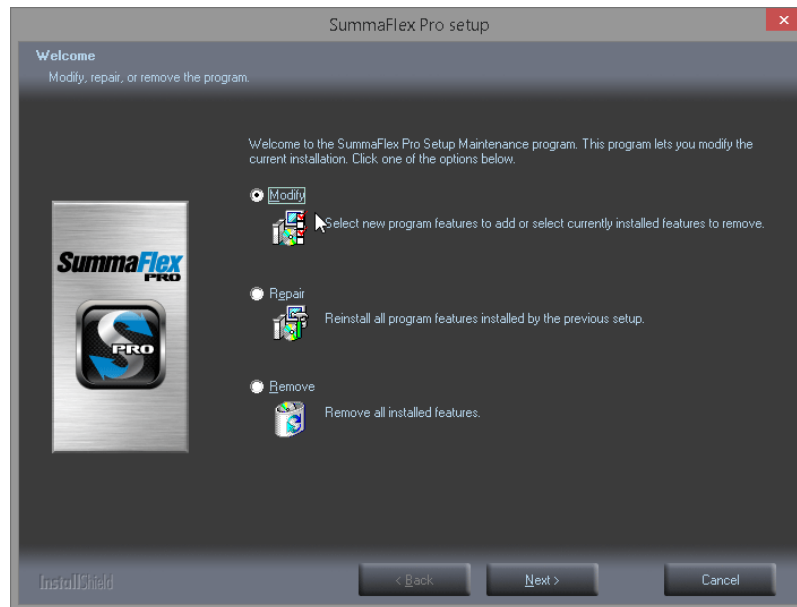
Below pictures form downloads that can result in a bad update.



BAD FILENAMES

Run the downloaded setup of SummaFlex Pro. A Window will open, click on the radio button next to Modify or Repair and click on next. Go to the rest of the setup program without changing anything if prompted.

If the Modify option is chosen, then an extra window is shown with the option to leave certain parts of the program unchanged. However it is not recommended to change any of the settings in this extra window unless advised by a Summa technician.



UPDATING SUMMAFLEX PRO



NOTE: If SummaFlex Pro is upgraded like this, then the new drivers are copied into the SummaFlex Pro directory, however they are not installed immediately. The installation of the drivers is explained in section 1.5.5.

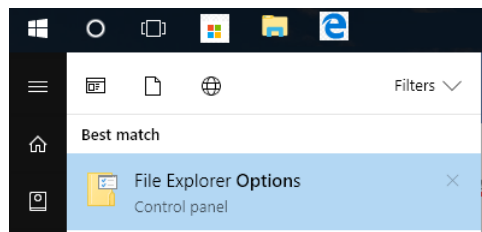
5.3 Clean installation of SummaFlex Pro

Sometimes it is recommended to do a clean (fresh) installation instead of an upgrade. Follow procedure below to do a clean installation.

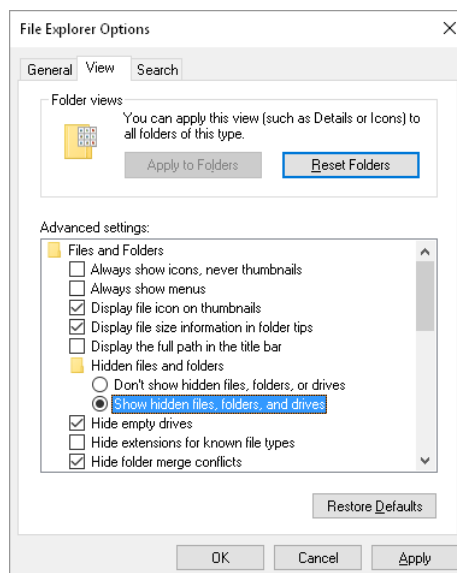


NOTE: If a clean install is preformed, then all material settings (presets for tools) and palettes are lost and need to be configured again or recovered from a backup.

With a clean install, the user will have to fill in the serial number again and re-install the barcode option if it was available. A copy of the license file (ecfn file) and the serial number can be found in the program data directory. Each day SummaFlex Pro is started and closed, a copy of the eurocut.ini, filter.ini and plotman.ini. A copy of the license file (SF2P-xxxxx.ecfn) is also saved on the day the barcode option was installed. This directory is standard hidden by Windows. To make hidden files and directories visible in Windows do following:
Search for “folder options” Open it.



Click on the view tab and click on the radio button just in front of “Show hidden files, Folders and drives”





Open Windows explorer and go to C:\ProgramData\EUROSYSTEMS\SummaFlex Pro 2017. Search there for eurocut.ini, open it with a text editor and search for the word “code”. Next to it is the serial number needed to install SummaFlex.

In the same directory a copy of the SF2P-xxxxx.ecfn file can also be found.

This serial number and the ecfn file will be needed for the clean installation.

Procedure for clean install:



1. Uninstall the program SummaFlex Pro. To do this type  , then fill in appwiz.cpl and click OK. Wait for the list to build.
2. Click right on SummaFlex Pro and choose to uninstall. Wait until this is done.
3. Delete the SummaFlex Pro directory (can be found in the programs directory "C:\Program Files (x86)\Summa" or "C:\Program Files\Summa").
4. Install the program again. After that Following things will have to be redone: select correct output device (see section Configuring output device 2.7.2) the camera will have to be calibrated again and the marker size will have to be set again. And the layer setup will have to be done again. These procedures are described in the user manual.



NOTE: There exist some procedures to recover custom settings from earlier installations. If a backup was taken before uninstalling the program, then all the necessary files can be extracted from the compressed file. See section 0.

5.4 Installing driver

This procedure can be followed **after an upgrade up SummaFlex Pro** or when **a separate driver file has been released**. When SummaFlex Pro is upgraded a new driver file (SUMMA F-SERIES CAM.ECD) is placed in the directory `.\Summa\SummaFlex Pro \cutter\defaultdrv\`.

If a new separate driver file has been released, then it is recommended to save this file also in this directory.

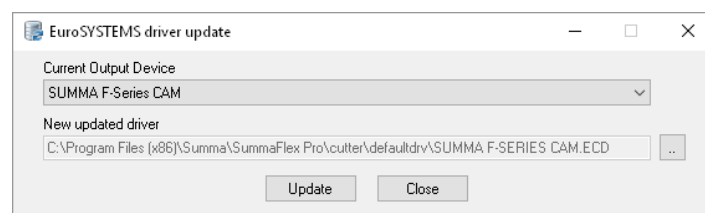
There are two procedures to install a new driver.

Procedure 1 replace old driver

The simplest procedure is to just copy the file direct in the driver directory. In this case all settings (like OPOS calibration) and material setting (preset values for each tool) are lost. This procedure is only used when the old driver file has become corrupt. With Windows explorer navigate to the folder `C: ..\Summa\SummaFlex Pro \cutter\defaultdrv\`. Select the file SUMMA F-SERIES CAM.ECD and copy it to the folder below (`.\Summa\SummaFlex Pro \cutter\`).

Procedure 2 update old driver (update driver and install new tools).

This procedure makes use of a program to merge the new driver file into the old one. This program is located in `C:\Program Files (x86) \Summa\SummaFlex Pro \Tools\` Double click on DrvUpd.exe.



UPDATING DRIVER SUMMAFLEX PRO

Heck the file names, they should be correct if only one driver is installed in SummaFlex The rest is automatically filled in. Click on Update.

5.5 Recovering custom settings from previous installation

It is important to know where the most important custom settings are saved in SummaFlex Pro .

- The files DEFAULT.pal and Cutter_All.pal in the folder C:\Program Files (x86)\Summa\SummaFlex Pro \Pal are used to store the layer names and the links between the tools and the layer names. DEFAULT.pal is the standard palette, Cutter_All is used when using Twin workflow.
- The file SUMMA F-SERIES CAM.ECD in the folder C:\Program Files (x86)\Summa\SummaFlex Pro \Cutter is used to store the print and cut offset and the custom settings for the different tools (basic material library).
- The folder C:\Program Files (x86)\Summa\SummaFlex Pro \Cutter\img holds all the camera profile files for the normal workflow (files with ipp extension).
- The folder C:\Program Files (x86)\Summa\SummaFlex Pro \ ProductionManager\Imaging holds all the camera profile files for the barcode workflow (files with xmlt extension).
- The folder C:\Program Files (x86)\Summa\SummaFlex Pro\ProductionManager holds all the profiles for the Barcode workflow
- The file eurocut.ini in C:\Program Files [(x86)]\Summa\SummaFlex Pro can be used to retrieve the serial number of the dongle (daily copy in C:\ProgramData\EUROSYSTEMS).

All these files can be found in the compressed file with the backup of the previous installation. If no backup is made, then at least copy those files to a separate folder so they can be used if necessary. Depending on the kind of update/clean install the custom settings from the previous installation can be recovered by following procedure below.

- **PALETTE:**

The previous palette can be used again if the file DEFAULT.PAL from the previous installation is copied over the new DEFAULT.PAL file in the folder C:\Program Files[(x86)]\Summa\SummaFlex Pro \Pal or with a clean install.



NOTE: If the new version of SummaFlex Pro introduces no new tools, then it is recommended to do so.

If it does, then rename the new DEFAULT.PAL to DEFAULTNEW.PAL. Then copy the previous DEFAULT PAL to the palette directory and use the DEFAULTNEW.PAL as reference to insert the new layers in the default palette that was overwritten.

- **MATERIAL LIBRARY:**

If a material library has been built in a previous version and this data has to be saved then copy the file SUMMA F-SERIES CAM.ECD from the backup to the folder C:\Program Files [(x86)]\Summa\SummaFlex Pro \Cutter then update the driver as described in the procedure 2 described in the previous section.

- *PROFILES:*

Copy the ipp files from the backup to the C:\Program Files [(x86)]\Summa\SummaFlex Pro \Cutter\img directory



NOTE: It might be useful to get a backup of the new ipp profiles before overwriting them with the old ones.

Copy the xmlt files from the backup to the C:\Program Files (x86) \Summa\SummaFlex Pro \ProductionManager\Imaging directory



NOTE: The new installation keeps automatically a copy of the default profiles for barcode workflow in another directory.

- *BARCODE WORKFLOW FILES:*

Do not copy the old barcode profile files from a backup to a new installation when an upgrade has been done (from either program or driver). It could be that new parameters were introduced and if the old profile would be copied, then the value of these new parameters is not set correct. However it is possible to copy profiles from another installation on a different computer if program version and driver version are the same.