

Printer USB Configuration

Introduction

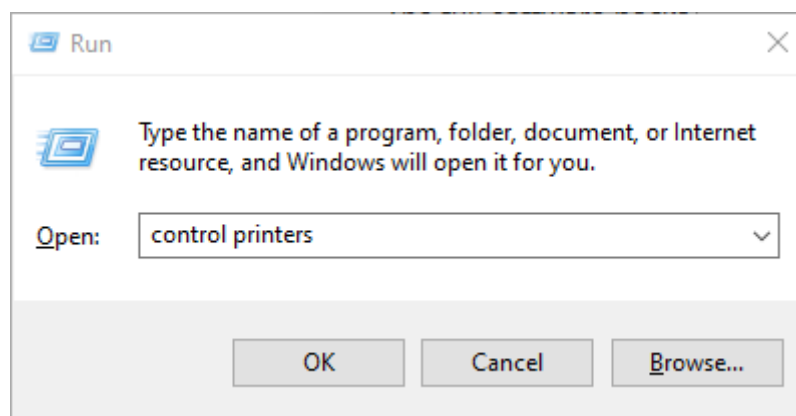
This procedure describes how to configure a cutter and a Windows computer to use a printer driver to be able to use a program not being able to drive the USB interface of the cutter directly.

Configure the cutter

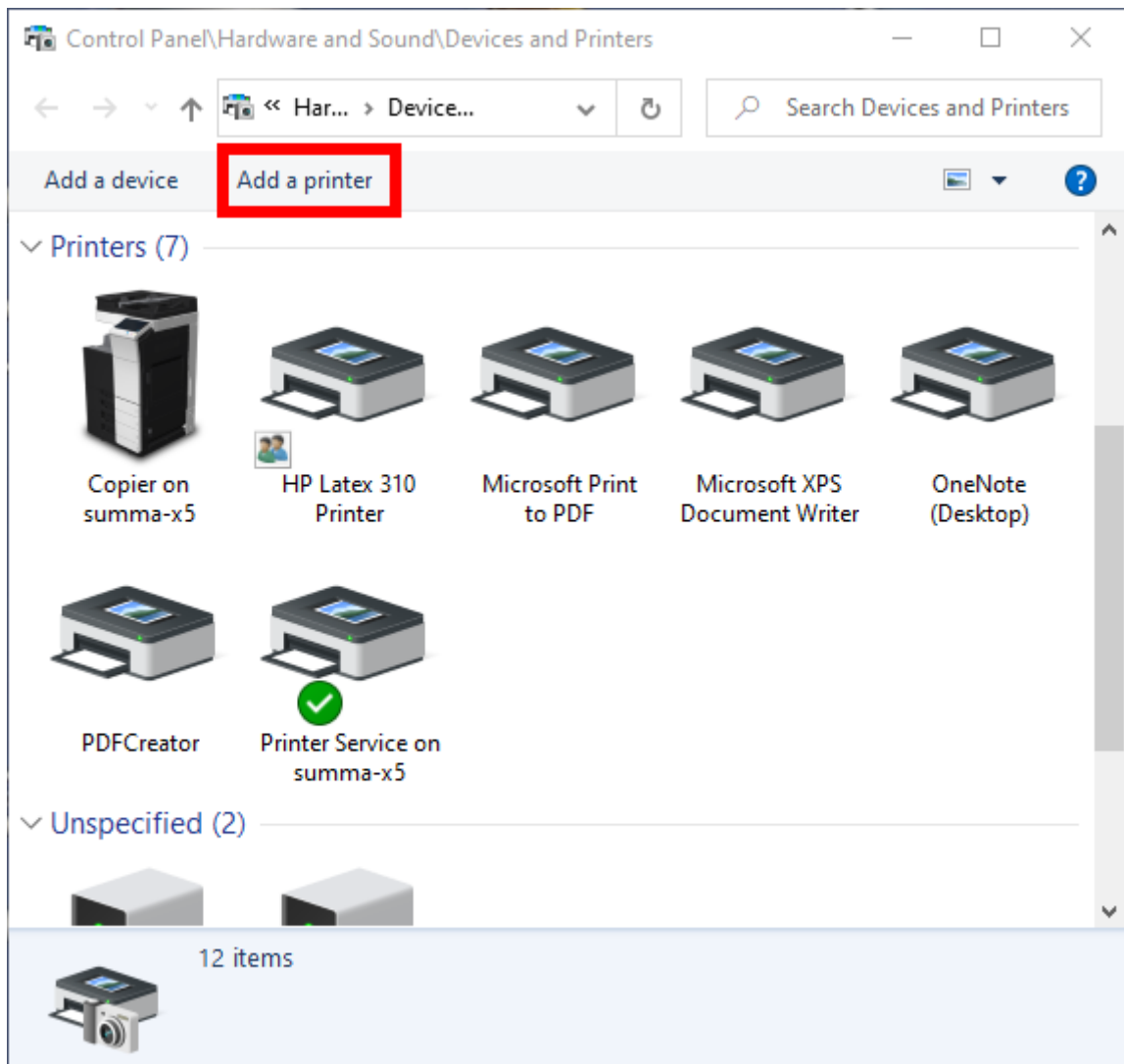
1. Disconnect the cutter from the computer.
2. Start the cutter.
3. Set the USB Class of the Summa cutter to Printer Uni.
4. Switch off the Summa cutter. This is necessary for the change to take effect.
5. Connect the Summa cutter with the computer using an USB cable.

Install printer driver

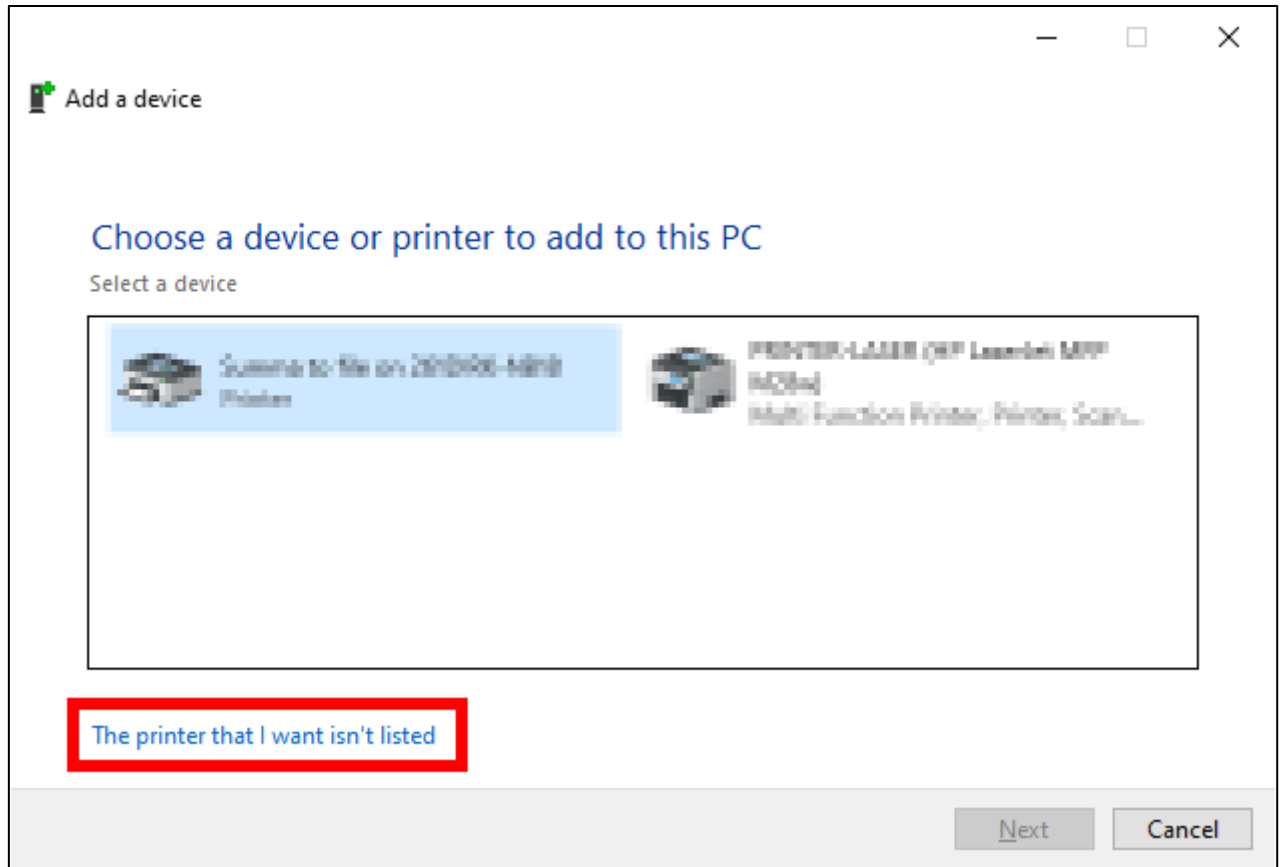
1. Switch on the Summa cutter.
The computer may find new hardware. In this case, click on **Don't show this message again for this device**.
2. You will now need to add a printer.
Click on the Windows Key + R, then fill in "control printers" and click [OK].



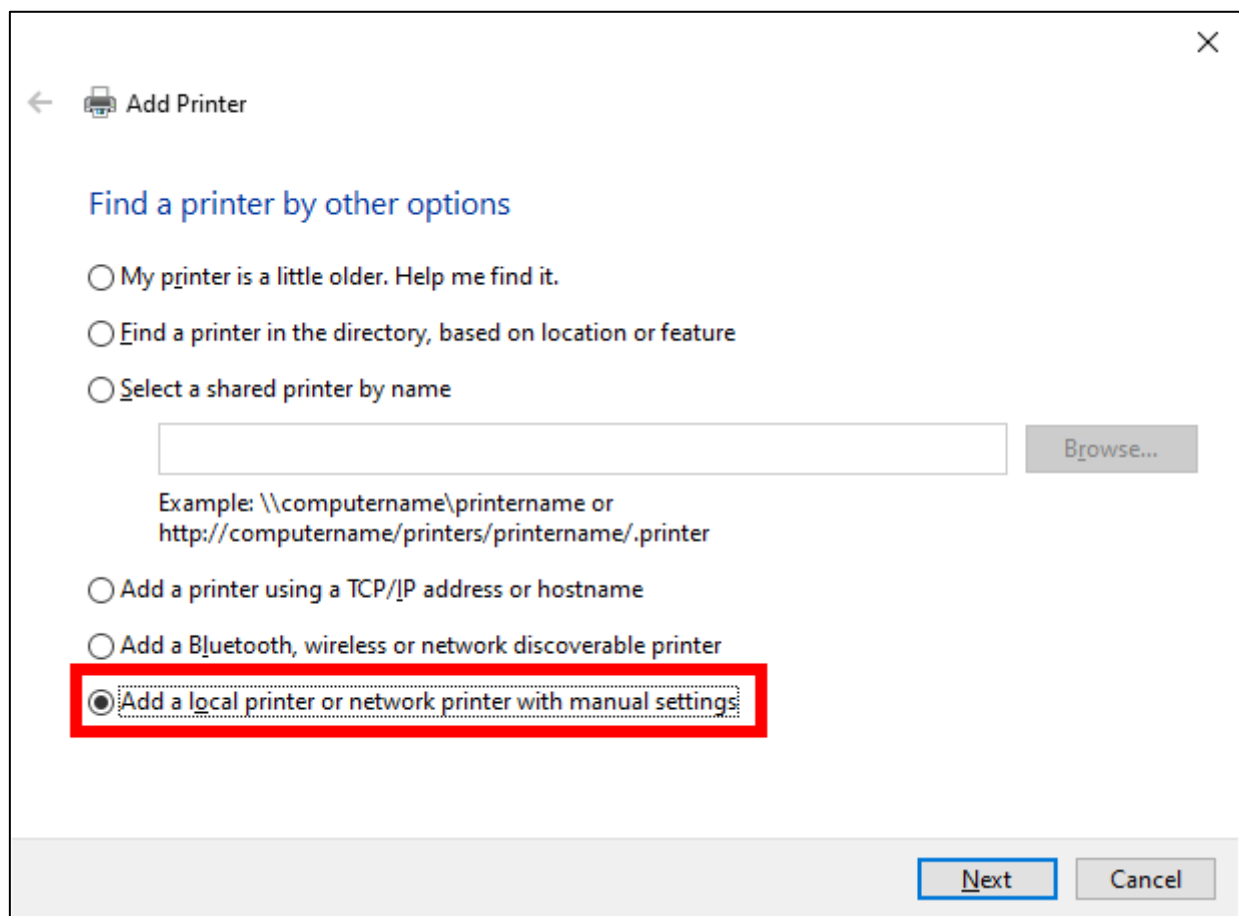
3. In the following dialog box, click on **Add a printer**.




4. Click on **The printer that I want isn't listed.**



5. In the next dialog box, select the option **Add a local printer or network printer with manual settings**. Click on [Next].



←  Add Printer

Find a printer by other options

☐ My printer is a little older. Help me find it.

☐ Find a printer in the directory, based on location or feature

☐ Select a shared printer by name

Browse...

Example: \\computername\printername or
http://computername/printers/printername/.printer

☐ Add a printer using a TCP/IP address or hostname

☐ Add a Bluetooth, wireless or network discoverable printer

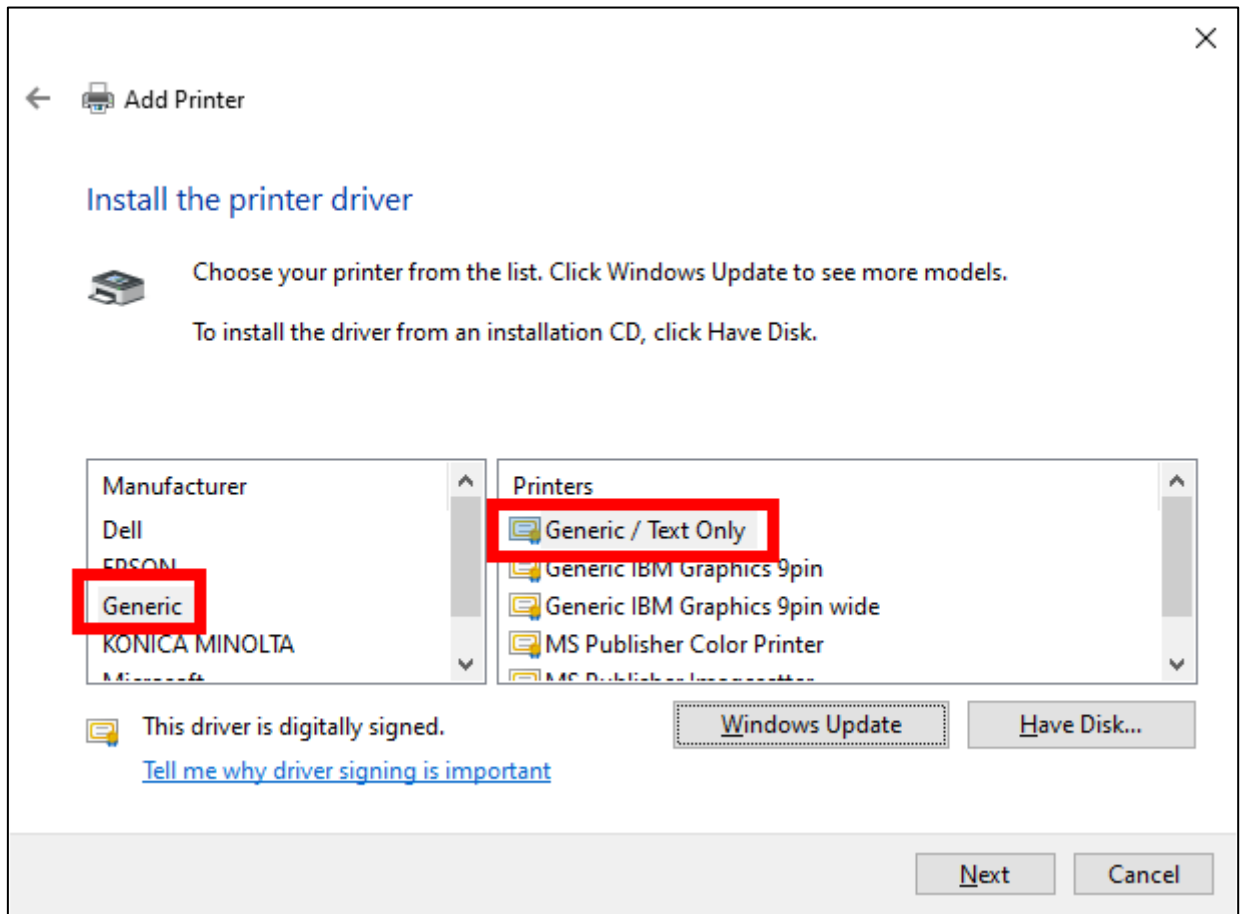
☒ Add a local printer or network printer with manual settings

Next Cancel

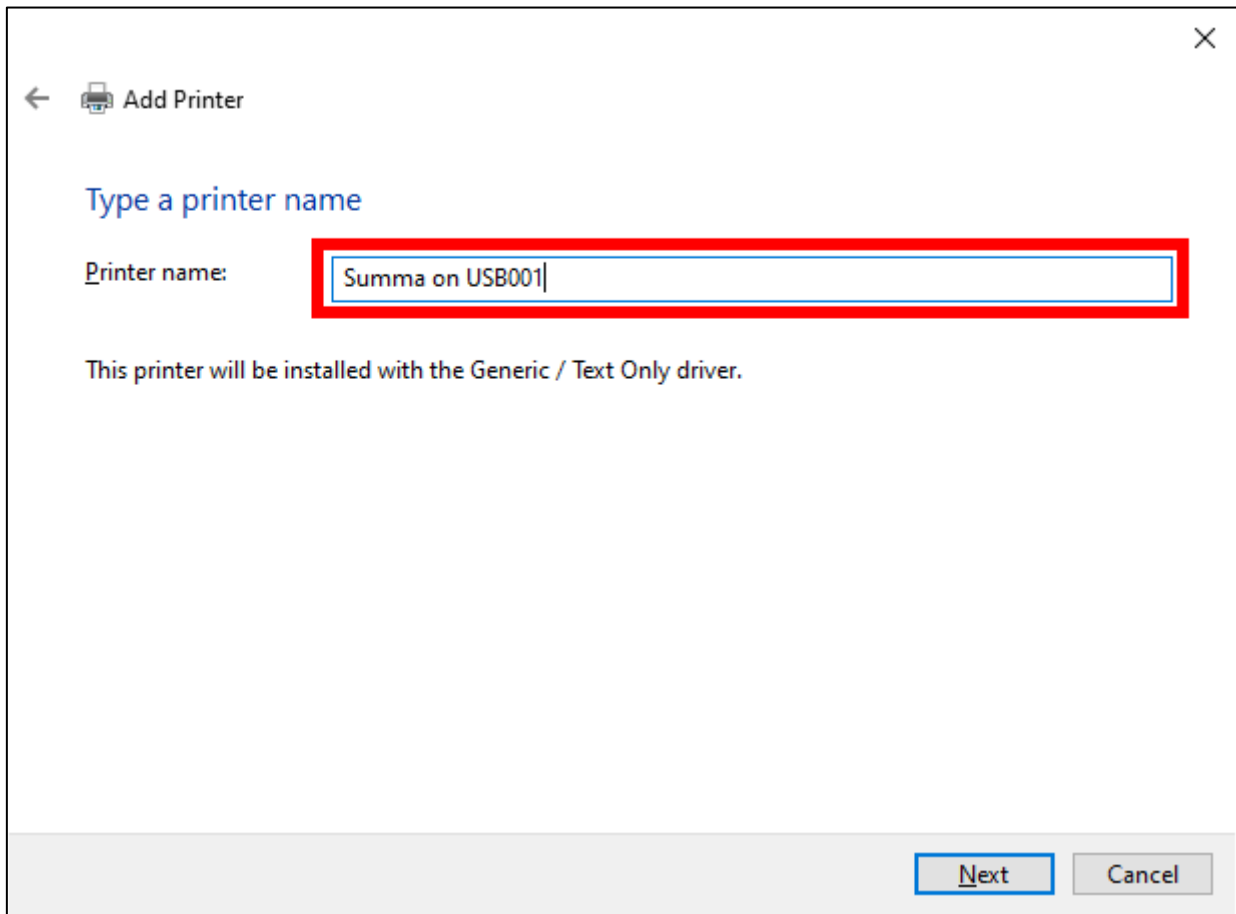
6. From the now appearing dialog box to select the printer port, select the newly created port for the Summa cutter: **USB001 (Virtual printer port for USB)**. Click [Next] to continue.

The screenshot shows a Windows-style dialog box titled "Add Printer". It has a back arrow icon and a printer icon. The main heading is "Choose a printer port". Below this is a descriptive sentence: "A printer port is a type of connection that allows your computer to exchange information with a printer." There are two radio button options: "Use an existing port:" (which is selected) and "Create a new port:". The "Use an existing port:" option has a dropdown menu showing "USB001 (Virtual printer port for USB)". The "Create a new port:" option has a "Type of port:" label and a dropdown menu showing "Hot Folder". At the bottom right, there are two buttons: "Next" (highlighted with a blue border) and "Cancel".

7. In the next step the driver needs to be defined. Select **Generic** in the first column (Manufacturer) and **Generic / Text Only** in the second column (Printers). Click [Next] to continue.



8. The next dialog box gives you the option to rename the default name used by Windows. In this example, the printer driver was given the name **Summa on USB001**. Click [Next] to continue.



← Add Printer

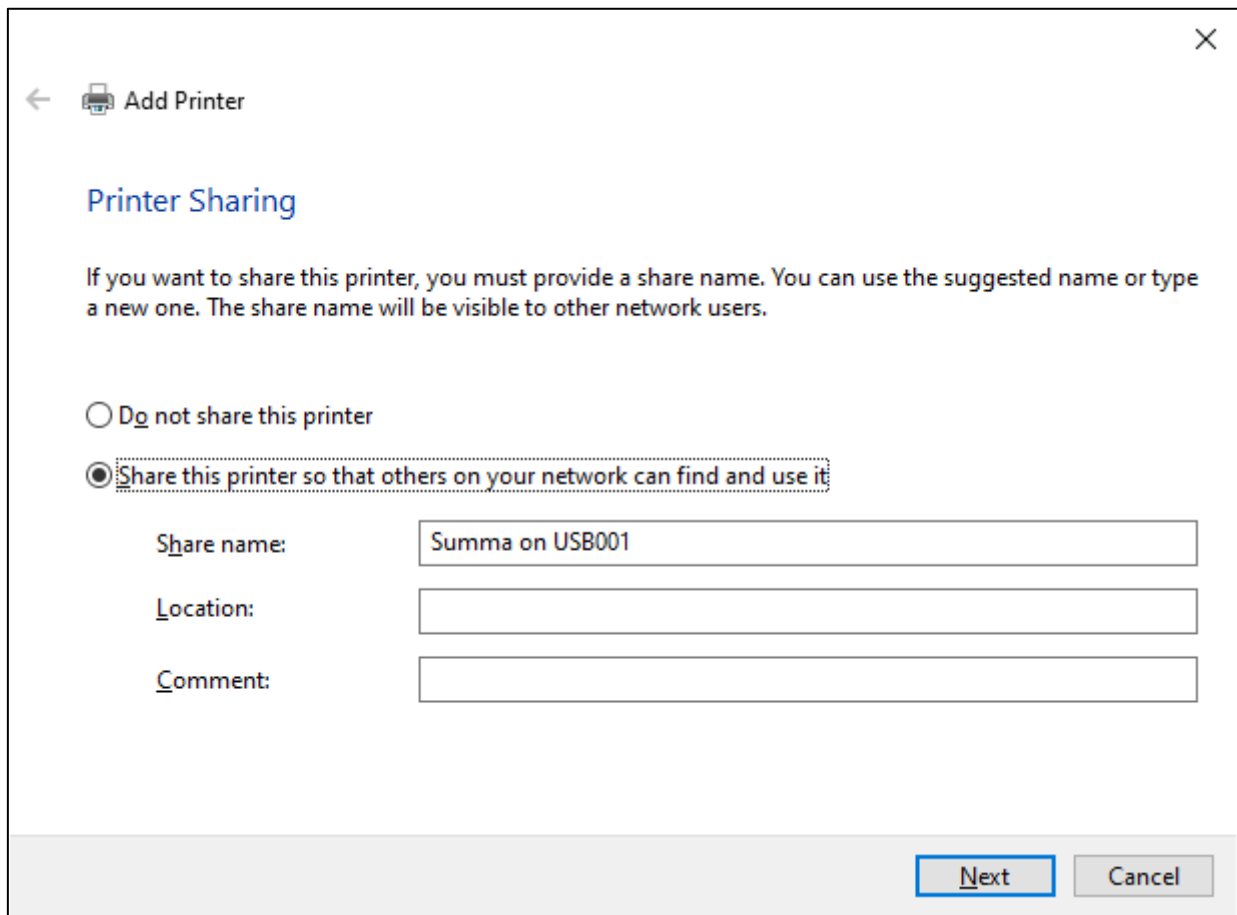
Type a printer name


Printer name: Summa on USB001

This printer will be installed with the Generic / Text Only driver.

Next Cancel

9. Optionally, in case the cutter has to be driven from other computers too, select the option to share the printer on the network. Click [Next] to continue.



←  Add Printer

Printer Sharing

If you want to share this printer, you must provide a share name. You can use the suggested name or type a new one. The share name will be visible to other network users.

☐ Do not share this printer

☒ Share this printer so that others on your network can find and use it

Share name:

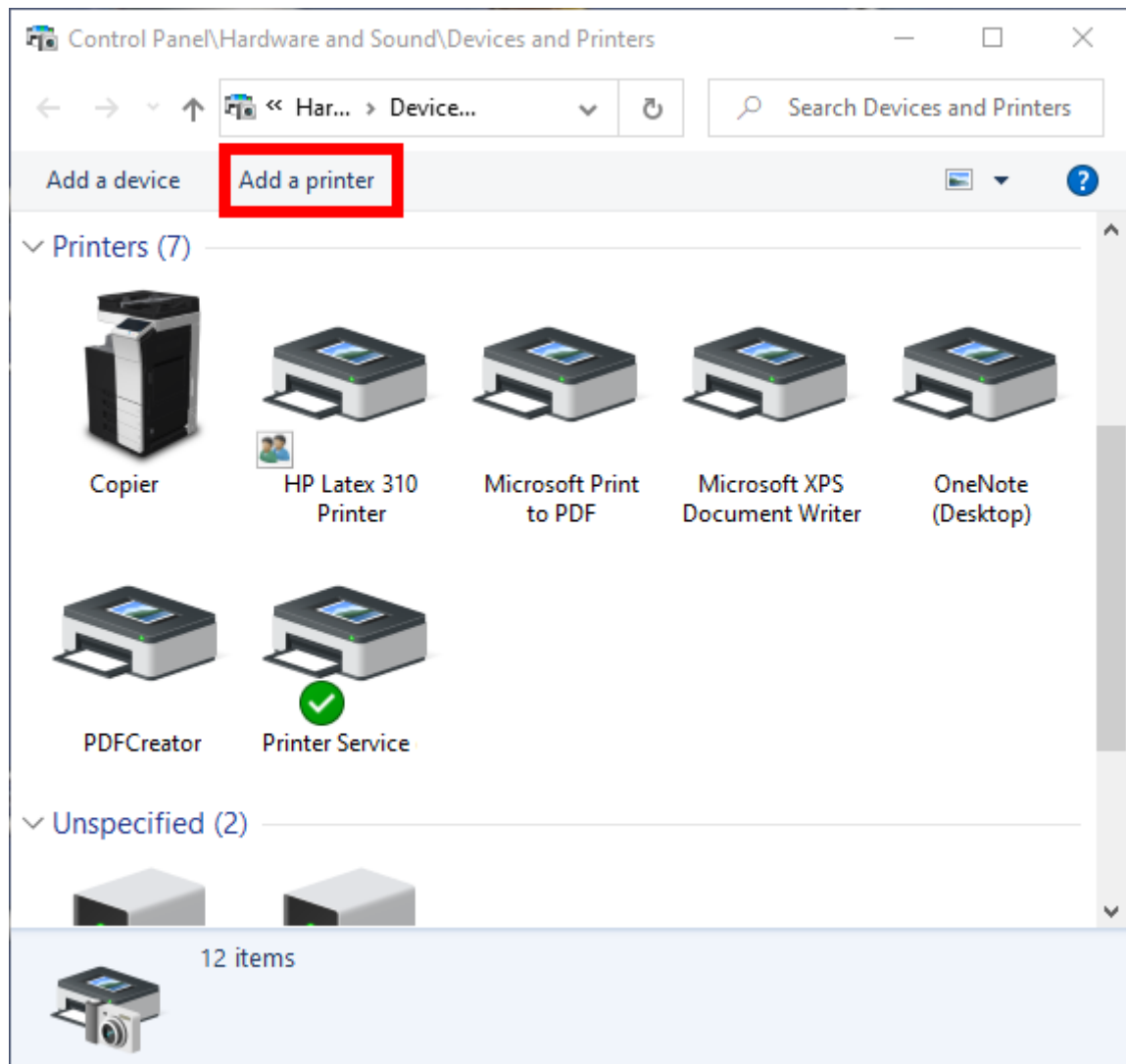
Location:

Comment:

Next Cancel

10. Finally click **Finish** to finalize the driver configuration.

Once finished, you will see a new printer is added. This printer can then be used to configure the application to drive the cutter using the printer driver.



Revised August 18, 2020