

## Firmware upgrade on SummaCut R

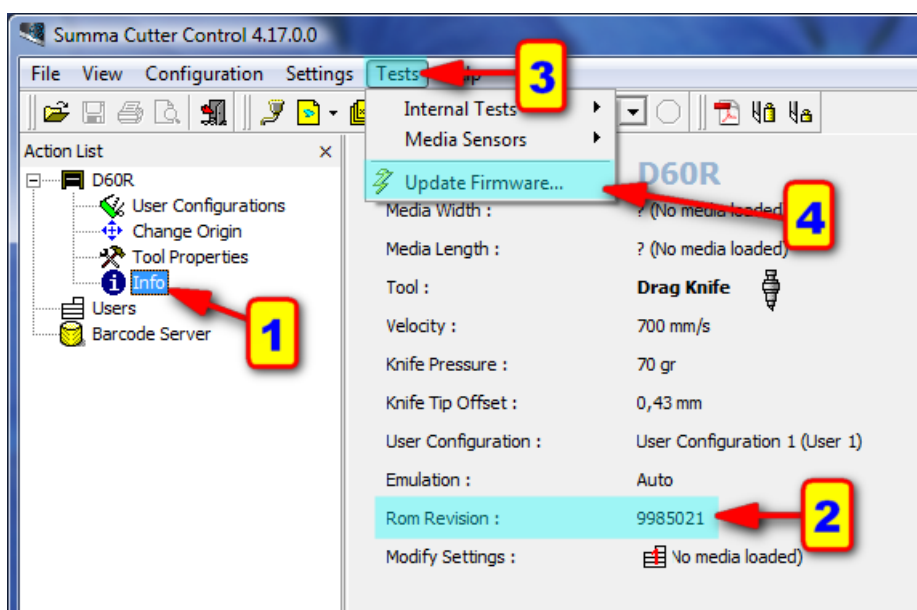
This procedure describes how to upgrade the firmware on a SummaCut series cutter.

It is recommended to remove the media completely from the machine.

Turn the cutter off and then on again. This is to clear the internal buffers and memory for the new firmware.

### Firmware Version Check


Check the current firmware version with Summa Cutter Control. Clicking on Info (1) will read some information from the cutter and displays the Rom Revision (2).



In case the ROM Revision is lower than 9985030, it is advised to be upgraded in order to be able to use the latest features available.

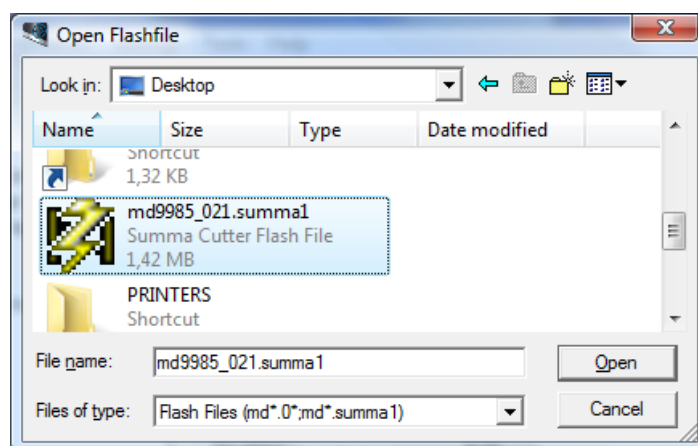
## Firmware Download

The firmware is available for download from the support page of the Summa website:

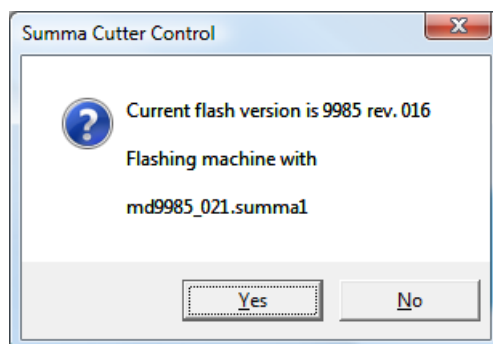
 <b>SummaCut D60R(FX), D120R, D140R(FX), D140RL(FX), D160R and D160RL Firmware, MD9985</b>	<p>The latest internal programming for current model SummaCut plotters.</p> <p><b>NOTE:</b> This firmware upgrade MD9985 is available for SummaCut cutters with serial numbers above xx0608-xxxxx or for cutters which already have a firmware starting with MD9985. For other SummaCut cutters use the MD9910.</p>	<p>040</p>	<p>09-06-2021</p>
---	---	------------	-------------------

## Firmware Upgrade

Click on Tests (3) and Update Firmware... (4). Navigate to the folder where the latest firmware has been downloaded and select the new firmware.



Summa Cutter Control then asks to confirm to upgrade the cutter with the selected file:



This will start the upgrade.

The progress is displayed on the front panel of the cutter:

```
READING DATA xxx
ERASING
!!PLEASE WAIT!!
```

PROGRAMMING  
!!PLEASE WAIT!!  
UPGRADE OK

When the last message (UPGRADE OK) is displayed, the machine must be turned off and then on again to complete the upgrade.



**WARNING:** POWERING DOWN THE UNIT TOO EARLY WILL CAUSE DAMAGE TO THE MACHINE.