

# Read out Automatic

## Introduction

Read out automatic is a feature in SummaFlex that will make the software poll for the size of the loaded media before it sends the job to the machine. This way SummaFlex will know if it will have to panel larger jobs when needed.

## Trouble shooting

When you have too much feeding between 2 panels and the machine feeds in 2 times. Than in most cases it is caused by parameter “Read out Automatic” that is set OFF.

When the origin was set further to the back (X direction – feeding direction) e.g. 10cm to the back than the machine will only be able to cut 1m10 cm in the first panel. For this reason it will **clip** 10cm of the job in the first panel.

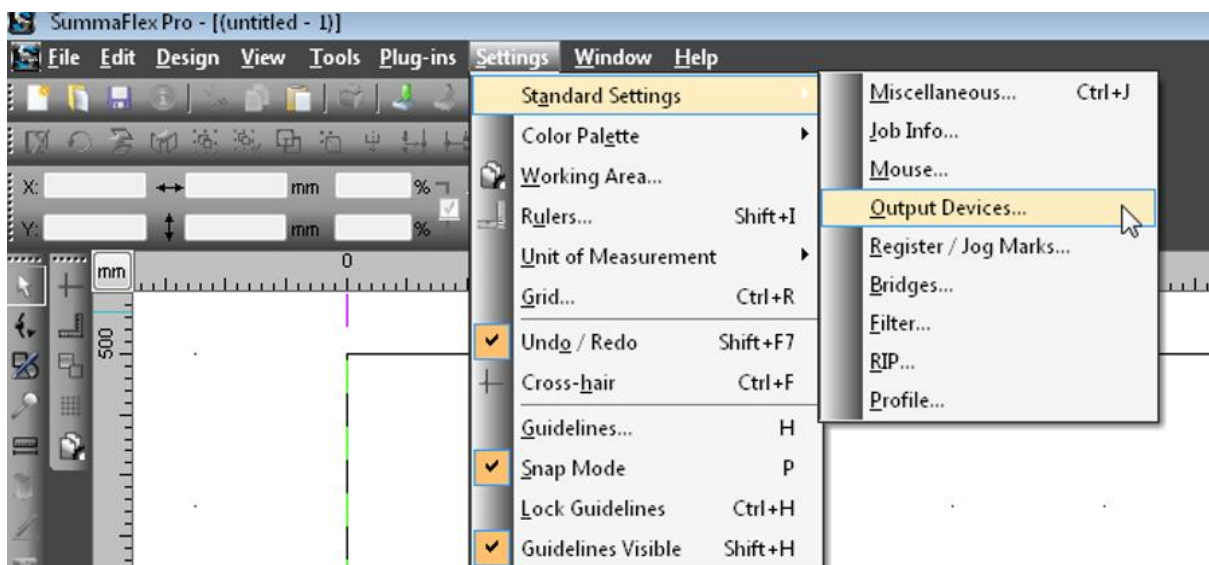
Then it will try to feed 1m20 forward, this also will only work out in 2 steps:

- 1) feeding 1m10
- 2) **feed extra 10 cm** to get the 1m20 feed of the panel. This last feed will create a **gap of 10 cm** between your panels. However the total length of the job will be correct.

After this the machine will continue cutting the job, however between panels you get this gap. So the complete **length of the job will be correct**, however there will be a **part clipped** out the job and not cut and fed forward instead.

## Read out automatic

To set the “read out automatic” feature active follow procedure below:



Setup - Output Devices

Current Output Device

SUMMA F-Series CAM

Driver: SUMMA F-Series CAM

File: C:\Program Files (x86)\Summa\SummaFlex Pro\cutter\SUMMA

Port: << Please select >>

Mode: Output with layer assignment

Material: Default

Default Settings

<input type="checkbox"/> Keep reference point	<input type="checkbox"/> Weed border: 2.00 mm
<input type="checkbox"/> Stack processing	<input type="checkbox"/> Overlap: 0.00 mm
<input type="checkbox"/> Wait after segment	Copies spacing: 0.00 mm
<input checked="" type="checkbox"/> Sort before output	Segment spacing: 0.00 mm
<input type="checkbox"/> Plot to file	Stack spacing: 0.00 mm
<input checked="" type="checkbox"/> Read out automatically	<input type="checkbox"/> No tooltips
<input checked="" type="checkbox"/> Output only tool-assigned layers	<input type="checkbox"/> Enable output for objects larger than page size

OK Cancel Apply