

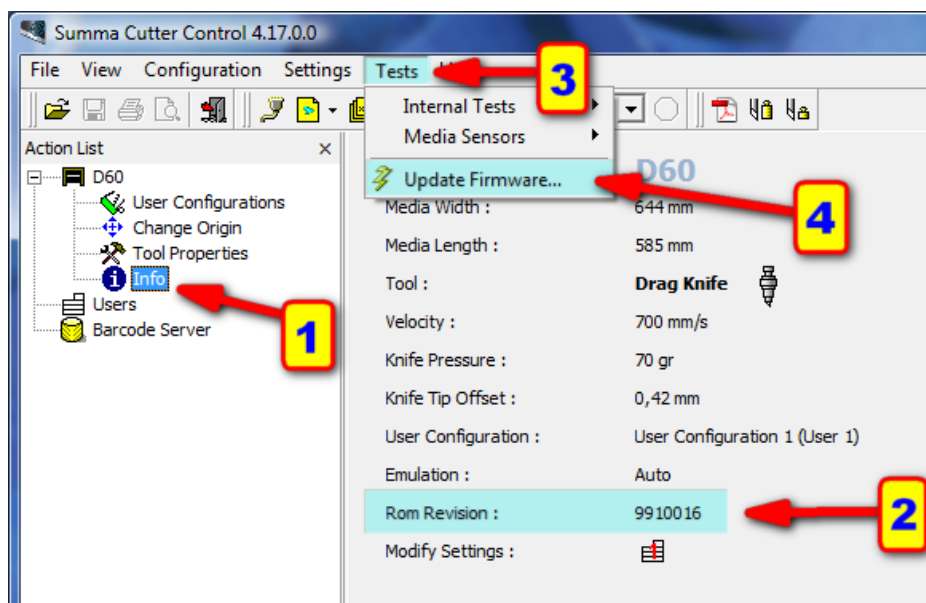
Firmware upgrade on SummaCut

This procedure describes how to upgrade the firmware on a SummaCut series cutter.

It is not necessary to load media in the cutter to perform the test.

Firmware Version Check


You can check the current firmware version with Summa Cutter Control. Connect the machine with the computer, then switch the machine on. Configure Summa Cutter Control to match the used communication interface (USB / RS232). Clicking on Info (1) will read some information from the cutter and displays the Rom Revision (2).



In case the ROM Revision is lower than 9910 016, and you want to use the USB port, it needs to be upgraded in order to be used with Windows 8 or 10. You must then use the serial port to perform this upgrade in case this has to be done from a Windows 8 or 10 computer.

Firmware Download

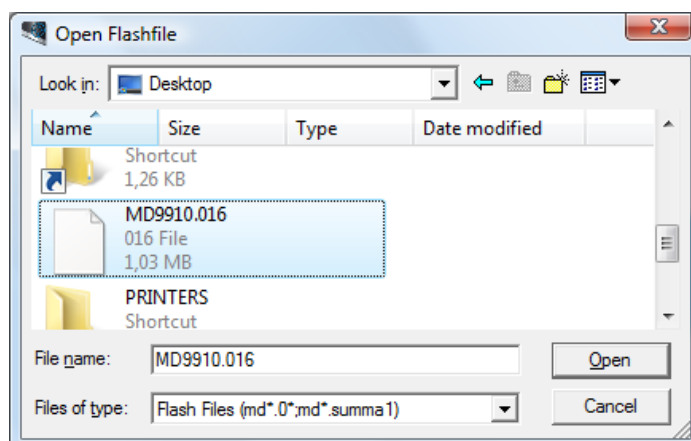
The firmware is available for download from the support page of the Summa website:

	SummaCut D60/SE and D120SE Firmware, MD9910	The latest internal programming for current model SummaCut plotters.	016	16-08-2011
NOTE: This firmware upgrade MD9910 is available for SummaCut cutters with serial numbers below xx0608-xxxxx or for cutters which already have a firmware starting with MD9910. For other SummaCut cutters use the MD9985 firmware.				

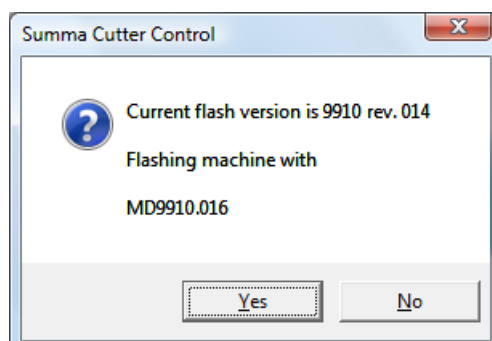
Firmware Upgrade

Power down the cutter and then switch it back on. This is to clear the internal buffers and memory for the new firmware.

Click on Tests (3) and Update Firmware... (4). Navigate to the folder where you downloaded the latest firmware and select the new firmware.



Summa Cutter Control then asks to confirm to upgrade the cutter with the selected file:



This will start the upgrade.

You can follow the progress on the display of the cutter:

READING DATA xxx

ERASING

!!PLEASE WAIT!!

PROGRAMMING

!!PLEASE WAIT!!

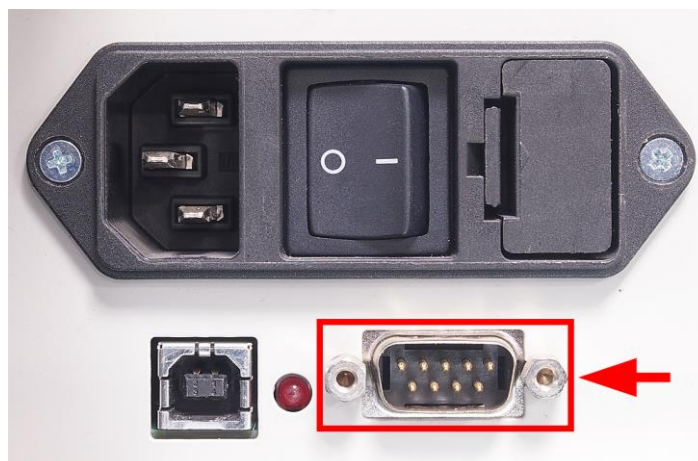
UPGRADE OK

When the last message (UPGRADE OK) is displayed, you need to power down and then power up the cutter to complete the upgrade.



WARNING: POWERING DOWN THE UNIT TOO EARLY WILL CAUSE DAMAGE TO THE MACHINE.

Serial Interface



Using a serial to USB adapter



In case the cutter is connected to the computer using a USB-RS232 adapter, the USB driver for this adapter needs to be installed (and not the one from Summa), and in Summa Cutter Control, the serial port this adapter is emulating should be selected. You will also need to use the serial cable delivered with the machine (reference 423-183) to connect the adapter to the cutter.

Serial interface cable wiring



The serial interface cable reference 423-183 is wired as in below table:

Connector A		Color		Connector B
DB9F				DB9F
3	_____	Black	_____	2
2	_____	Brown	_____	3
5	_____	Red	_____	5
8	_____	Orange	_____	4
7	_____	Yellow	_____	6
4	_____	Green	_____	8
6	_____	Bleu	_____	7
Shell	_____	Drain	_____	Shell

Revised March 8, 2022