

# Creating a backup

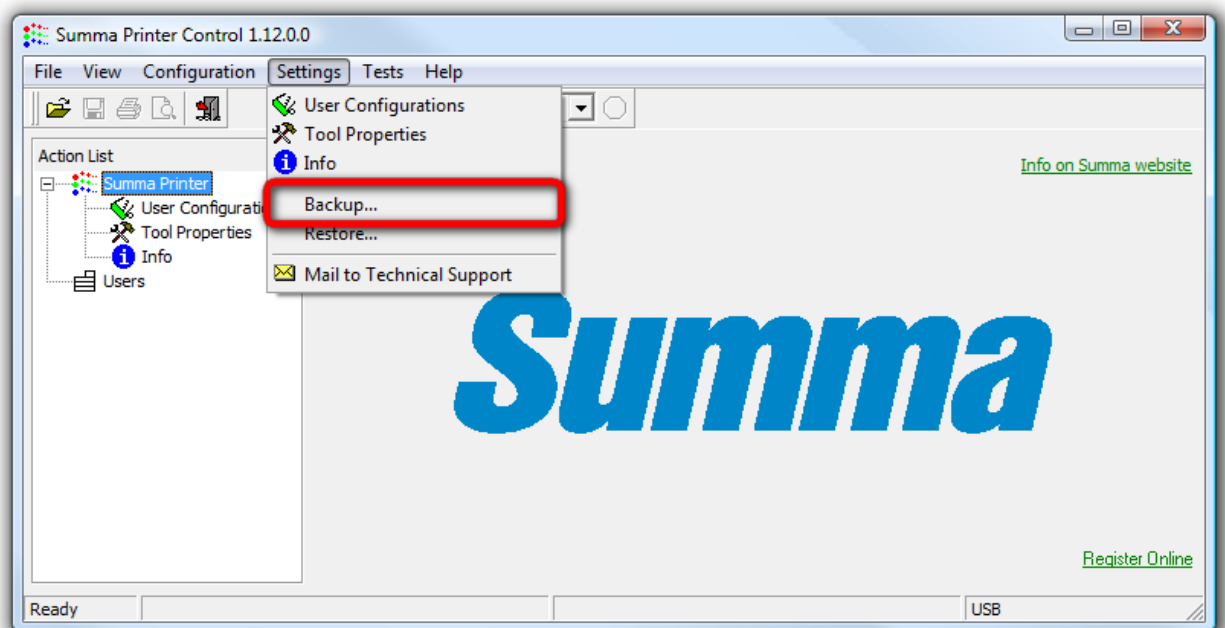
This procedure describes how to make a backup of all parameters stored in the printer.

The backup can be used to send to a (Summa) service engineer for examination, or can be used to revert to a known configuration of the printer.

It is advised to create a backup when installing the machine for the first time and store this data on a safe place. After fine tuning the printer for the different jobs to be done, you can make another backup.

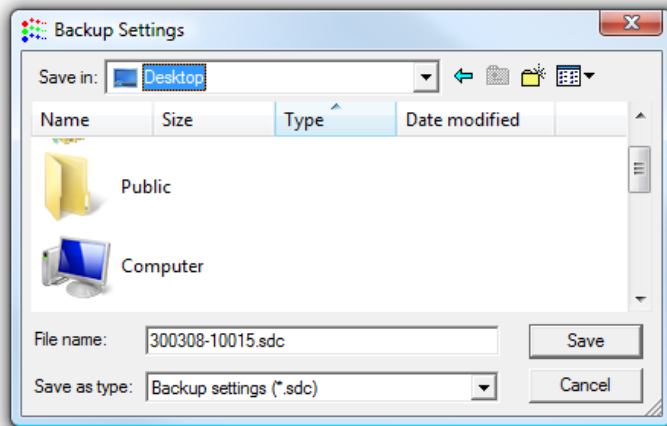
To create a backup, follow the next procedure:

1. Remove all media from the printer.
2. Switch off the printer.
3. Power on the printer. This is to ensure the internal data buffers are cleared and all parameters are set to what is stored in the internal memory of the cutter. Some applications may have changed some parameters to a temporary value.
4. Connect the printer with the computer using the USB cable.
5. Start Summa Printer Control.
6. Click [Settings] – [Backup...]



## Creating a backup

7. Select the folder to where the backup has to be written to and click [Save].

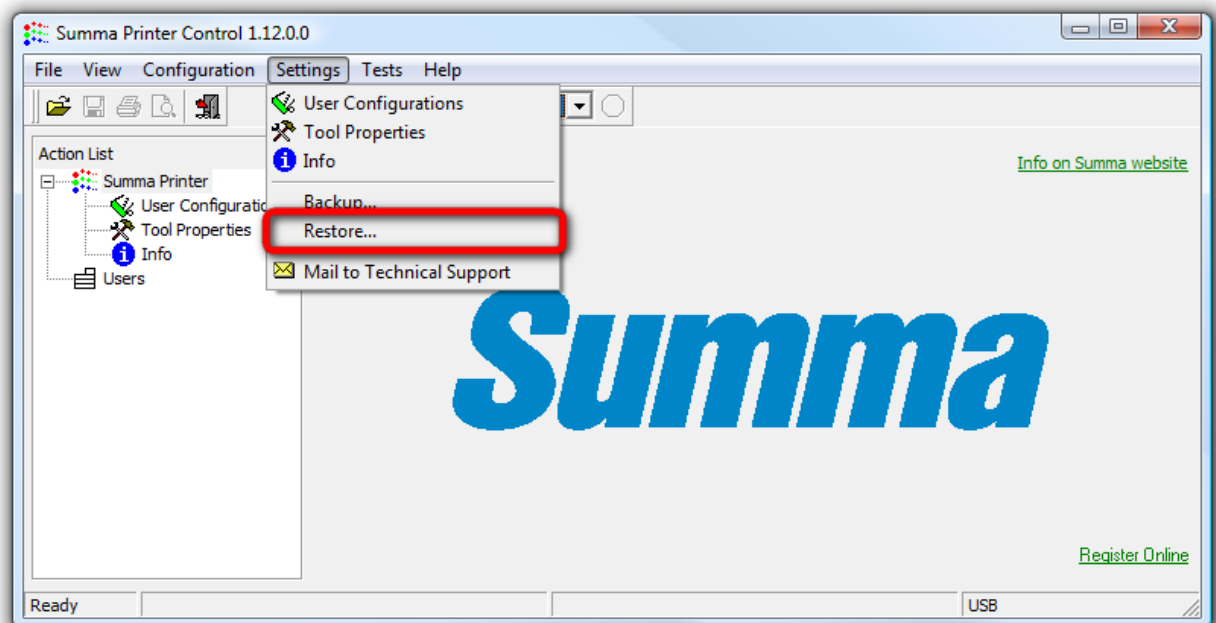


The name used for the backup will be the serial number of the printer. This name can be altered to satisfy your needs.

8. Summa Printer Control will now read all parameters from all user configurations from the printer and write it to the specified location using the specified name.

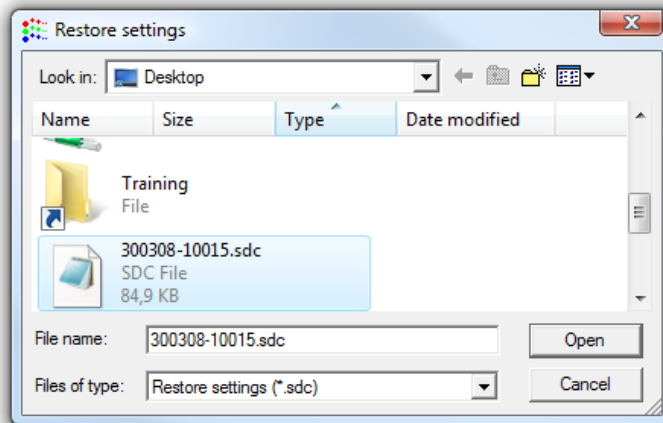
To restore a previously made backup, follow the next procedure:

1. Remove all media from the printer.
2. Power on the printer.
3. Connect the printer with the computer using the USB cable.
4. Start Summa Printer Control.
5. Click [Settings] – [Restore...]



# Creating a backup

6. Select the folder to where the backup was written to, select the backup (which is usually the serial number of the printer) and click [Open].



7. Summa Printer Control will now overwrite all configurations of the printer with the values contained in the specified backup.
8. Wait at least 1 minute before switching off the printer to give the printer the time to update all user configurations.
9. Restart the printer.