

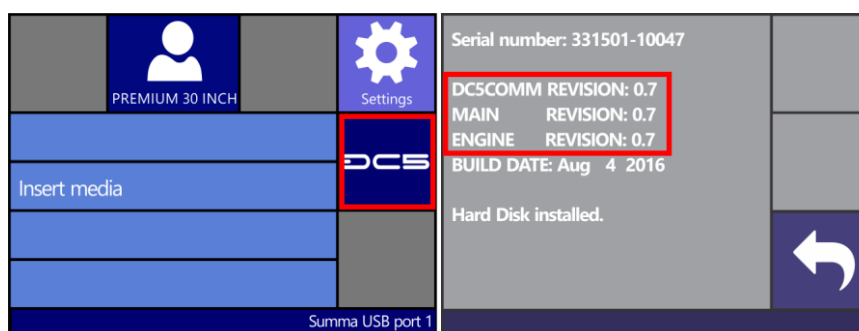
Firmware upgrade of a DC5-DC5sx

This procedure describes how to upgrade the firmware on a Summa DC series printer.

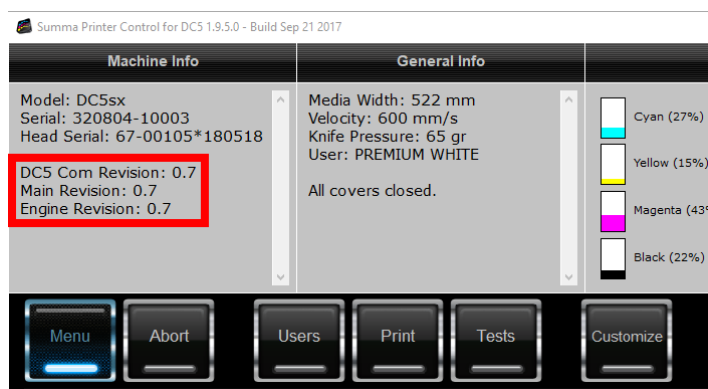
It may be necessary to upgrade the firmware in order to be able to use the latest features or additional spot colors

Firmware version check

Before upgrading check the current version of the machine. This can be done from the display of the machine. Click on the DC5 icon to view the firmware revision.



The firmware version of the machine can also be checked from Summa Printer Control.



The different boards need to have the same firmware revision.

It is advised to make a backup of the machine before starting the firmware upgrade process.

Firmware download

The firmware consist of 2 parts: one combined part for the main board and engine board, and a second part for the communication board. The new firmware can be downloaded from the Summa website, or can be downloaded automatically from Summa Printer Control.

Firmware upgrade

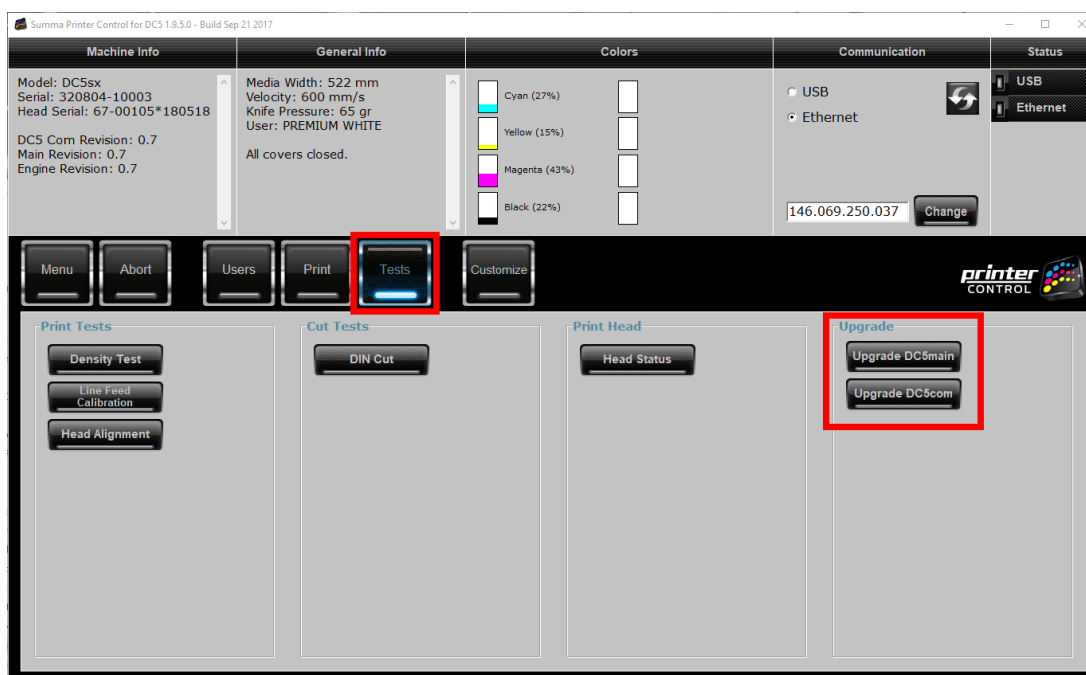
Connect the printer to the computer.

Switch the printer on, or, if it was on, then reboot the printer.

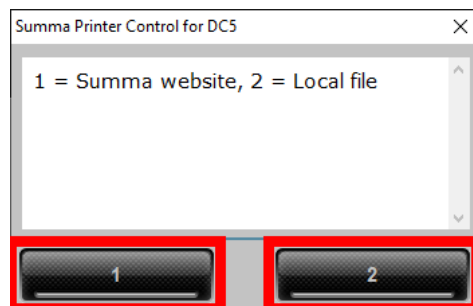
Start Summa Printer Control.

In Summa Printer Control select the communication port (USB or network).

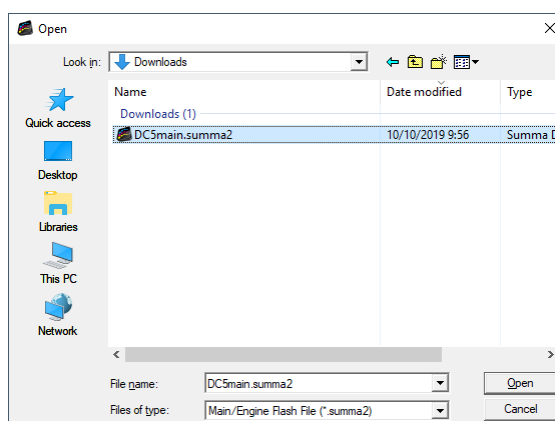
Click on [Tests].



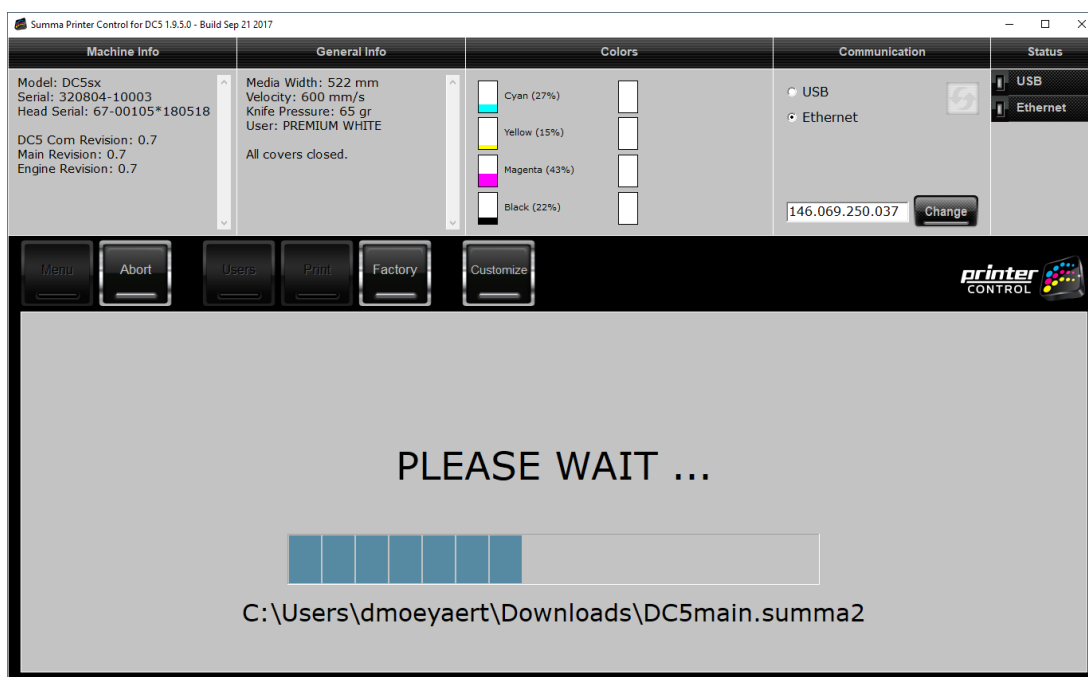
Click on [Upgrade DC5main].



Click on [1] to have Summa Printer Control downloading the right firmware, or click on [2] to use the previously downloaded firmware, and select the firmware:



Summa Printer Control then sends the selected firmware to the machine:

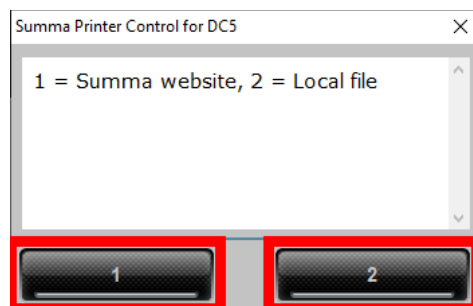


The progress of the firmware upgrade can be followed on the display of the printer.

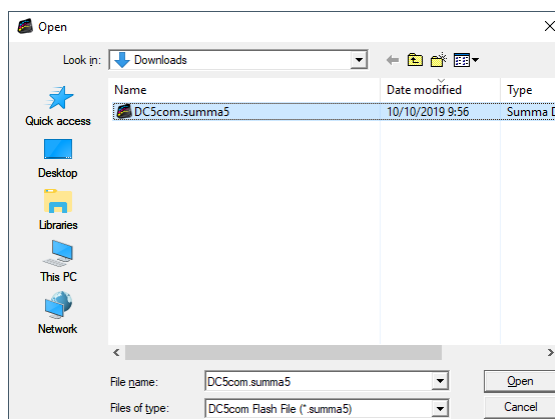
At the end of the firmware upgrade of the main board and engine board a message appears indicating the upgrade was successful.

Reboot the machine.

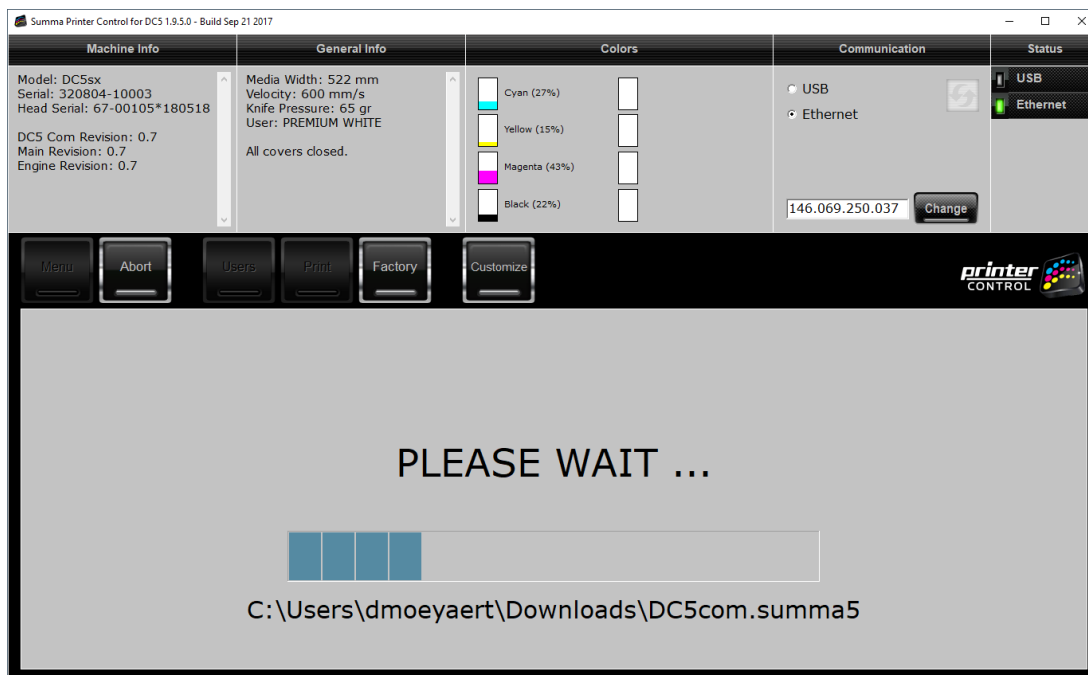
Then the communication board can be upgraded by clicking on [Upgrade DC5com].



Click on [1] to have Summa Printer Control downloading the right firmware, or click on [2] to use the previously downloaded firmware, and select the firmware:



Summa Printer Control then sends the firmware for the communication board to the machine:



The progress of the firmware upgrade can be followed on the display of the printer.

At the end of the firmware upgrade of the communication board a message appears indicating the upgrade was successful.

Reboot the machine.



WARNING: INTERRUPTION OF THE FIRMWARE UPDATE PROCEDURE WILL LIKELY RENDER YOUR MACHINE UNUSABLE.

Revised October 10, 2019