



Onyx and the F-Series Postertrimming

Rev: draft

1 Version

The procedure was written with ONYX Posterprint version 12.2.0.1706



Poster trim does not require an installation of a cutter driver. And it does not use the program SummaFlex Pro.

2 General Workflow for Poster trimming

2.1 General

Poster trimming function of Axis control is designed so that posters can be cut out without having to create cut lines or position registration marks and without the use of SummaFlex PRO.

The rip has to print a black border around the poster of 5 mm wide and the distance between those black borders also needs to be 5mm.

This frame will then be read by the camera on the table and a cut line will be generated by axis control to trim the poster.

The posters must always be left or right aligned (setting during printing) and one poster always needs to have at least one side of its border next to another one. Other than that, there are not a lot of restrictions.

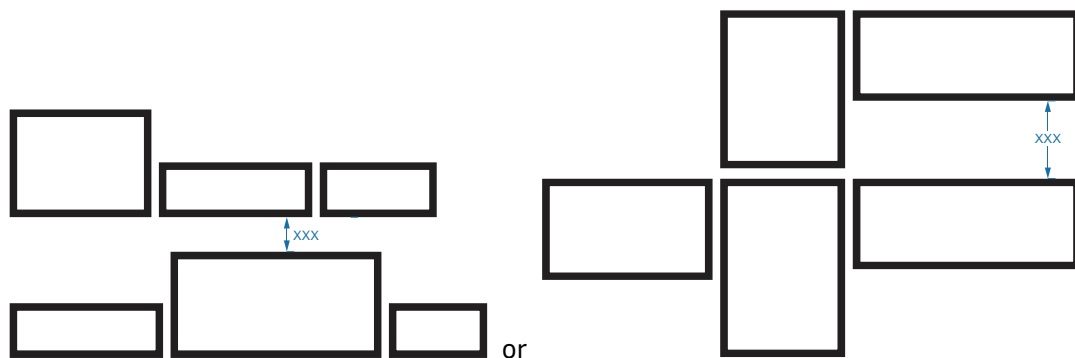
In order to speed up the scanning of the borders, the grouping of the posters can be described and split up into different configuration. It is important to set the configuration correctly before starting the job.

2.2 Examples of possible configurations:

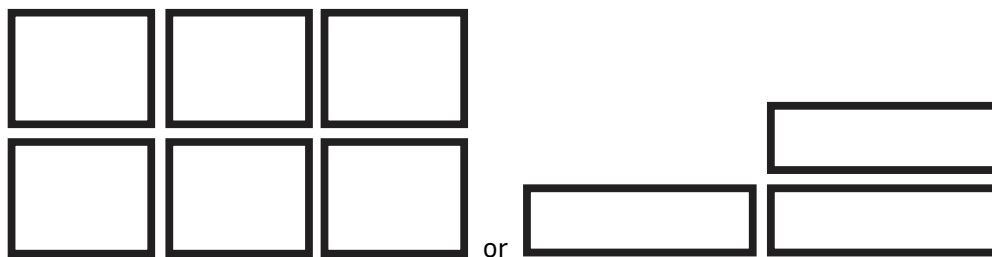
- Single poster:



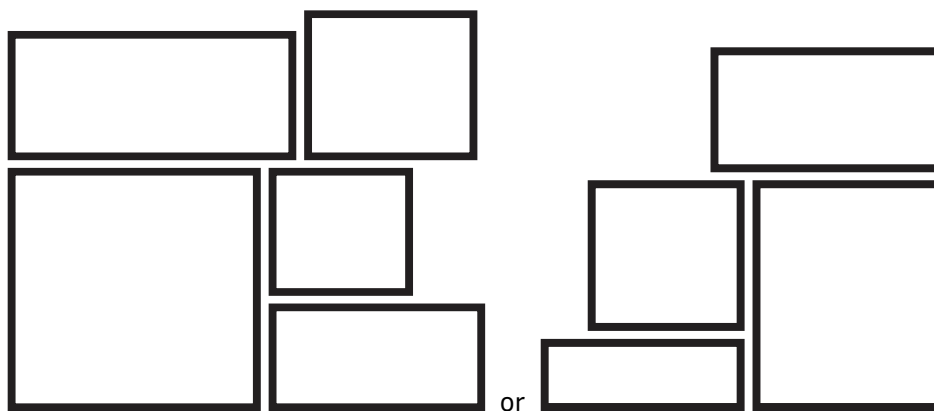
- Single row (may be one row or multiple rows). These posters will be cut row per row. The rows may be top aligned or bottom aligned. The distance marked on the examples below as xxx must be equal or larger then 5mm and smaller or equal to 250mm.



- Multicopy:



- Random:



NOTE: If random workflow is used, then the posters must always be bottom aligned.

2.3 Preparing the File

There is no need to prepare the poster. Apart from setting resolution and size correct so that this does not need to be redone in the rip.

File type may be tif, psd, ps, pdf, jpg,....

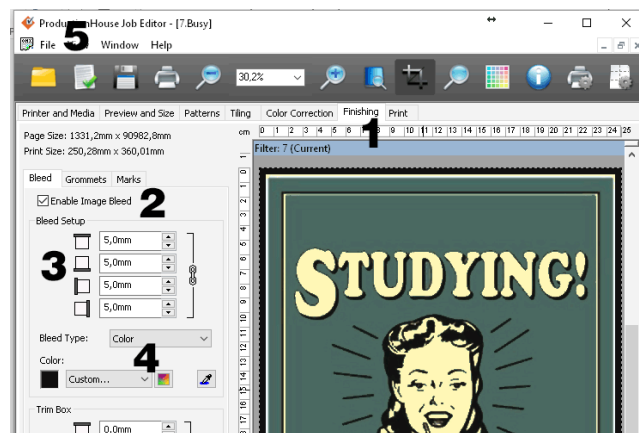
Check ONYX documents for complete list of compatible file types.

3 Setting up ONYX for Posterprint

A quickset can be made for Posterprint in Summa. Summa Can provide an ONT file that can be imported, or the ONT file can be made by setting the parameters correct in job editor and exporting those settings then to an ONT file.

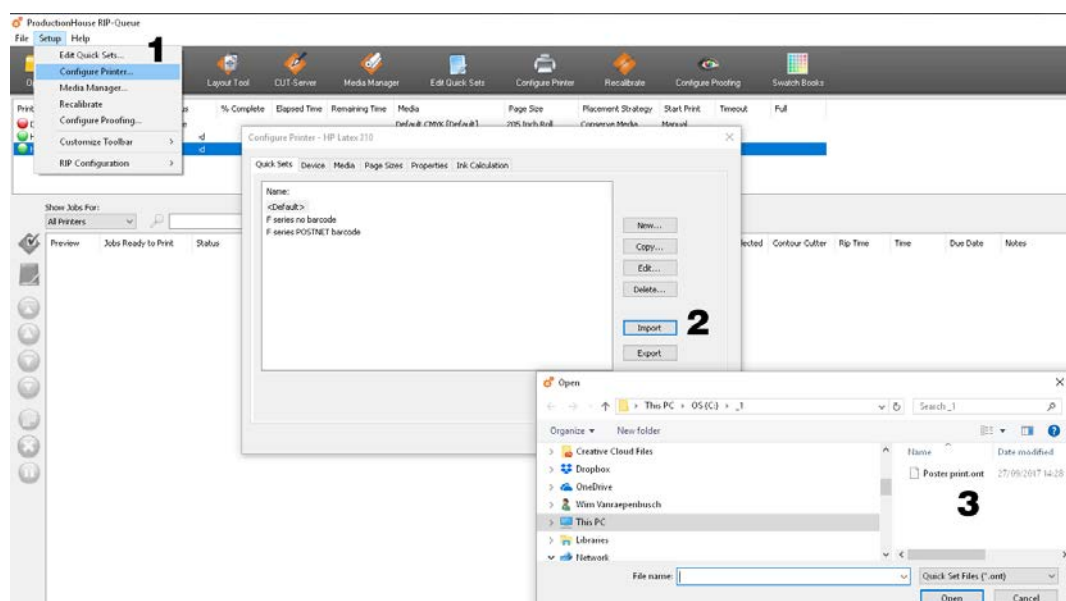
To make an ONT file (Skip this step if ONT file is provided)

1. Open any job in Job editor and click on finishing tab
2. Check box 'Enable Image Bleed
3. Set size to 5mm
4. Choose as bleed type Color and set Color to Black
5. Go to File and save as quickset



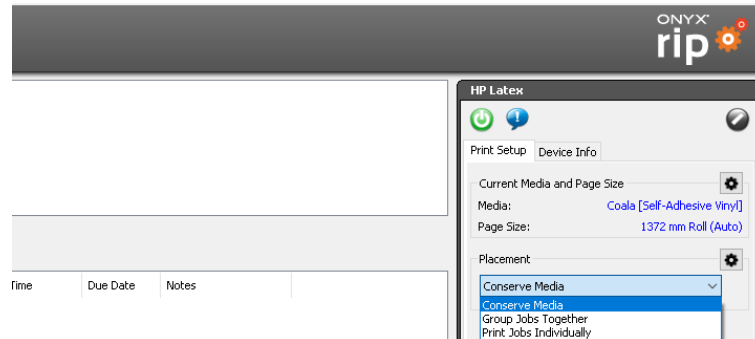
To make a quick set do following:

1. Go to Setup Configure Printer
2. Click on Import
3. Choose correct ONT file and click on Open.
4. Click OK

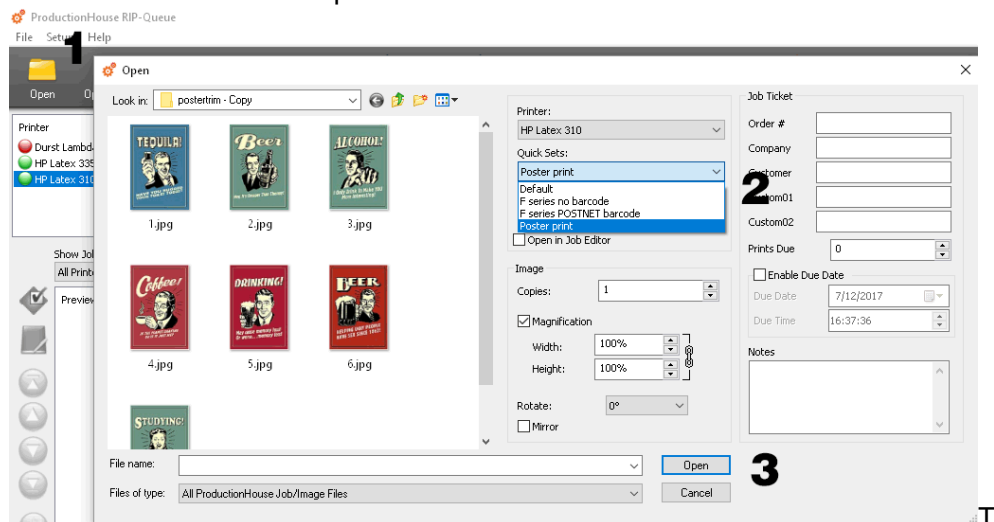


4 Printing the files

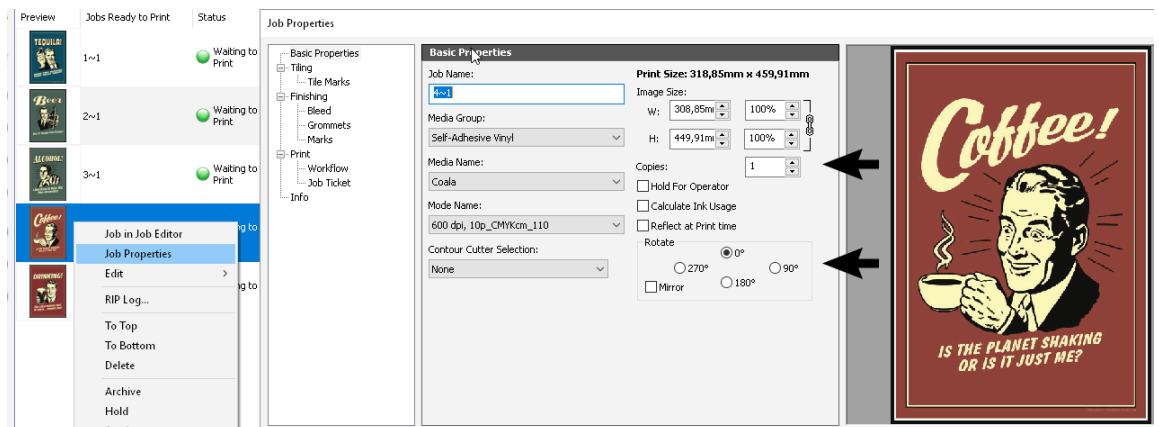
1. Set option to group or nest. Click on the dropdown box at the right side of the window and choose Conserve Media (random nesting) or group job together (row per row) as workflow type.



2. Click on open icon or go to file -> Open.
3. Set Quickset to Poster Trim.
4. Select files and click on Open button.



5. If multiple copies of one poster are needed or if the poster needs to be rotated, then right click the file in question, choose job properties and set copies or other orientation.

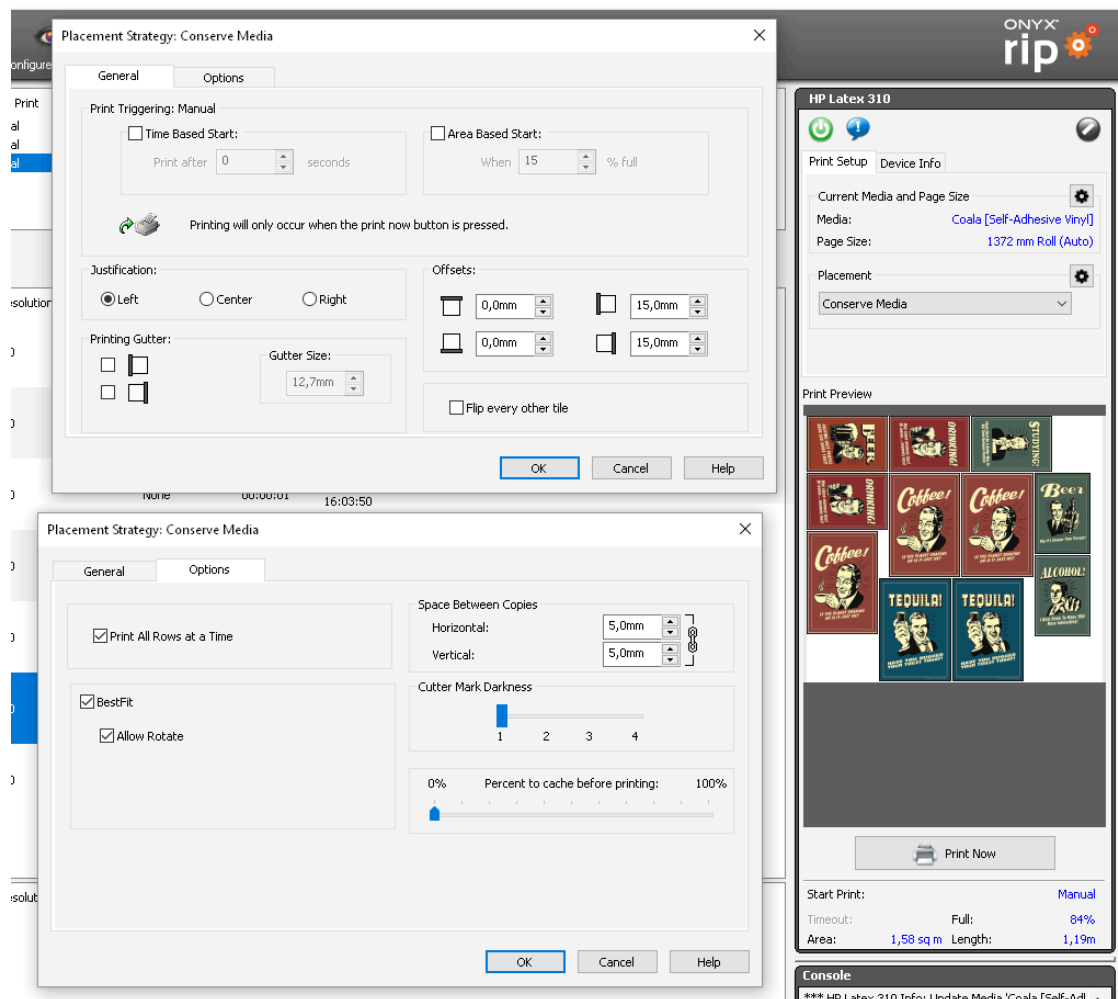


6. Check or set the placement parameters.

For Random nesting (Conserve Media), make sure that left and right offset are set to 15mm. Choose right or left alignment as Justification setting (never choose center).

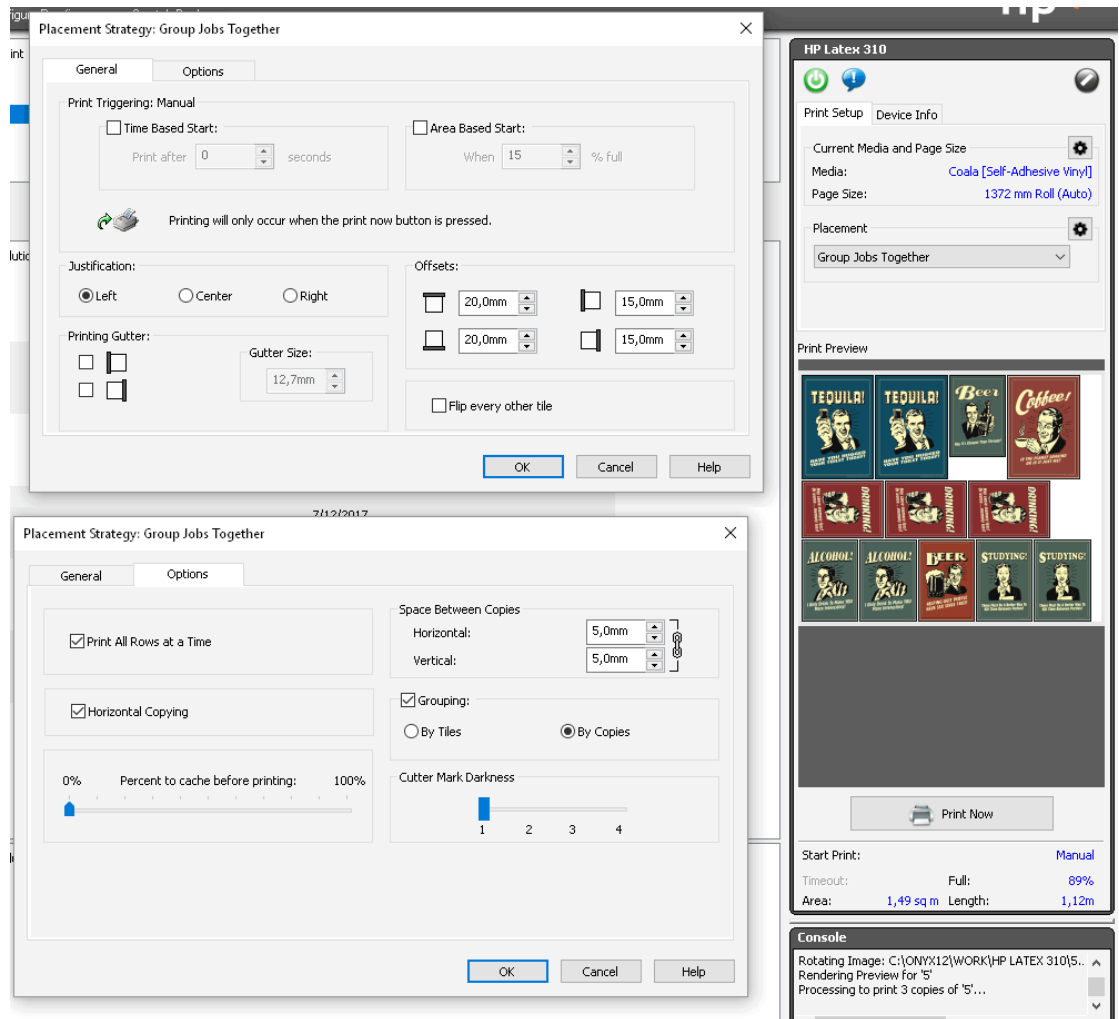
Set other settings in the first tab as they are needed.

In the second tab make sure that Space between copies is set at 5mm for both the vertical and horizontal direction. It is recommended check the box in front of Print all rows at same Time, Best Fit and Allow rotate.



For row per row (group jobs together), make sure that left and right offset are set to 15mm. Choose right or left alignment as Justification setting (never choose center).

In the second tab make sure that Space between copies is set at 5mm for both the vertical and horizontal direction and that the box just before Horizontal copying is checked. It is recommended check the box in front of Print all rows at same Time.



7. If the preview looks OK, then click on the Print Now button to launch the print.

Example of preview that is not OK (All posters must touch with at least one side to another).

The screenshot shows the ONYX RIP software interface. The top menu bar includes options like Open, Open HP Data, Job Editor, Layout Tool, CIP Colors, Media Manager, Job Data Sets, Catalog Files, Recalculate, Catalog Pooling, and Switch Device. Below the menu is a status bar with printer information: HP Latex 300, Status: Offline, Job: 100, and a progress bar at 50%.

The main area displays a table of jobs. The table has columns: Job No., Status, Order No., Printer, Size, Media, Copies, Print Mode, Resolution, Reflected, Colour Cut, Rip Time, Time, Due Date, and Notes. The jobs are listed as follows:

Job No.	Status	Order No.	Printer	Size	Media	Copies	Print Mode	Resolution	Reflected	Colour Cut	Rip Time	Time	Due Date	Notes
1	Waiting to Print		HP Latex 300	36.00cm x 40.00cm	Coated [Self-Adhesive Vinyl]	2	600 dpi, 120_200KHz_110	600	None	None	00:00:01	7/12/2017 09:12:06		
2	Waiting to Print		HP Latex 300	25.00cm x 36.00cm	Coated [Self-Adhesive Vinyl]	1	600 dpi, 120_200KHz_110	600	None	None	00:00:01	7/12/2017 09:12:06		
3	Waiting to Print		HP Latex 300	36.00cm x 40.00cm	Coated [Self-Adhesive Vinyl]	2	600 dpi, 120_200KHz_110	600	None	None	00:00:01	7/12/2017 09:12:06		
4	Waiting to Print		HP Latex 300	25.00cm x 36.00cm	Coated [Self-Adhesive Vinyl]	1	600 dpi, 120_200KHz_110	600	None	None	00:00:01	7/12/2017 09:12:06		
5	Waiting to Print		HP Latex 300	36.00cm x 40.00cm	Coated [Self-Adhesive Vinyl]	2	600 dpi, 120_200KHz_110	600	None	None	00:00:01	7/12/2017 09:12:06		
6	Waiting to Print		HP Latex 300	25.00cm x 36.00cm	Coated [Self-Adhesive Vinyl]	1	600 dpi, 120_200KHz_110	600	None	None	00:00:01	7/12/2017 09:12:06		
7	Waiting to Print		HP Latex 300	36.00cm x 40.00cm	Coated [Self-Adhesive Vinyl]	2	600 dpi, 120_200KHz_110	600	None	None	00:00:01	7/12/2017 09:12:07		

On the right side, there is a preview panel showing a grid of poster thumbnails. A large red 'X' is drawn over this panel, indicating that the preview is not correct. Below the thumbnails, there are buttons for 'Print' and 'Print Item'. At the bottom right, there is a 'Comments' section with a text area and a 'Print' button.