

How to install a driver for a S Class 2



Introduction

This document describes how to install the software necessary to drive the a S Class 2 series roll-cutter.

Note: We do not work with a 'Windows based printer driver'.

A **design software** is needed to create a design. Popular design programs are CorelDRAW, Adobe Illustrator, Inkscape, ... Design software is not supplied from Summa.

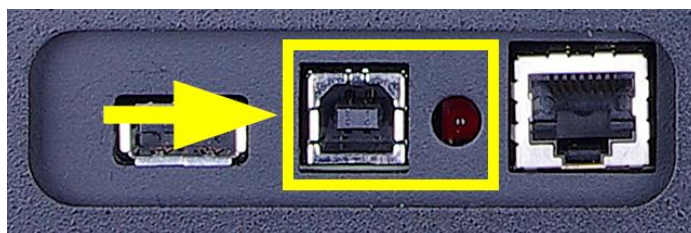
The contours in the job created with one of those design software's need to be sent to the cutter. Before the contours can be sent, the contours need to be converted in commands understood by the cutter (DM/PL or HP-GL commands). This is accomplished by the software **GoSign** or **WinPlot**. GoSign or WinPlot then needs to send the commands to the cutter using a communication port. Depending on the communication interfaces available, and/or the interface used to drive the cutter, different **driver software** needs to be installed.

Transferring the job from the design software to the cutting software can be done by means of a **plug-in**.

For GoSign to work with a S Class 2 roll cutter, firmware version 25 or later is required.

Driver software

USB Interface




USB Driver install

To be able to use the USB interface, a USB driver needs to be installed.

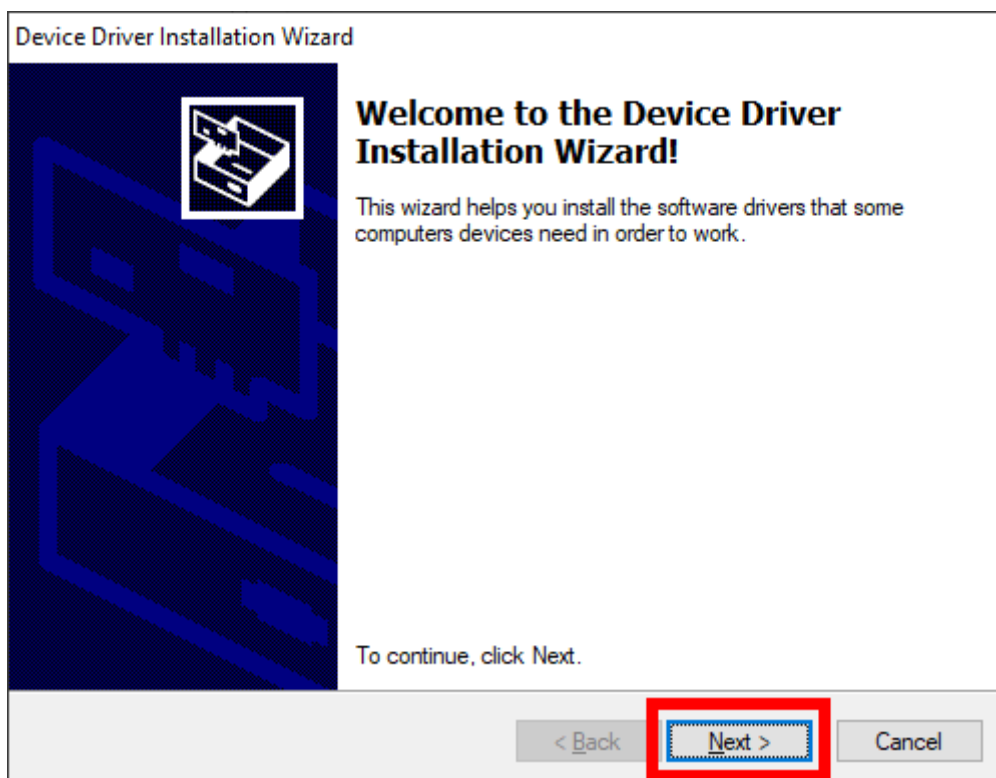
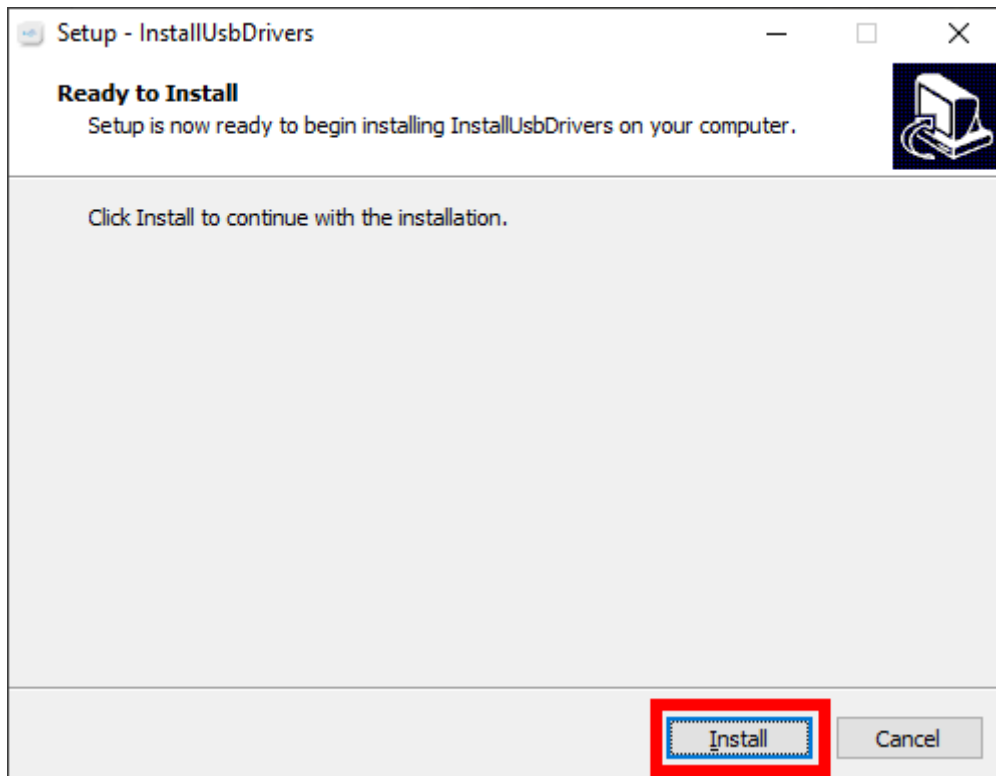
This driver is available from the support page of the Summa website:

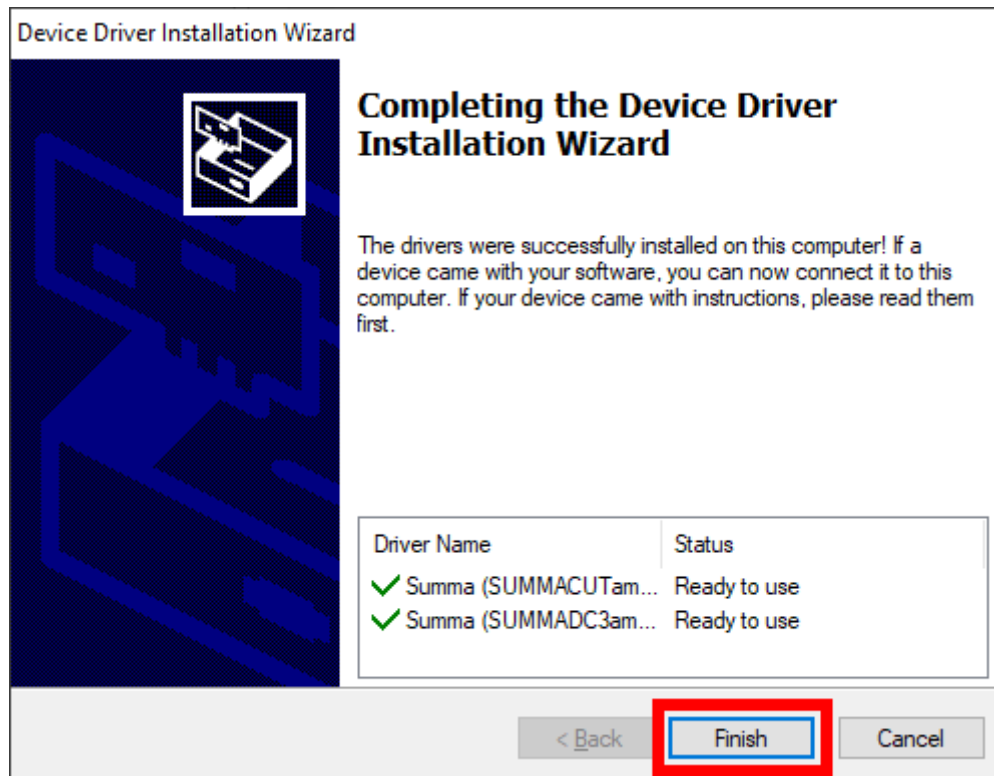
<https://www.summa.com/en/support/software-firmware/>

Vinyl Cutters

USB Drivers	Description	Version	Date
 USB Cutter driver	USB driver for Windows 7, 8, 8.1, 10, 11	10.0 & 7.0	18-06-2020
 OPOS-CAM USB driver	USB Camera driver for Windows 7, 8, 8.1, 10, 11	1.0.136	08-05-2014

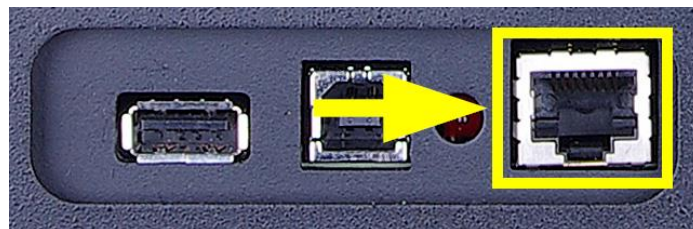
Download the USB driver. Double click on the downloaded driver to start the install process. Follow the install wizard to complete the install.





In the software driving the machine, the communication port used to send the data to the cutter needs to be set to the USB port.

Network Interface



When the cutter is connected using the network interface, you do not need a driver, you have to set the correct settings in the cutting software.

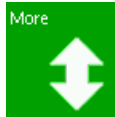
Network Configuration of the Cutter

It is not necessary to load media in the cutter to change the parameters.

Use the below steps to change the network parameters of the cutter:


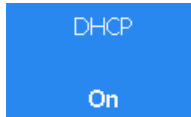
- Power on the cutter.

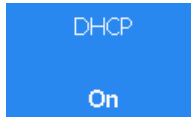
- Click the  button. 

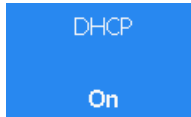


- Click the  button.



- Click the  button.
- Click the  button.



- Click the  button.
- Choose between “No” (static IP address) or “Yes” (dynamic IP address). A static IP address is preferred to prevent the IP address of the cutter to change due to the DHCP server lease time settings.

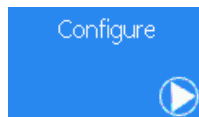


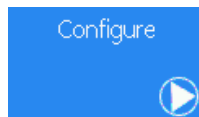
- Press  to confirm the selection.




- When DHCP = On was selected, then press  to return to set the machine back online.

In case DHCP = Off was selected, then an IP address has to be entered.




- Click the  button.
- Click on the IP address. Change the IP address using the numeric keypad. Confirm when done.
- Click the subnet mask. Change the subnet mask using the numeric keypad. Confirm when done.



- Press  to confirm the new IP address and subnet mask.



- Press  to return to set the machine back online.

GoSign



Note: The firmware of the machine has to be at least revision 025 to be able to work with GoSign 2.1. In case the firmware is on a lower level, then an upgrade of the firmware is required.


This program can import PDF, DXF, OXF and SGP files and then send data to the cutter. Most design programs are able to generate files in one of those formats.

We do not work with a 'Windows based printer driver'.

Download

The program *GoSign* can be downloaded from the Summa support website:

<https://www.summa.com/en/support/software-firmware/>

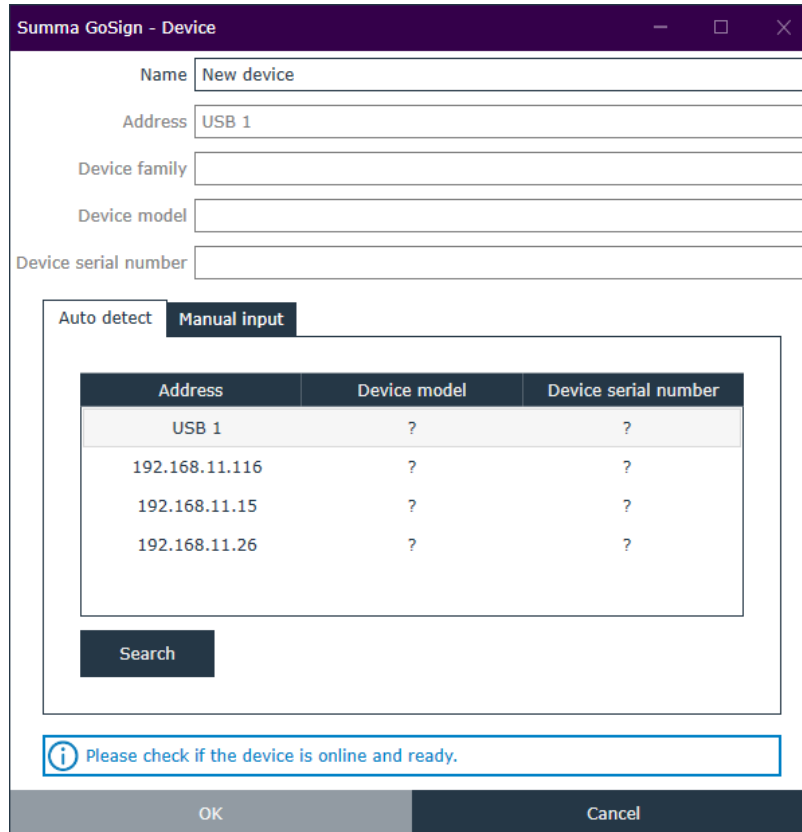
 Summa GoSign V2	<p>Unleash the full potential of your Summa vinyl cutter with the GoSign 2.3.0.</p> <p>GoSign is a Windows-based production tool, acting as a bridge between the design software and a Summa Roll Cutter. It allows you to manage your preferred workflow with great flexibility. Enjoy automated cutting options, custom configuration of action sets, easy plug-ins for design programs and much more.</p> <p>Windows 7 (Professional - Enterprise)/8 (Professional - Enterprise)/ 8.1 (Professional - Enterprise)/10 (Professional - Enterprise)/11 (Professional - Enterprise) 32-bit & 64-bit</p> <p>With the latest updates and Service Pack</p> <p>GoSign is to be used with Summa vinyl cutters SummaCut R(L) (firmware rev039 or higher), S Class 2 (firmware rev024 or higher) and S One (firmware rev005 or higher).</p> <p>Discover the Pro Pack with a free 30-day trial by registering during setup.</p>	2.3.0	14-06-2022
--	---	-------	------------

This program works as a 'cutter driver', and converts the design created and exported in one of the supported formats in commands understood by the cutter.

The manual with the detailed instruction how to use GoSign can be downloaded from the manuals section of the support page on the Summa website.

Configuration

On first start of GoSign, a dialog box is presented showing the cutters connected to the computer using the USB port, or found on the network the computer is connected to.

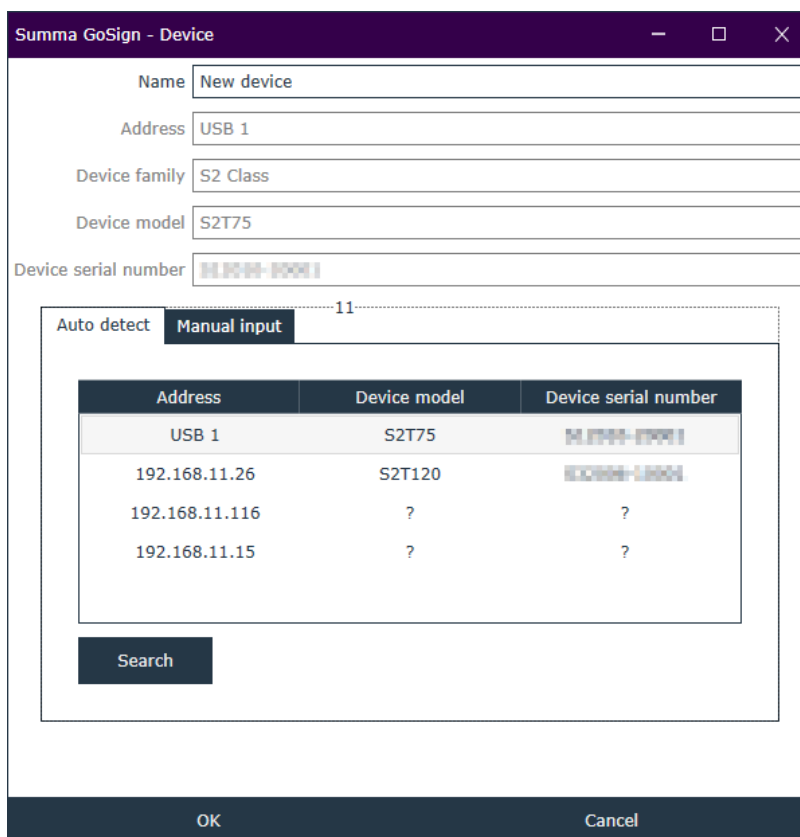


The dialog box 'Summa GoSign - Device' contains the following fields and controls:

- Name:** Text field with 'New device'.
- Address:** Text field with 'USB 1'.
- Device family:** Text field.
- Device model:** Text field.
- Device serial number:** Text field.
- Auto detect / Manual input:** Two tabs. The 'Manual input' tab is active.
- Table:** A table with 3 columns: Address, Device model, and Device serial number. It lists four entries: 'USB 1', '192.168.11.116', '192.168.11.15', and '192.168.11.26', each with '?' in the other two columns.
- Search:** A button below the table.
- Message:** A blue box with an information icon and the text 'Please check if the device is online and ready.'
- Buttons:** 'OK' and 'Cancel' at the bottom.

Address	Device model	Device serial number
USB 1	?	?
192.168.11.116	?	?
192.168.11.15	?	?
192.168.11.26	?	?

For GoSign to be able to query the info needed from the cutter, media needs to be loaded.
Load media in the cutter(s), and click the [Search] button.



Summa GoSign - Device

Name: New device

Address: USB 1

Device family: S2 Class

Device model: S2T75

Device serial number: XXXX-XXXX

Auto detect Manual input 11

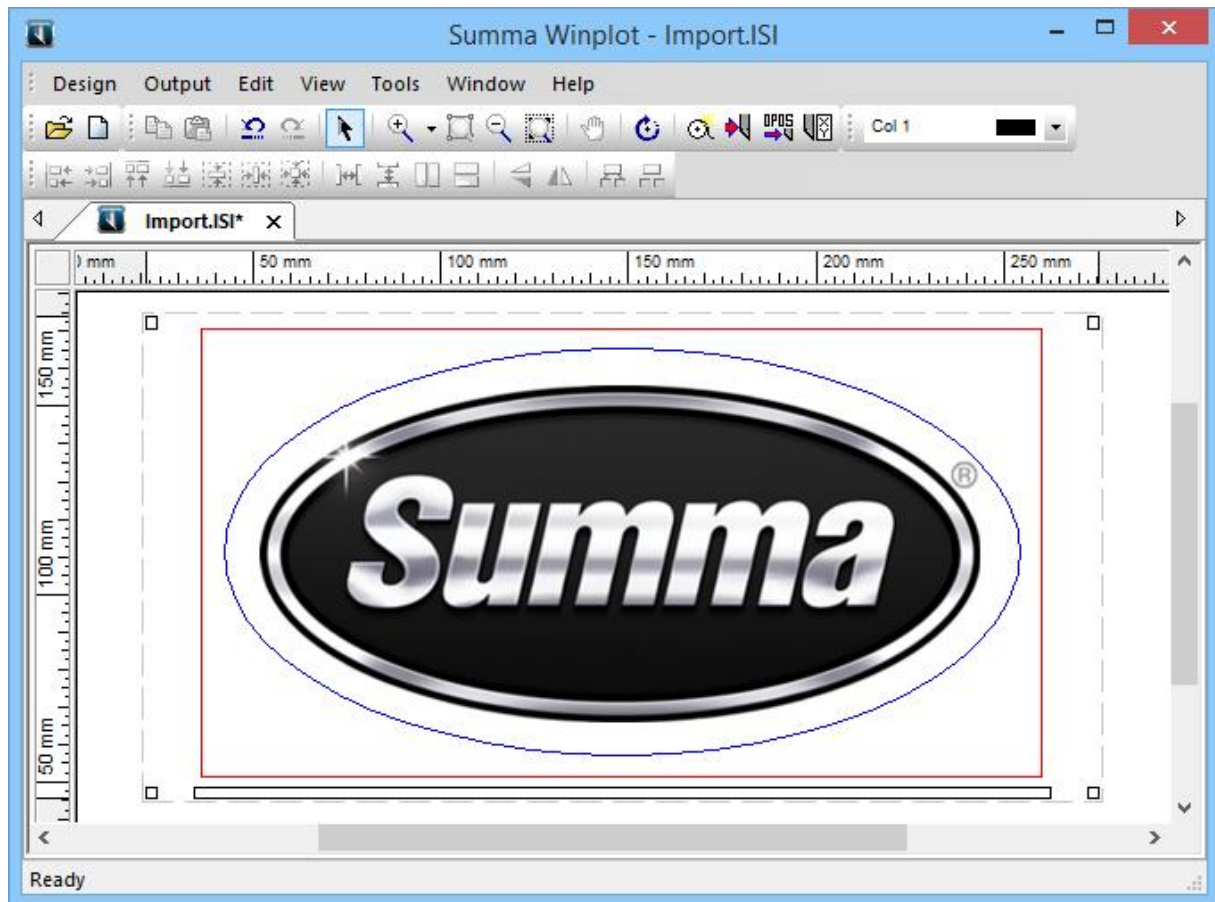
Address	Device model	Device serial number
USB 1	S2T75	XXXXXXXXXX
192.168.11.26	S2T120	XXXXXXXXXX
192.168.11.116	?	?
192.168.11.15	?	?

Search

OK Cancel

Select from the above list of connected cutters the one GoSign has to drive, and click [OK].

WinPlot



From Windows Vista on, we work with a program called *WinPlot*.


This program can import EPS, AI and PDF files and then send data to the cutter. Most design programs are able to generate files in one of those formats.

We do not work with a 'Windows based printer driver'.

Download





The program *WinPlot* can be downloaded from the Summa support website:

<https://www.summa.com/en/support/software-firmware/>

 WinPlot	Cutting program that imports EPS, AI and PDF files: positioning, rotating and scaling possibilities. Supports Vista/7/8/10 32-bit & 64-bit, and is compatible with all Summa brand cutters.	11.8.0.0	08-05-2019
--	---	----------	------------

This program works as a 'cutter driver', and converts the design created and exported in EPS, AI or PDF format in commands understood by the cutter.

The manual with the detailed instruction how to use WinPlot can be downloaded from the manuals section of the support page on the Summa website.

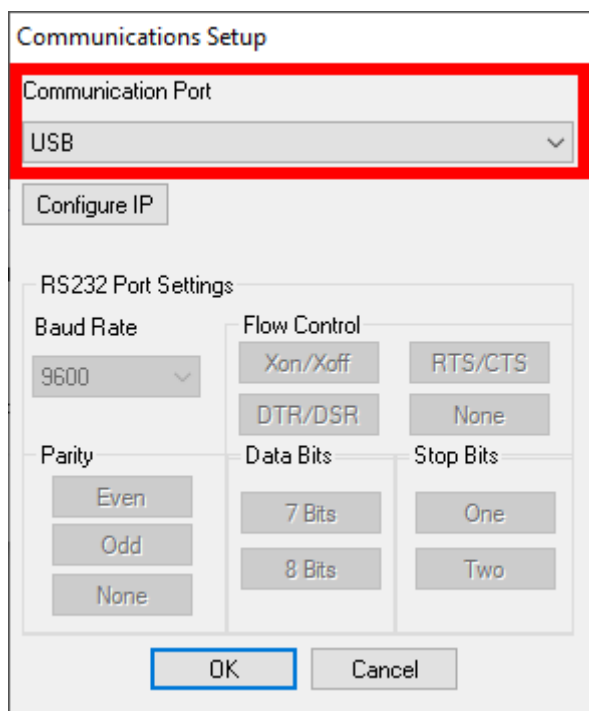
WinPlot	Version	Date
 English	07	31-03-2016
 Français	07	31-03-2016
 Deutsch	07	31-03-2016
 Nederlands	07	31-03-2016

Configuration

USB Port

To configure *WinPlot* for use of the USB interface with a Summa Cutter do the following:

- In the *Communication Setup* dialog set the options as in the picture below: in the Communication Port drop down box, select USB.



Communications Setup

Communication Port
USB

Configure IP

RS232 Port Settings

Baud Rate: 9600

Parity: Even, Odd, None

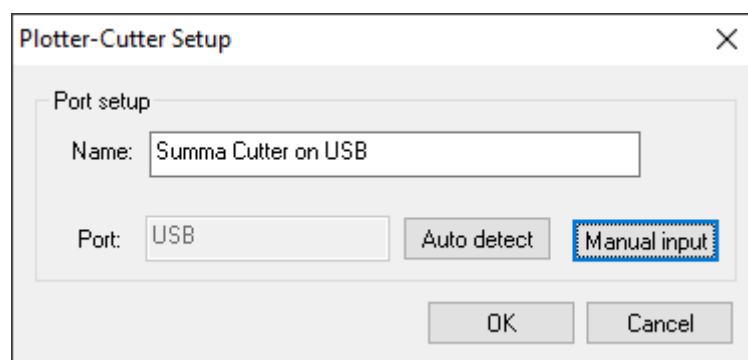
Flow Control: Xon/Xoff, RTS/CTS, DTR/DSR, None

Data Bits: 7 Bits, 8 Bits

Stop Bits: One, Two

OK Cancel

- Clicking the [OK] button returns you to the *Plotter-Cutter Setup* dialog. There you can optionally change the name of the installed cutter.

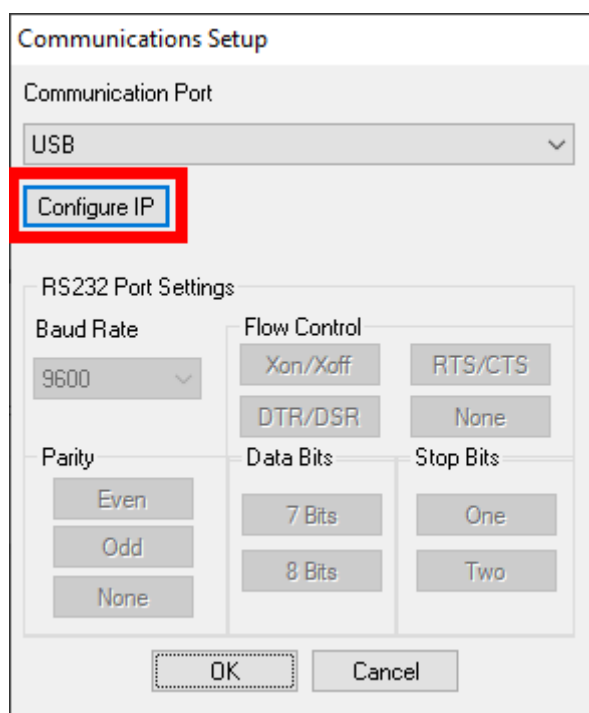


- Click [OK] again to finalize the configuration.

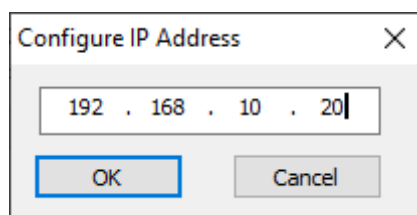
Network Port

To configure *WinPlot* for use of a network port with a Summa Cutter do the following:

- Click on [Configure IP].



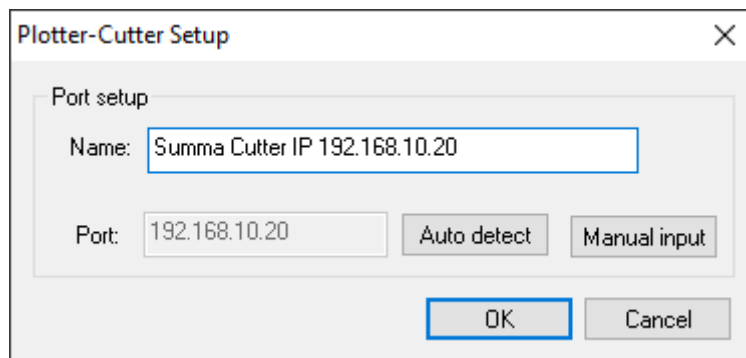
- Fill in the IP address as set in the cutter.



- Click [OK] to confirm.

The IP address will be set in the 'Communication Port' drop down box.

- Clicking the [OK] button returns you to the *Plotter-Cutter Setup* dialog. There you can optionally change the name of the installed cutter.



- Click [OK] to finalize the configuration.


Plug-ins

There exists also a *plug-in* for Corel 12->2021 and Illustrator CC->2021

These gets rid of the hassle to export a job from the designing software, and importing the job in GoSign or WinPlot.

Download for GoSign

The *plug-in* can be installed from the software tool Summa GoSign Tools, which is available from the support page on the Summa website.


 Summa GoSign Tools	Software bundle for Summa Roll Cutter Series and GoSign.	1.2.0	14-06-2022
	<ul style="list-style-type: none"> > Plug-in and template for CorelDRAW X5-2022, Illustrator CC-CC2022 > CorelDRAW Automation Support (VSTA,VBA), Macro Manager is required 		



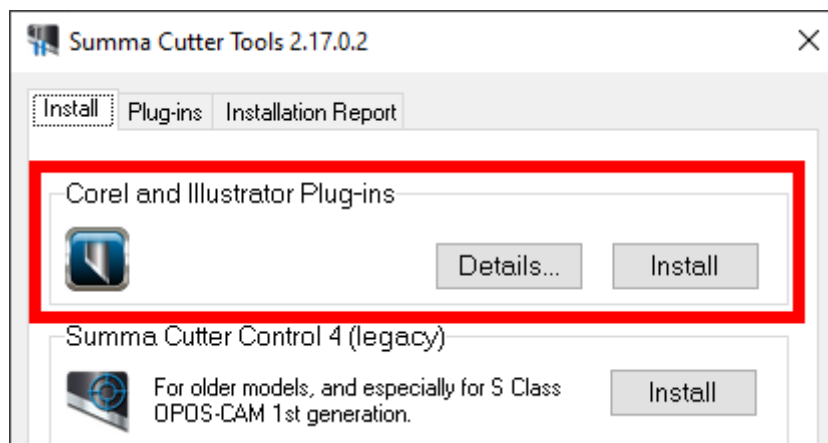
Download for WinPlot

The *plug-in* can be installed from the software tool Summa Cutter Tools, which is available from the support page on the Summa website:

<https://www.summa.com/en/support/software-firmware/>

 Summa Cutter Tools	Software bundle including all cutting related tools including: > Summa Cutter Control 4.20.0.0 Software interface for adjusting parameters on Summa legacy cutter, including speed, mode, pressure, blade offset and much more. Supports Vista/Win 7/Win 8/10 > Plug-in for CorelDRAW 12 - 2022 and Adobe Illustrator CS - CC 2022 Plug-in for CorelDRAW & Illustrator to use with Winplot 6.6 or higher.	2.18	21-03-2022
---	---	------	------------


Close the design software, then click on the [Install] button to have the plug-ins installed for the supported versions of CorelDRAW and/or Adobe Illustrator:




Keep in mind not all versions of CorelDRAW support plug-ins: only the Graphics Suite supports plug-ins:

CorelDRAW®

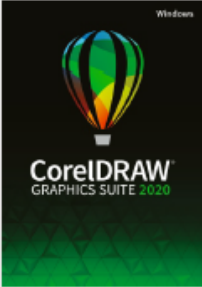
Product Family Comparison



For occasional graphics users and creative consumers



For graphics hobbyists and home businesses



For graphics professionals in small to large businesses

Main Applications			Most Popular
CorelDRAW® 2020	✓* CorelDRAW Essentials 2020	✓* CorelDRAW Standard 2020	✓
Corel PHOTO-PAINT™ 2020		✓* Corel PHOTO-PAINT Standard 2020	✓
Corel Font Manager™ 2020			✓
CAPTURE™			✓
CorelDRAW.app™			✓
Corel AfterShot™ 3 HDR			✓
Key Features & Tools (Highlights)			
Bitmap-to-vector tracing	(✓) Quick Trace (one-click tracing)	✓ PowerTRACE™	✓ PowerTRACE™ (Advanced with AI technology)
Bevel tool, Shadow tool, Spiral, Smooth and Smear tool		✓	✓
Clone Tool, Artistic Media		✓	✓
Alignment guides, Guidelines docker		✓	✓
Symmetry drawing mode, Block Shadow tool, Impact tool, Pointillizer, PhotoCocktail			✓
Object styles, Color styles, Color harmonies			✓
Professional Print options (CMYK features, Composite, Color separations, Postscript, Prepress tabs, large print preview)			✓
Advanced page layout: left & right master pages, custom placeholder text			✓
Enhanced Color management, Color proofing option, spot color support on output			✓
Collaboration tools**			✓
Automation support (VSTA, VBA), Macro Manager			✓

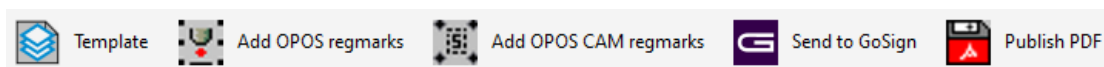
Once the plug-in is installed, the design can be sent to GoSign or WinPlot from the toolbar (CorelDRAW) or from the File submenu (Adobe Illustrator):

CorelDRAW

Five options are available for GoSign:

- Create a new design using a template containing the pre-configured layers
- Add OPOS registration marks (squares of 3 mm) around the design
- Add OPOS-CAM registration marks (circles of 5 mm) around the design
- Send the design (or selected objects) to GoSign
- Export the design to the PDF format

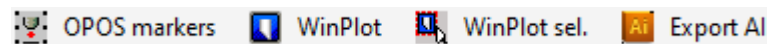
This option can be used when GoSign is not installed on the computer used to create the design.



Four options are available for WinPlot:

- Add OPOS registration marks (squares of 3 mm) around the design
- Send the design to WinPlot
- Send the selected objects to WinPlot
- Export the design to the AI format

This option can be used when WinPlot is not installed on the computer used to create the design.



Adobe Illustrator

Four options are available for GoSign:

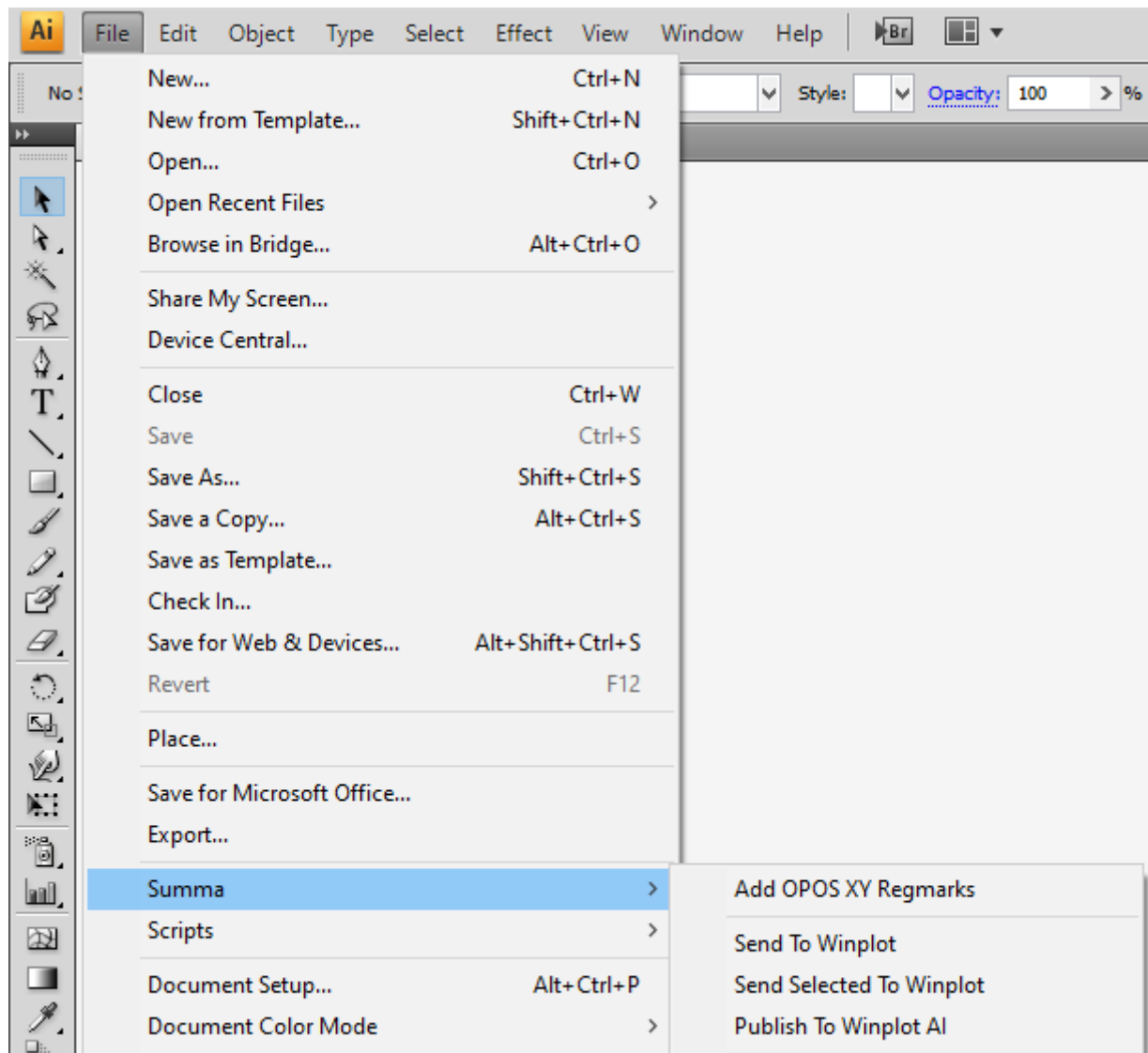
- Create a new design using a template containing the pre-configured layers
- Add OPOS registration marks (squares of 3 mm) around the design
- Add OPOS-CAM registration marks (circles of 5 mm) around the design
- Send the complete design to GoSign

Four options are available for WinPlot:

- Add OPOS registration marks (squares of 3 mm) around the design
- Send the complete design to WinPlot
- Send the selected objects to WinPlot

- Export the design to the AI format

This option can be used when WinPlot is not installed on the computer used to create the design.

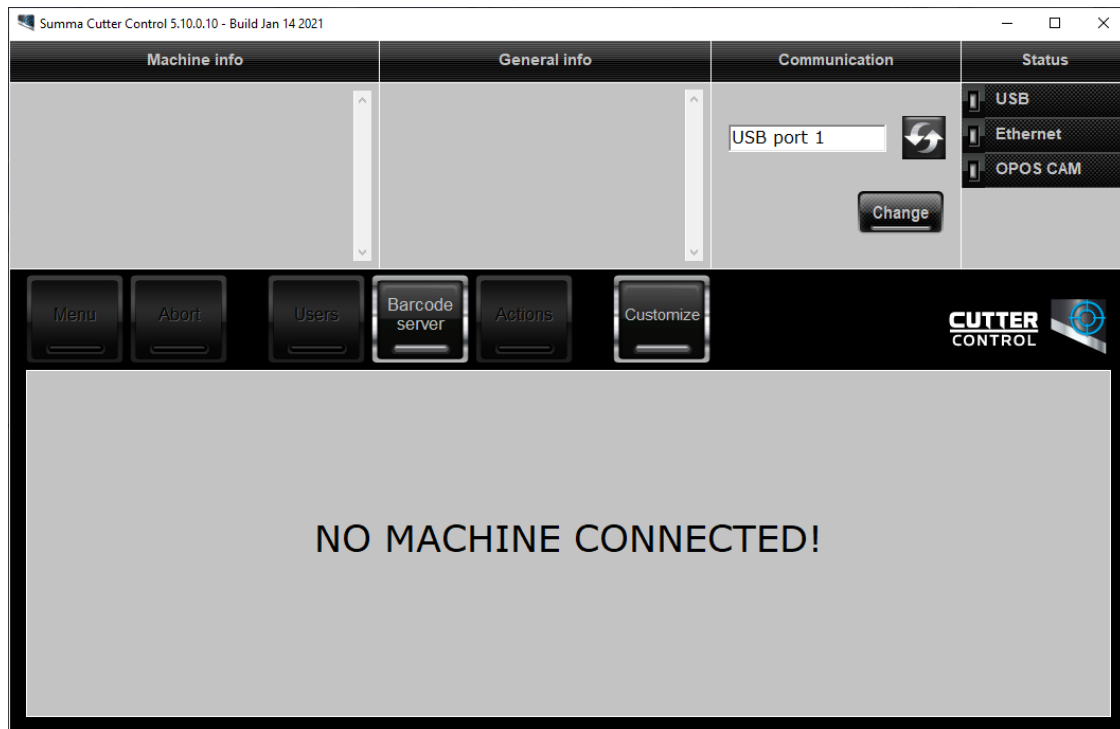


Summa Cutter Control 5

The Summa Cutter Control program basically has the same functions as the control panel.


The program Summa Cutter Control 5 can be used to:

- Control all parameters of the cutter.
- Create and restore a backup containing all configurations of the cutter.
- Perform tests.
- Send files to the cutter.
- Upgrade the firmware of the cutter.
- Work as a barcode server.



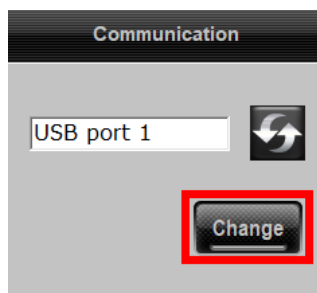
Summa Cutter Control 5 is available from the support page of the Summa website:

<https://www.summa.com/en/support/software-firmware/>

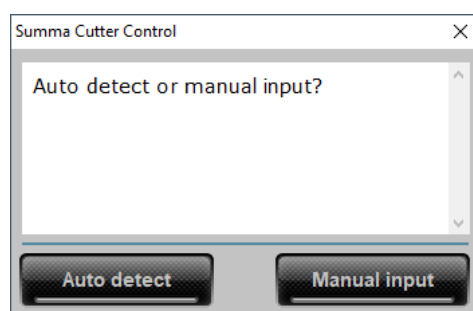
 Summa Cutter Control 5	Summa Cutter Control 5 is a software interface for adjusting parameters on current Summa Roll cutters, including speed, mode, blade offset and much more. Support Windows OS only (Win 7/8/10/11)	5.11.0
---	--	---------------

Before the program can be used, the communication interface needs to be selected and configured to match the connection type (USB or Network).

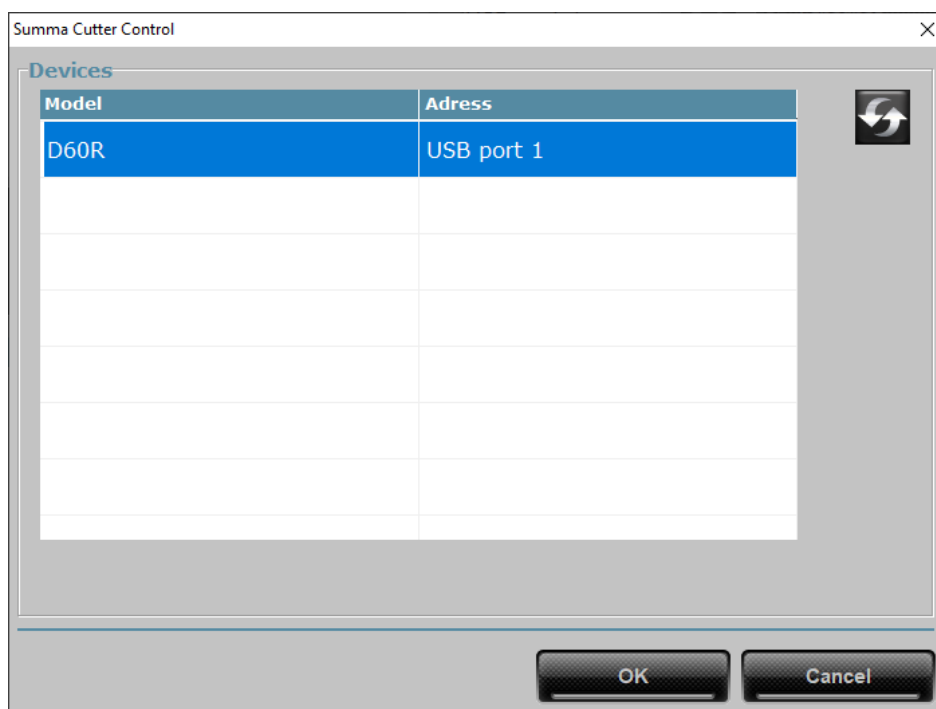
Click on [Change] in the 'Communication' pane to select the communication interface.



Then click on [Auto] to get a list of connected cutters to the computer or on the network, or click [Manual] to enter the IP address of the cutter.



When "Auto" was used, then select the cutter from the list.



In case “Manual” was sued, then enter the IP address of the cutter.



A screenshot of a software dialog box titled "Summa Cutter Control". The dialog box has a close button (X) in the top right corner. Inside, there is a text area with the prompt "Please enter device IP adress." Below this is a text input field containing the IP address "192.168.010.020". At the bottom of the dialog box are two buttons: "OK" and "Cancel".

Revised June 15, 2022