

## How to install a driver for a S Class 2 with OPOS-CAM

---



### Introduction

This document describes how to install the software necessary to drive the an S Class 2 OPOS-CAM series roll-cutter.

---

**Note:** We do not work with a 'Windows based printer driver'.

---

A **design software** is needed to create a design. Popular design programs are CorelDRAW, Adobe Illustrator, Inkscape, ... Design software is not supplied from Summa.

The contours in the job created with one of those design software's need to be sent to the cutter. Before the contours can be sent, the contours need to be converted in commands understood by the cutter (DM/PL or HP-GL commands). This is accomplished by the software **GoSign**. WinPlot then needs to send the commands to the cutter using a communication port. Depending on the communication interfaces available, and/or the interface used to drive the cutter, different **driver software** needs to be installed.

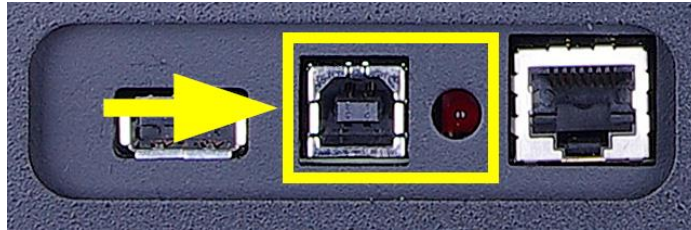
Transferring the job from the design software to the cutting software can be done by means of a **plug-in**.

For GoSign to work with an S Class 2 roll cutter, firmware revision 25 or later is required.

The camera captures images of the registration marks. Those images are then processed by Summa Cutter Control 5, or by GoSign having the Pro Pack activated.

## Driver software

### USB Interface



### USB Cutter Driver install

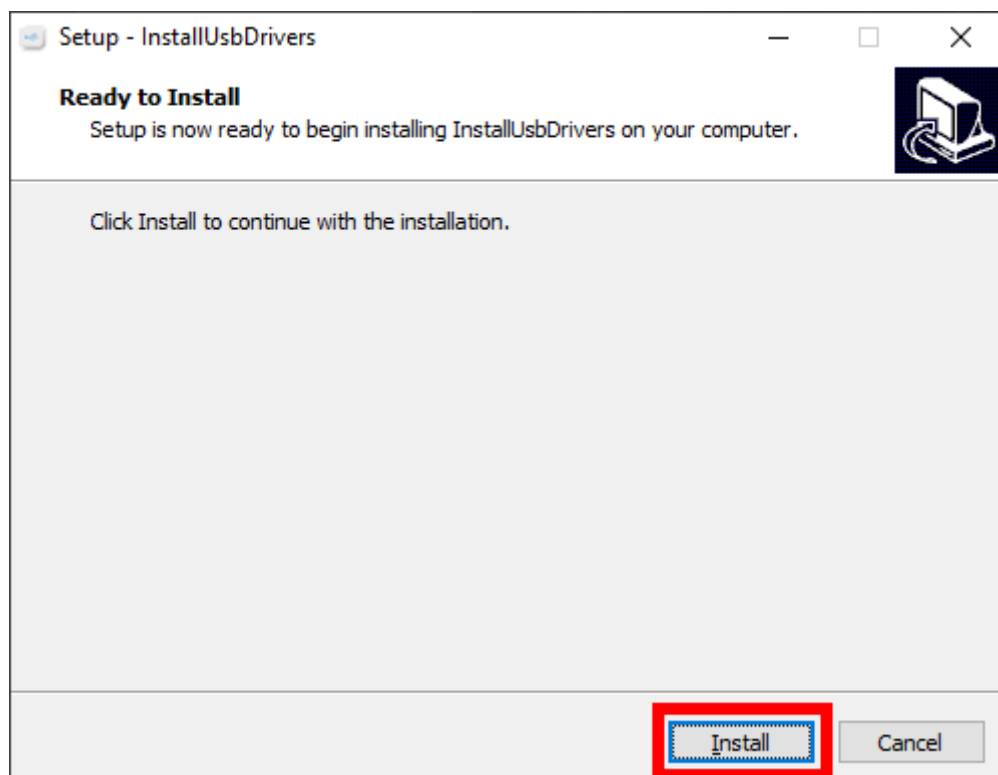
To be able to use the USB interface, a USB driver needs to be installed. This driver is available from the support page of the Summa website:

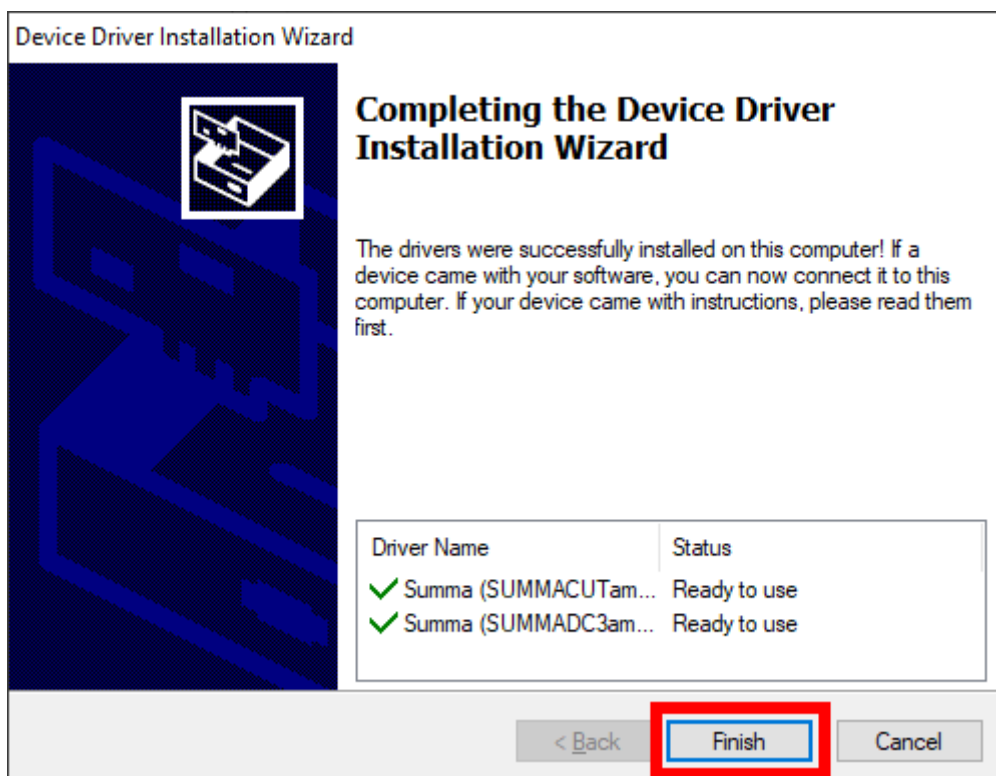
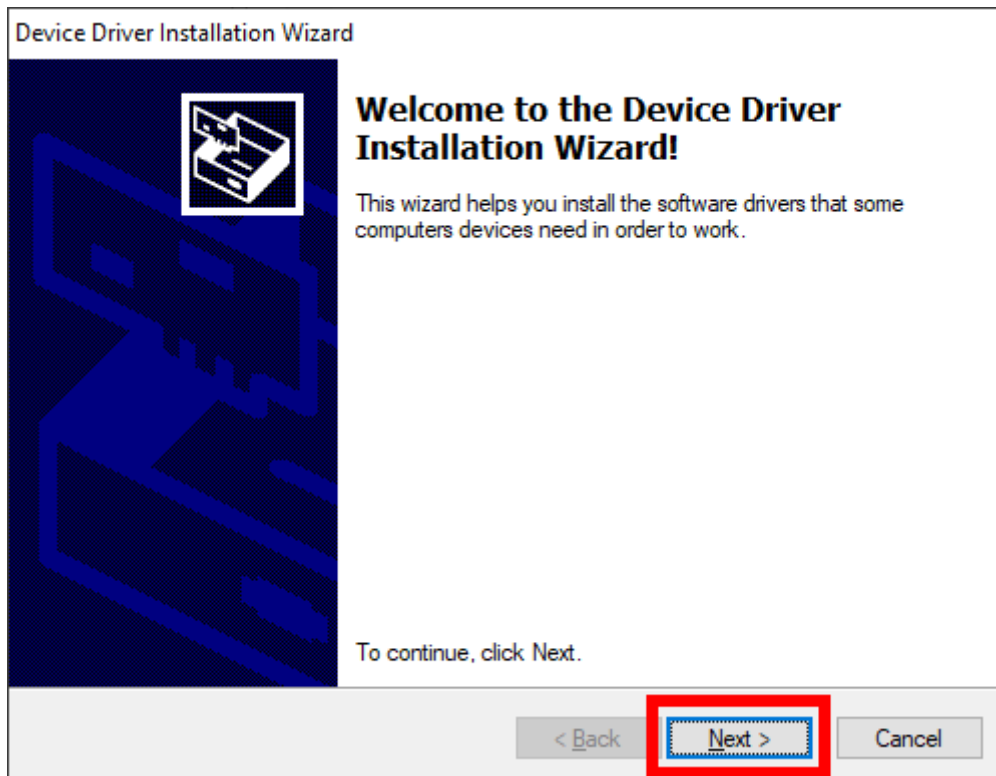
<https://www.summa.com/en/support/software-firmware/>

### Vinyl Cutters

USB Drivers	Description	Version	Date
 <b>USB Cutter driver</b>	USB driver for Windows 7, 8, 8.1, 10, 11	10.0 & 7.0	18-06-2020
 <b>OPOS-CAM USB driver</b>	USB Camera driver for Windows 7, 8, 8.1, 10, 11	1.0.136	08-05-2014

Download the USB driver. Double click on the downloaded driver to start the install process. Follow the install wizard to complete the install.







In the software driving the machine, the communication port used to send the data to the cutter needs to be set to the USB port.

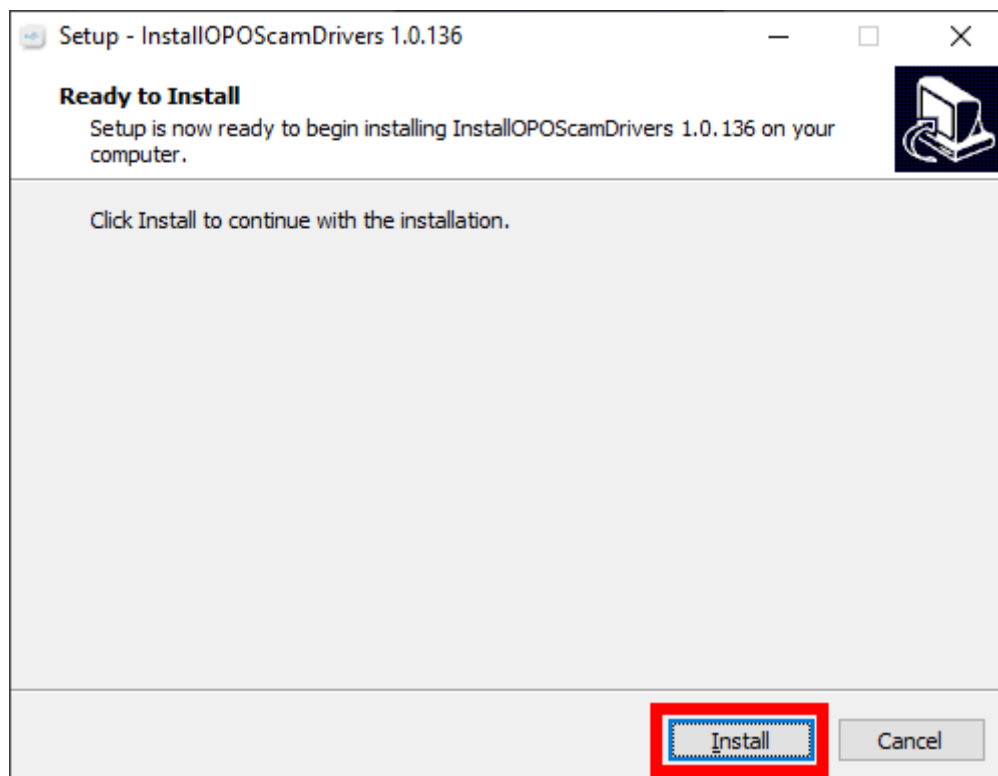
## USB Camera Driver Install

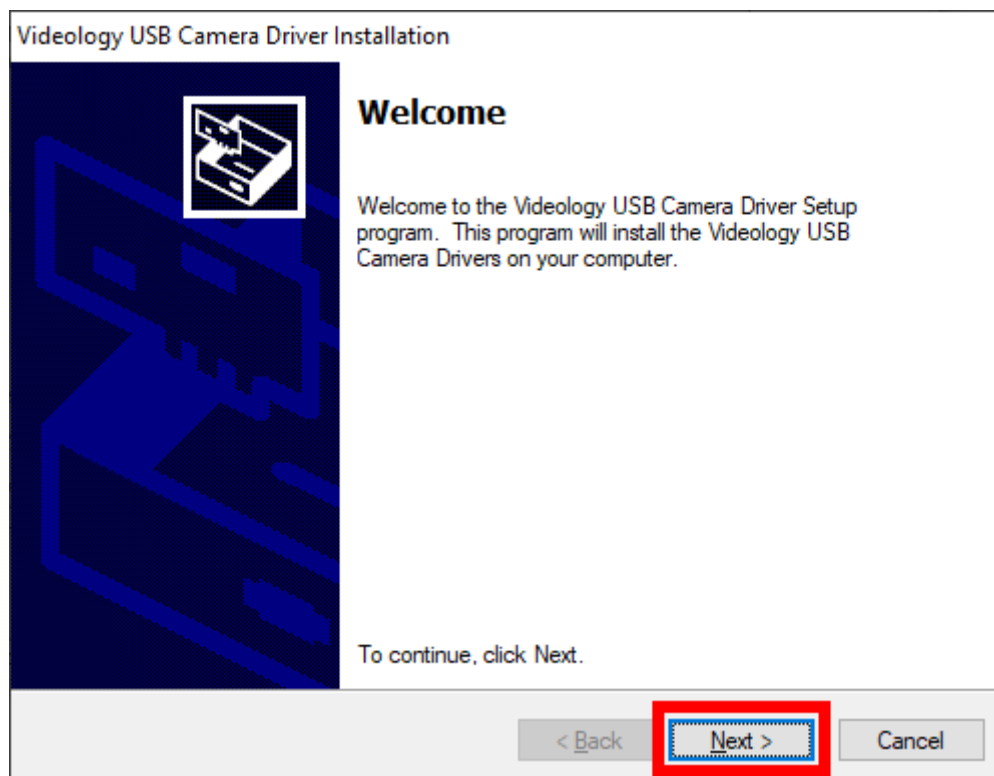
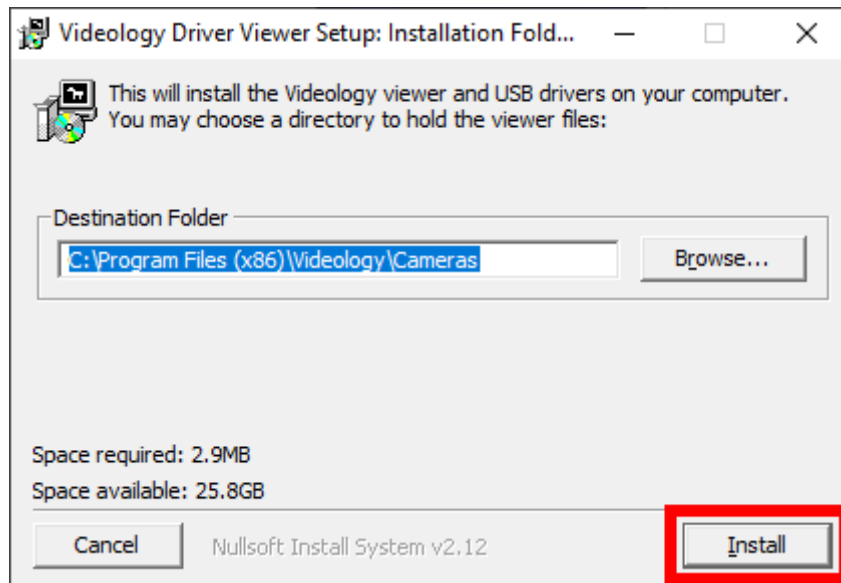
The cutter has a camera which is used to capture a picture of the registration marks. This picture is then processed by Summa Cutter Control or GoSign (requires the Pro Pack). As the camera uses a USB interface, the USB driver for the camera needs to be installed, which is available from the Summa website:

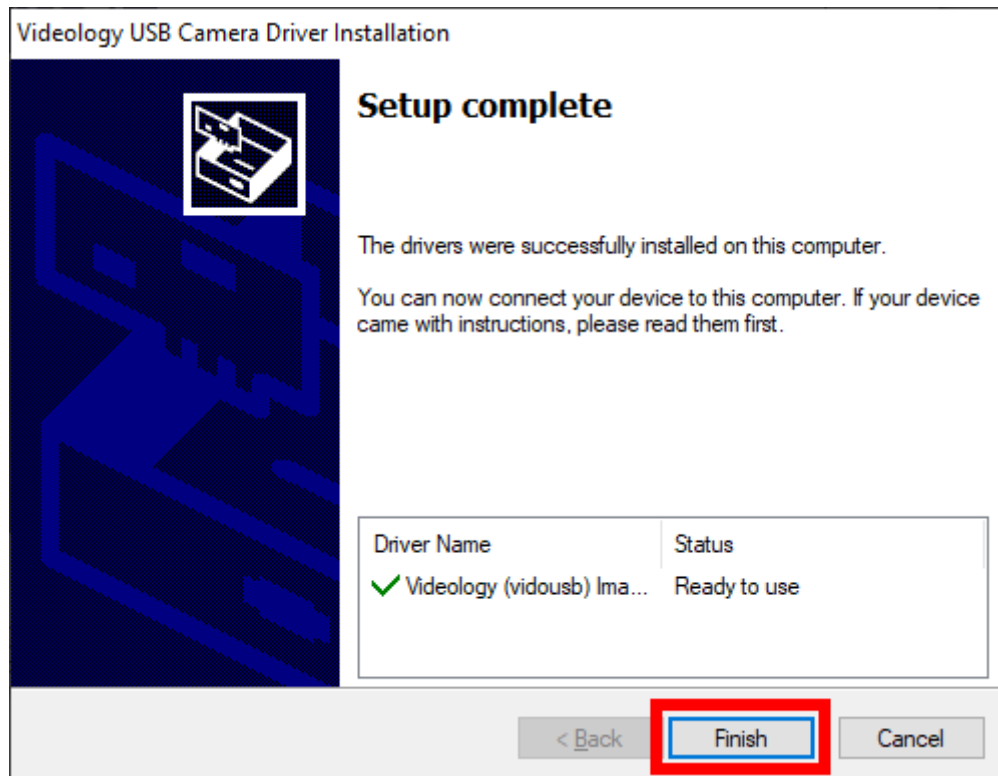
<https://www.summa.com/en/support/software-firmware/>

USB Drivers	Description	Version	Date
 <b>USB Cutter driver</b>	USB driver for Windows 7, 8, 8.1, 10, 11	10.0 & 7.0	18-06-2020
 <b>OPOS-CAM USB driver</b>	USB Camera driver for Windows 7, 8, 8.1, 10, 11	1.0.136	08-05-2014

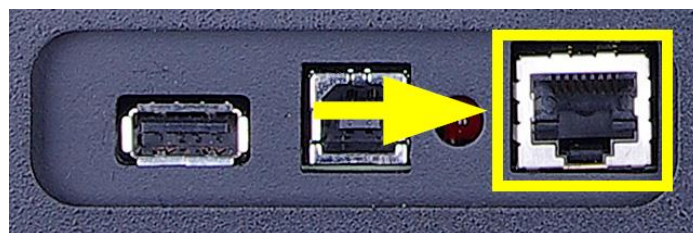
Download the USB driver. Double click on the downloaded driver to start the install process. Follow the install wizard to complete the install.







## Network Interface



When the cutter is connected using the network interface, you do not need a driver, you have to set the correct settings in the cutting software.

## Network Configuration of the Cutter

It is not necessary to load media in the cutter to change the parameters.


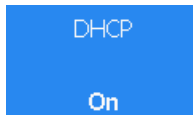
Use the below steps to change the network parameters of the cutter:

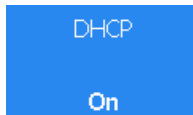
- Power on the cutter.

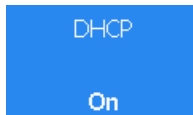
- Click the  button. 

- Click the  button.




- Click the  button.
- Click the  button.



- Click the  button.
- Choose between “No” (static IP address) or “Yes” (dynamic IP address). A static IP address is preferred to prevent the IP address of the cutter to change due to the DHCP server lease time settings.

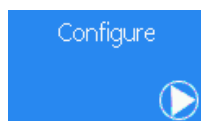


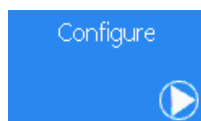
- Press  to confirm the selection.




- When DHCP = On was selected, then press  to return to set the machine back online.

In case DHCP = Off was selected, then an IP address has to be entered.




- Click the  button.
- Click on the IP address. Change the IP address using the numeric keypad. Confirm when done.
- Click the subnet mask. Change the subnet mask using the numeric keypad. Confirm when done.

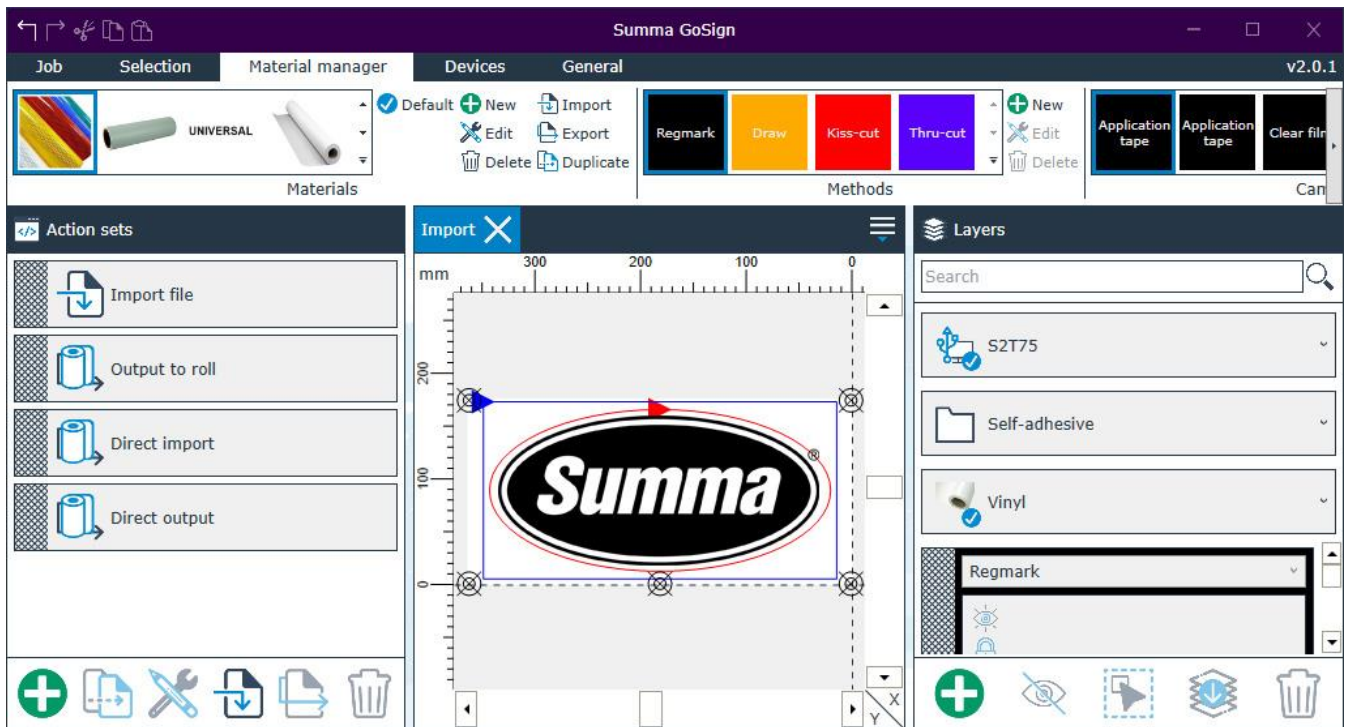


- Press  to confirm the new IP address and subnet mask.



- Press  to return to set the machine back online.

## GoSign



---

**Note:** The firmware of the machine has to be at least revision 025 to be able to work with GoSign 2.1. In case the firmware is on a lower level, then an upgrade of the firmware is required.


---

This program can import PDF, DXF, OXF and SGP files and then send data to the cutter. Most design programs are able to generate files in one of those formats.

We do not work with a 'Windows based printer driver'.

The program *GoSign* can be downloaded from the Summa support website:

<https://www.summa.com/en/support/software-firmware/>

 <b>Summa GoSign V2</b>	Unleash the full potential of your Summa vinyl cutter with the GoSign 2.3.0.	2.3.0	14-06-2022
<p>GoSign is a Windows-based production tool, acting as a bridge between the design software and a Summa Roll Cutter. It allows you to manage your preferred workflow with great flexibility. Enjoy automated cutting options, custom configuration of action sets, easy plug-ins for design programs and much more.</p> <p>Windows 7 (Professional - Enterprise)/8 (Professional - Enterprise)/ 8.1 (Professional - Enterprise)/10 (Professional - Enterprise)/11 (Professional - Enterprise) 32-bit &amp; 64-bit</p> <p>With the latest updates and Service Pack</p> <p>GoSign is to be used with Summa vinyl cutters SummaCut R(L) (firmware rev039 or higher), S Class 2 (firmware rev024 or higher) and S One (firmware rev005 or higher).</p> <p><b>Discover the Pro Pack with a free 30-day trial by registering during setup.</b></p>			

This program works as a 'cutter driver', and converts the design created and exported in one of the supported formats in commands understood by the cutter.

The manual with the detailed instruction how to use GoSign can be downloaded from the manuals section of the support page on the Summa website.

## Configuration

On first start of GoSign, a dialog box is presented showing the cutters connected to the computer using the USB port, or found on the network the computer is connected to.

**Summa GoSign - Device**

Name:

Address:


Device family:

Device model:

Device serial number:

Auto detect **Manual input**

Address	Device model	Device serial number
USB 1	?	?
192.168.11.116	?	?
192.168.11.15	?	?
192.168.11.26	?	?

 Please check if the device is online and ready.

For GoSign to be able to query the info needed from the cutter, media needs to be loaded. Load media in the cutter(s), and click the [Search] button.

**Summa GoSign - Device**

Name:

Address:

Device family:

Device model:

Device serial number:

Auto detect **Manual input**


Address	Device model	Device serial number
USB 1	S2T75	1111-1111
192.168.11.26	S2T120	1111-1111
192.168.11.116	?	?
192.168.11.15	?	?

Select from the list of connected cutters the one GoSign has to drive, and click [OK].

## Plug-ins

There exists also a *plug-in* for Corel 12->2021 and Illustrator CC->2021

The *plug-in* can be installed from the software tool Summa GoSign Tools, which is available from the support page on the Summa website.

 <b>Summa GoSign Tools</b>	Software bundle for Summa Roll Cutter Series and GoSign.  > Plug-in and template for CorelDRAW X5-2022, Illustrator CC-CC2022 > <b>CorelDRAW Automation Support (VSTA,VBA), Macro Manager is required</b>	1.2.0	14-06-2022
-------------------------------------------------------------------------------------------------------------	--------------------------------------------------------------------------------------------------------------------------------------------------------------------------------------------------------------------	-------	------------

These gets rid of the hassle to export a job from the designing software, and importing the job in GoSign.


Close the design software, then click on the [Install] button to have the plug-ins installed for the supported versions of CorelDRAW and/or Adobe Illustrator.




Keep in mind not all versions of CorelDRAW support plug-ins: only the Graphics Suite supports plug-ins:

## CorelDRAW®

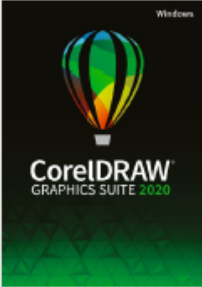
### Product Family Comparison



For occasional graphics users and creative consumers



For graphics hobbyists and home businesses



For graphics professionals in small to large businesses

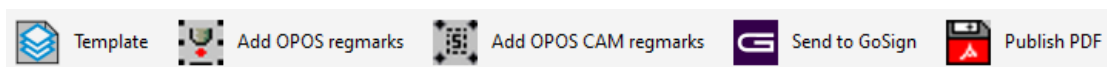
Main Applications			Most Popular
CorelDRAW® 2020	✓* CorelDRAW Essentials 2020	✓* CorelDRAW Standard 2020	✓
Corel PHOTO-PAINT™ 2020		✓* Corel PHOTO-PAINT Standard 2020	✓
Corel Font Manager™ 2020			✓
CAPTURE™			✓
CorelDRAW.app™			✓
Corel AfterShot™ 3 HDR			✓
Key Features & Tools (Highlights)			
Bitmap-to-vector tracing	(✓) Quick Trace (one-click tracing)	✓ PowerTRACE™	✓ PowerTRACE™ (Advanced with AI technology)
Bevel tool, Shadow tool, Spiral, Smooth and Smear tool		✓	✓
Clone Tool, Artistic Media		✓	✓
Alignment guides, Guidelines docker		✓	✓
Symmetry drawing mode, Block Shadow tool, Impact tool, Pointillizer, PhotoCocktail			✓
Object styles, Color styles, Color harmonies			✓
Professional Print options (CMYK features, Composite, Color separations, Postscript, Prepress tabs, large print preview)			✓
Advanced page layout: left & right master pages, custom placeholder text			✓
Enhanced Color management, Color proofing option, spot color support on output			✓
Collaboration tools**			✓
Automation support (VSTA, VBA), Macro Manager			✓

Once the plug-in is installed, the design can be sent to WinPlot from the toolbar (CorelDRAW) or from the File submenu (Adobe Illustrator):

## CorelDRAW

Five options are available:

- Create a new design using a template containing the pre-configured layers
  - Add OPOS registration marks (squares of 3 mm) around the design
  - Add OPOS-CAM registration marks (circles of 5 mm) around the design
  - Send the design to GoSign
  - Export the design to the AI format
- This option can be used when GoSign is not installed on the computer used to create the design.



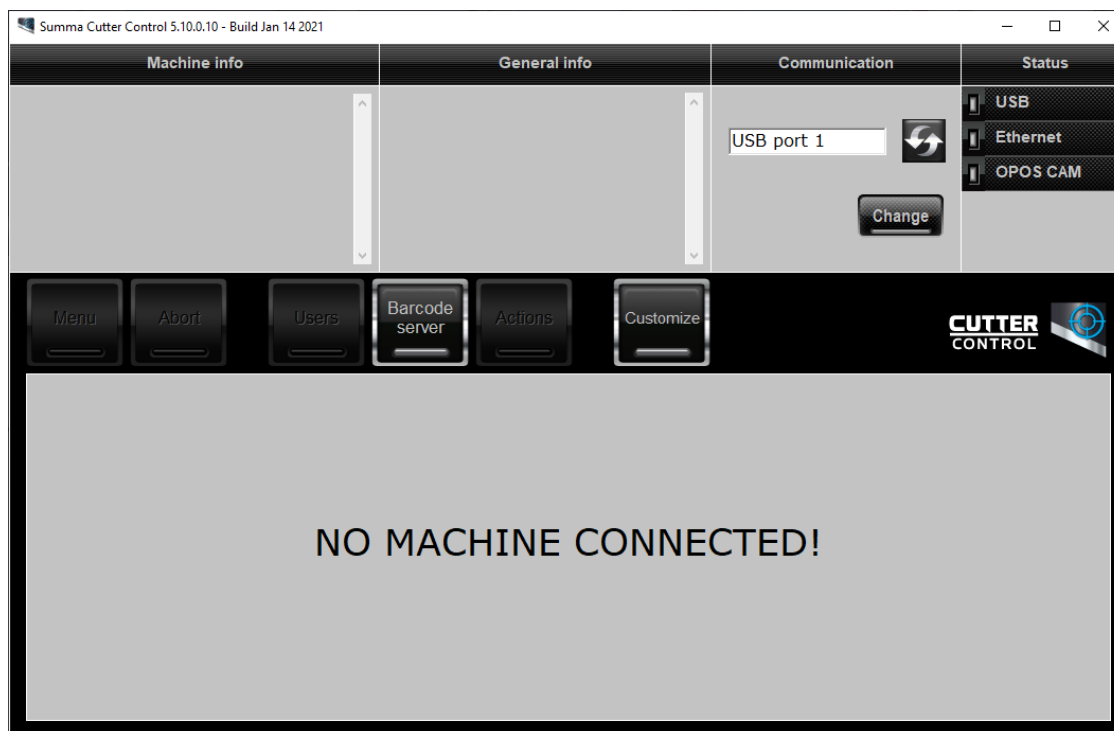
## Adobe Illustrator

Four options are available:


- Create a new design using a template containing the pre-configured layers
- Add OPOS registration marks (squares of 3 mm) around the design
- Add OPOS-CAM registration marks (circles of 5 mm) around the design
- Send the complete design to GoSign

## Summa Cutter Control 5

The Summa Cutter Control program basically has the same functions as the control panel.



The program *Summa Cutter Control 5* can be downloaded from the Summa support website:  
<https://www.summa.com/en/support/software-firmware/>

	<b>Summa Cutter Control 5</b>	<b>Summa Cutter Control 5</b> is a software interface for adjusting parameters on current Summa Roll cutters, including speed, mode, blade offset and much more. Support Windows OS only (Win 7/8/10/11)	5.11.0
-------------------------------------------------------------------------------------	-------------------------------	----------------------------------------------------------------------------------------------------------------------------------------------------------------------------------------------------------	--------

The program Summa Cutter Control 5 can be used to:

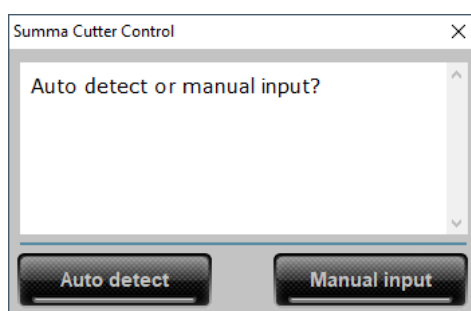
- Control all parameters of the cutter.
- Create and restore a backup containing all configurations of the cutter.
- Perform tests.
- Send files to the cutter.
- Upgrade the firmware of the cutter.
- Work as a barcode server.
- Process the images of the OPOS registration marks from the camera.

Before the program can be used, the communication interface needs to be selected and configured to match the connection type (USB or Network).

Click on [Change] in the 'Communication' pane to select the communication interface.



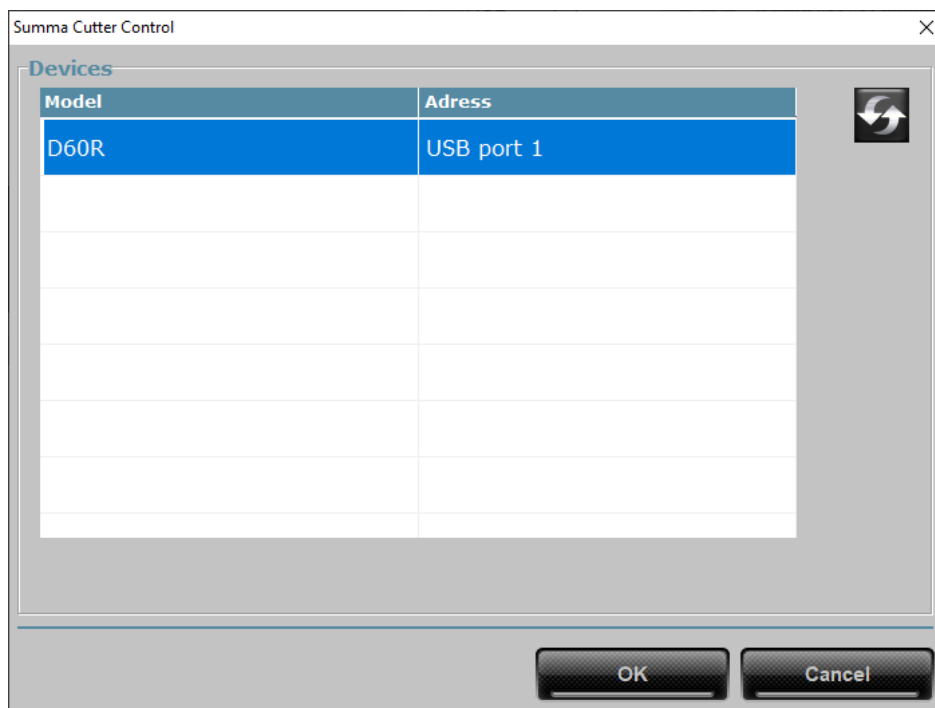
Then click on [Auto] to get a list of connected cutters to the computer or on the network, or click [Manual] to enter the IP address of the cutter.



Enter the IP address of the cutter.



Or select the cutter from the list.



The image shows a software window titled "Summa Cutter Control". Inside the window, there is a section labeled "Devices" which contains a table with two columns: "Model" and "Adress". The first row of the table is highlighted in blue and contains the text "D60R" under "Model" and "USB port 1" under "Adress". There are several empty rows below this. To the right of the table, there is a circular icon with a double arrow. At the bottom of the window, there are two buttons: "OK" and "Cancel".

Model	Adress
D60R	USB port 1

Revised June 15, 2022