

Creating and restoring a backup

1 Introduction

This procedure describes how to make a backup of all parameters stored in the cutter.

The backup can be used to send to a (Summa) service engineer for examination, or can be used to revert to a known configuration of the cutter.

It is advised to create a backup when installing the machine for the first time and store this data on a safe place. After fine tuning the cutter for the different jobs to be done, another backup can be made.

To make a backup, or to restore a previously made backup, the Windows software Summa Cutter Control 5 is necessary. In case the cutter is connected to the computer using the USB interface, then the USB driver has to be installed.

2 Required tools

2.1 USB driver

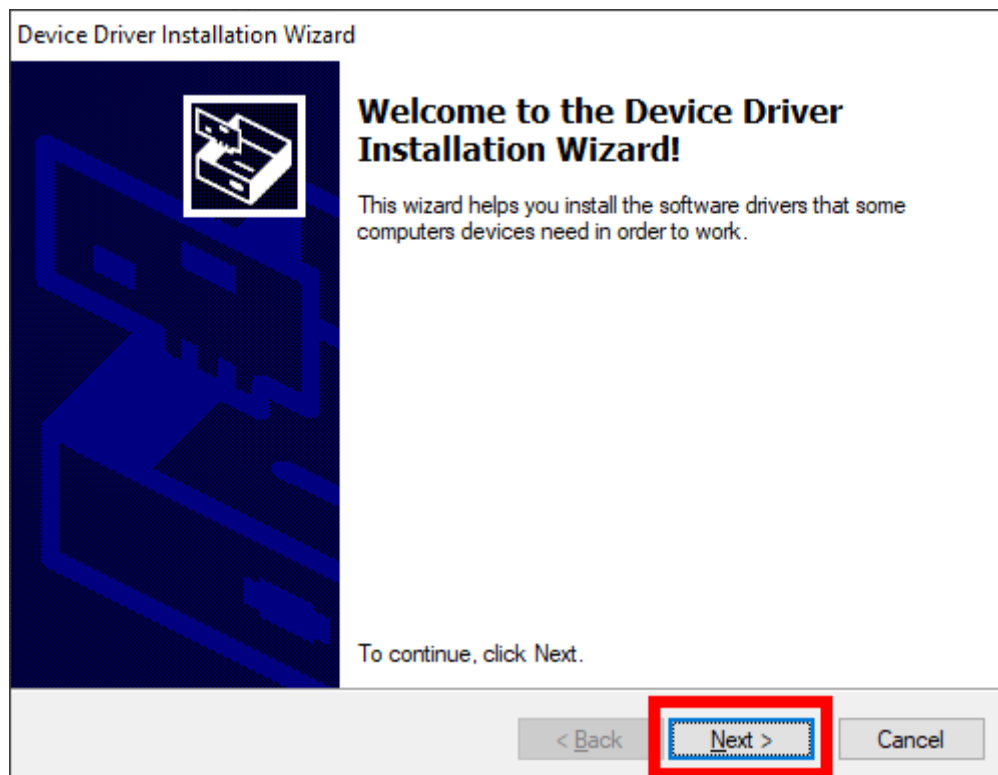
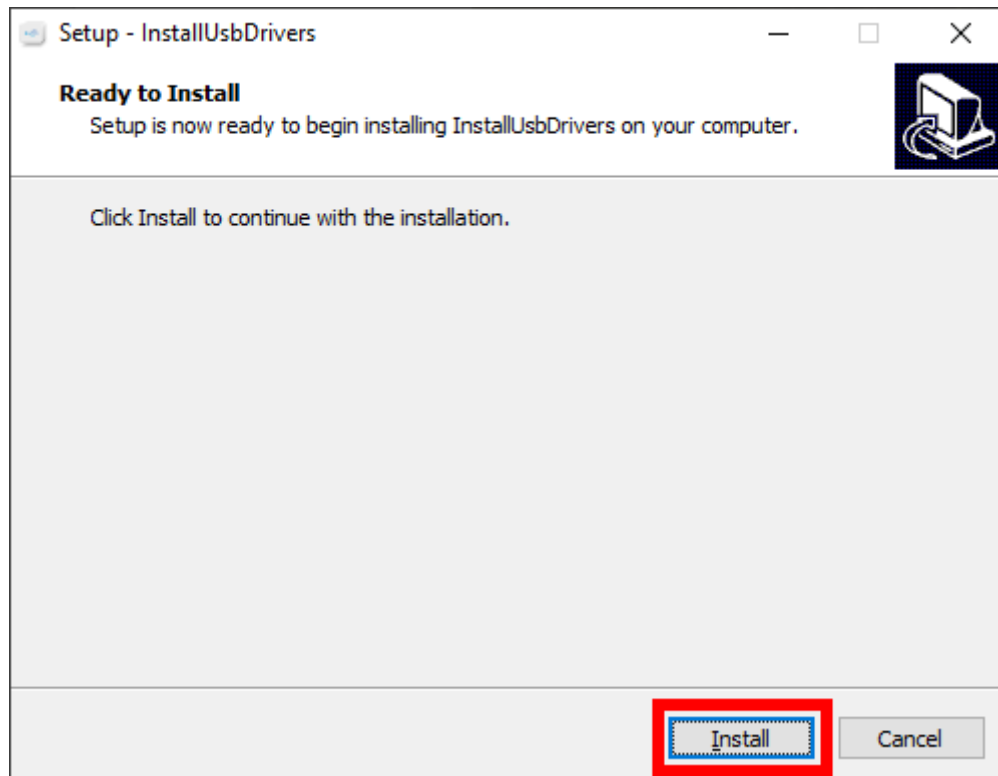
To be able to use the USB interface, a USB driver needs to be installed. This driver is available from the support page of the Summa website:

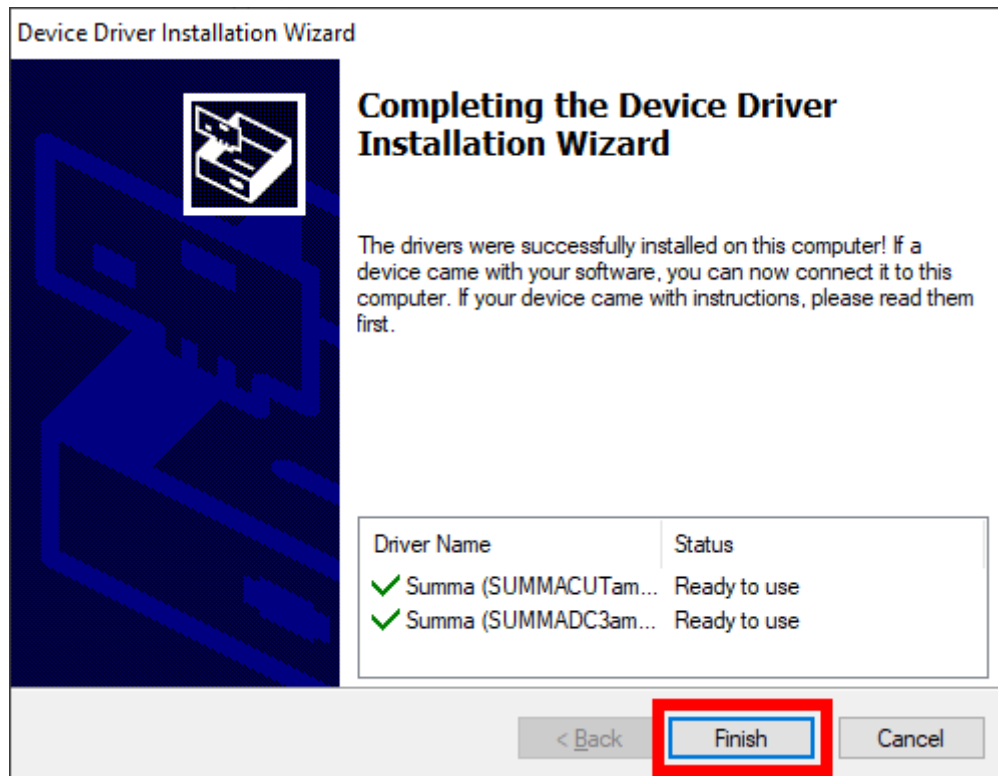
<https://www.summa.com/en/support/software-firmware/>

Vinyl Cutters

USB Drivers	Description	Version	Date
 USB Cutter driver	USB driver for Windows 7, 8, 8.1, 10, 11	10.0 & 7.0	18-06-2020
 OPOS-CAM USB driver	USB Camera driver for Windows 7, 8, 8.1, 10, 11	1.0.136	08-05-2014

Download the USB driver. Double click on the downloaded driver to start the install process. Follow the install wizard to complete the install.



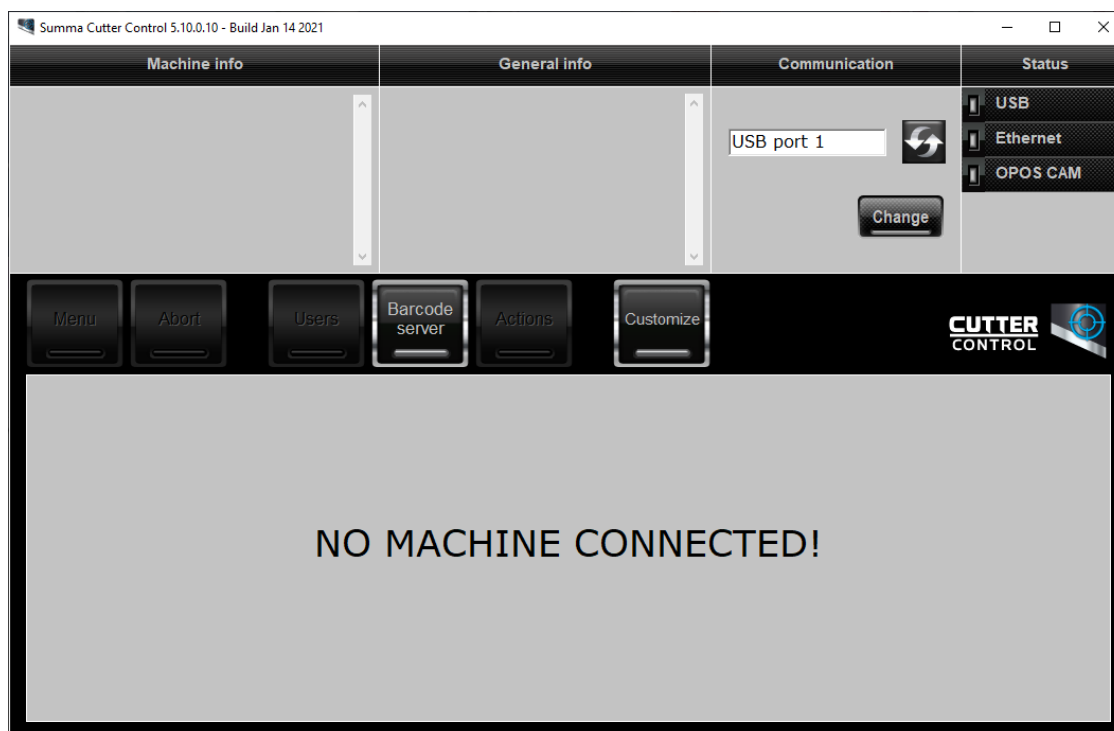


2.2 Summa Cutter Control 5


The Summa Cutter Control program basically has the same functions as the control panel.

The program Summa Cutter Control 5 can be used to:

- Control all parameters of the cutter.
- Create and restore a backup containing all configurations of the cutter.
- Perform tests.
- Send files to the cutter.
- Upgrade the firmware of the cutter.
- Work as a barcode server.

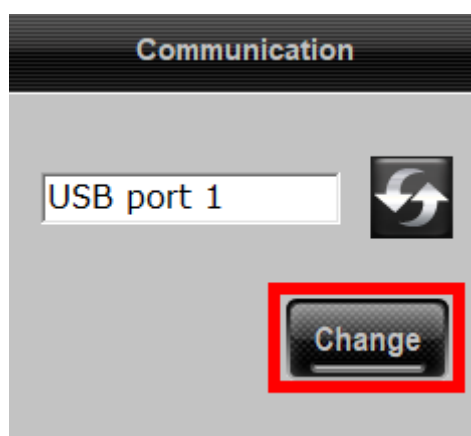


Summa Cutter Control 5 is available from the support page of the Summa website:
<https://www.summa.com/en/support/software-firmware/>

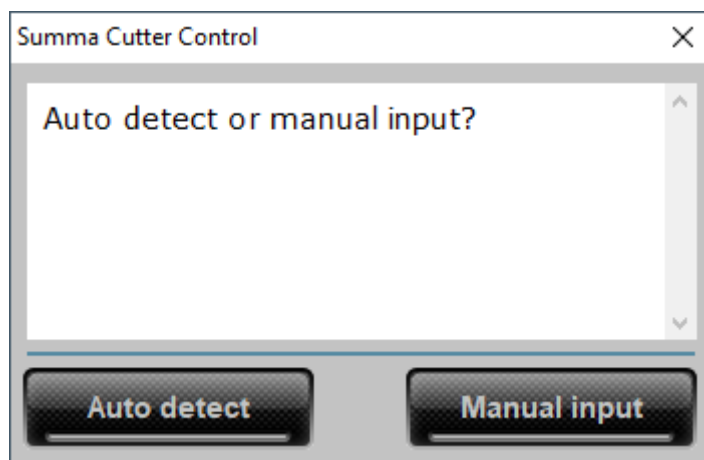
 Summa Cutter Control 5	Summa Cutter Control 5 is a software interface for adjusting parameters on current Summa Roll cutters, including speed, mode, blade offset and much more. Support Windows OS only (Win 7/8/10/11)	5.11.0
---	--	--------

Before the program can be used, the communication interface needs to be selected and configured to match the connection type (USB or Network).

Click on [Change] in the 'Communication' pane to select the communication interface.



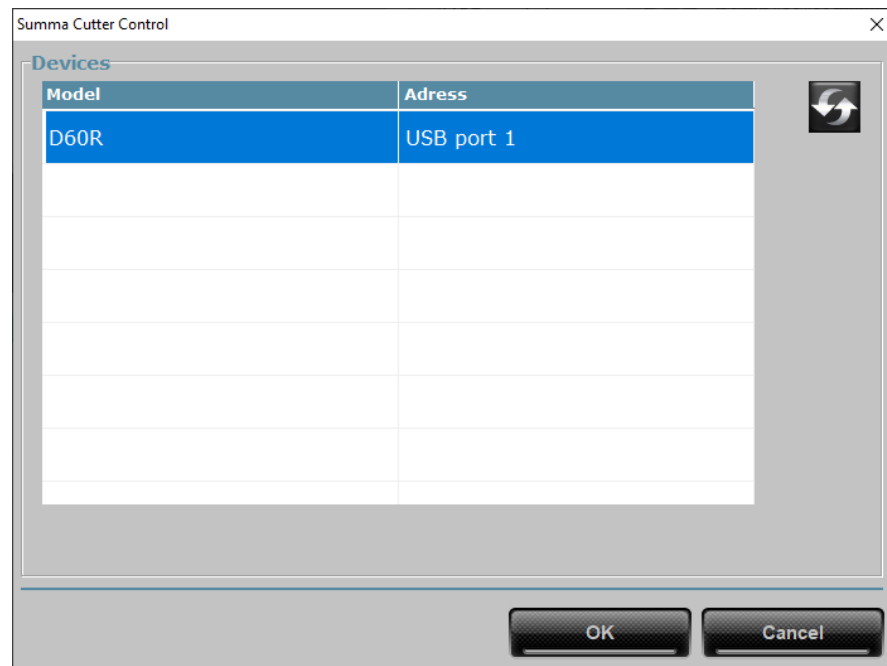
Then click on [Auto] to get a list of connected cutters to the computer or on the network, or click [Manual] to enter the IP address of the cutter.



Enter the IP address of the cutter.



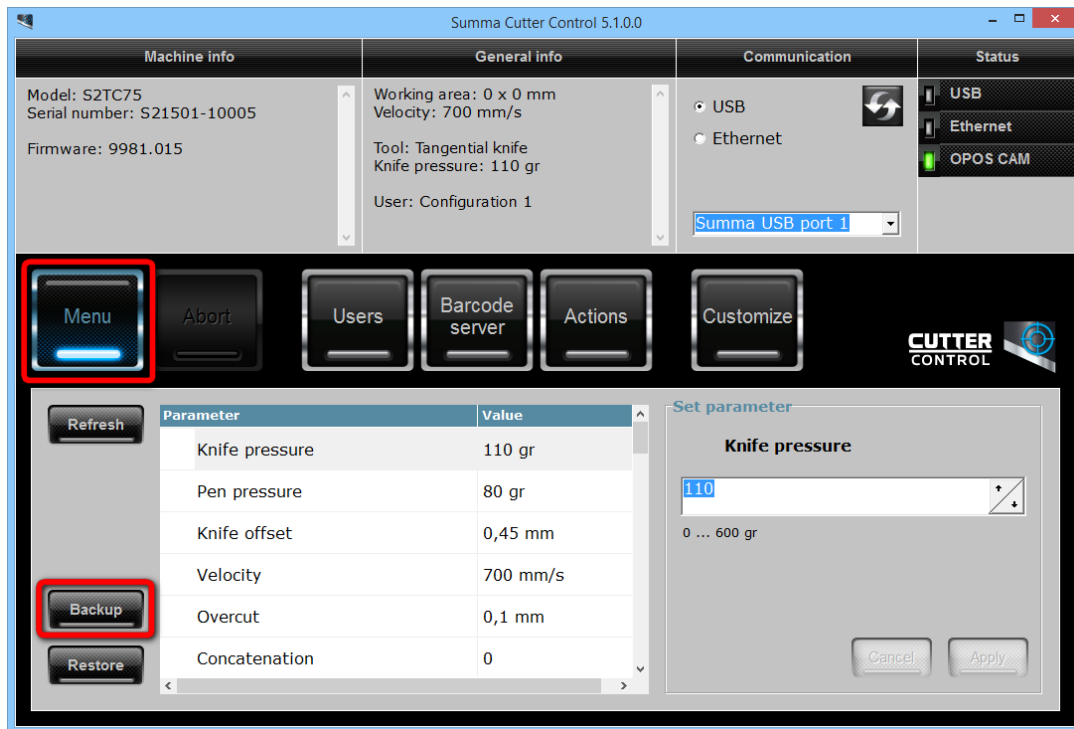
Or select the cutter from the list.



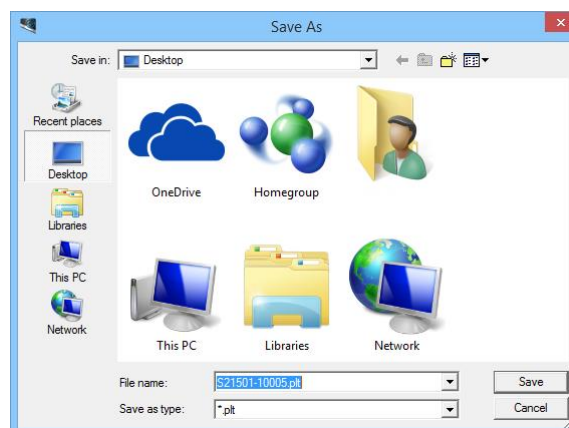
3 Creating a backup

To create a backup, follow the next procedure:

1. Remove all media from the cutter.
2. Switch off the cutter.
3. Power on the cutter. This is to ensure the internal data buffers are cleared and all parameters are set to what is stored in the internal memory of the cutter. Some applications may have changed some parameters to a temporary value.
4. Connect the cutter with the computer using the network cable or the USB cable.
5. Start Summa Cutter Control.
6. Verify the communication settings (USB: port used, or network: IP address) to match the interface used.
7. Click [Menu] – [Backup]



8. Select the folder to where the backup has to be written to and click [Save].



The name used for the backup will be the serial number of the cutter. This name can be altered to satisfy your needs.

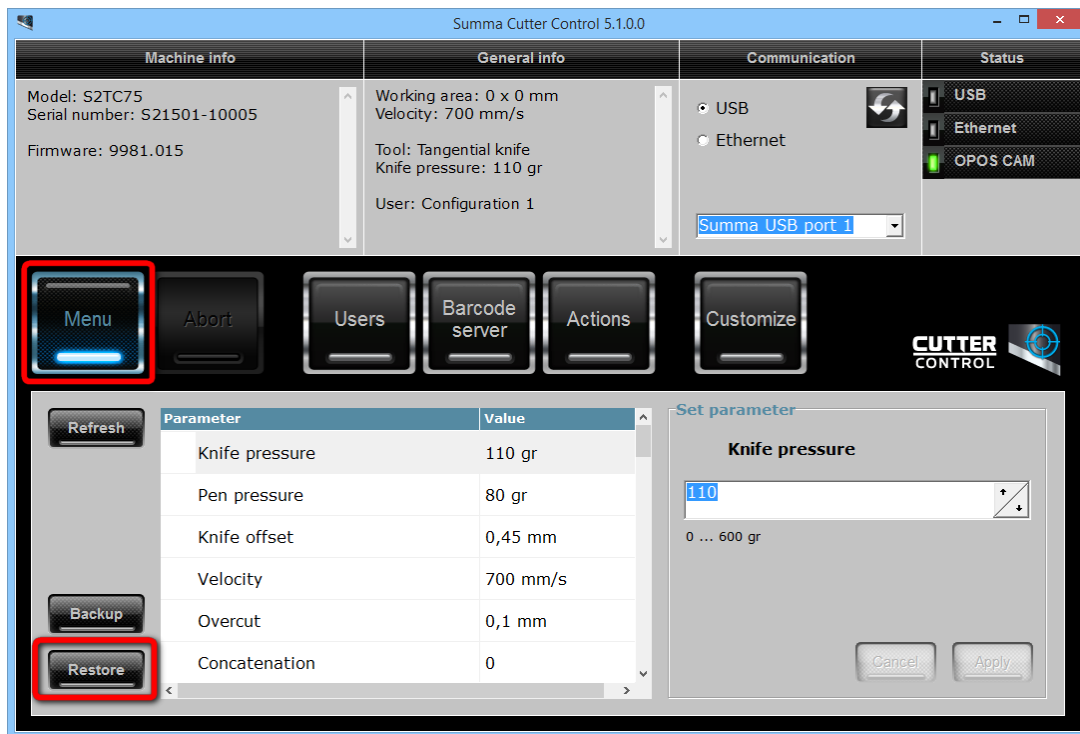
9. Summa Cutter Control will now read all parameters from all user configurations from the cutter and write it to the specified location using the specified name.

4 Restoring a backup

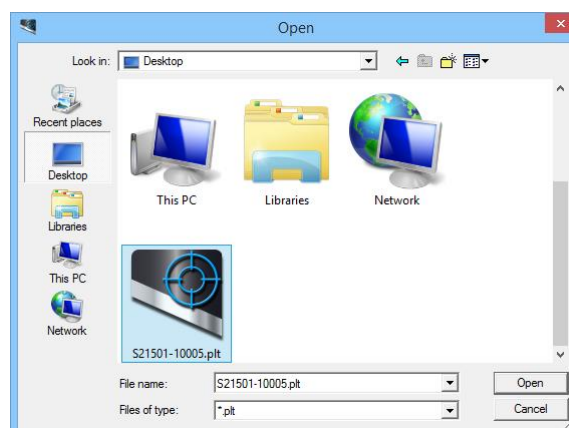
To restore a previously made backup, follow the next procedure:

1. Remove all media from the cutter.
2. Power on the cutter.

3. Connect the cutter with the computer using the network cable or the USB cable.
4. Start Summa Cutter Control.
5. Verify the communication settings (USB: port used, or network: IP address) to match the interface used.
6. Click [Settings] – [Restore]



7. Select the folder to where the backup was written to, select the backup (which is usually the serial number of the cutter) and click [Open].



8. Summa Cutter Control will now overwrite all configurations of the cutter with the values contained in the specified backup.

9. Wait at least 1 minute before switching off the cutter to give the cutter the time to update all user configurations.
10. Restart the cutter.



WARNING: DO NOT RETORE A BACKUP FROM ONE MACHINE TO ANOTHER MACHINE. THE BACKUP CONTAINS MACHINE SPECIFIC CALIBRATION DATA WHICH IS NOT COMPATIBLE WITH THE OTHER MACHINE.

Revised July 6, 2022