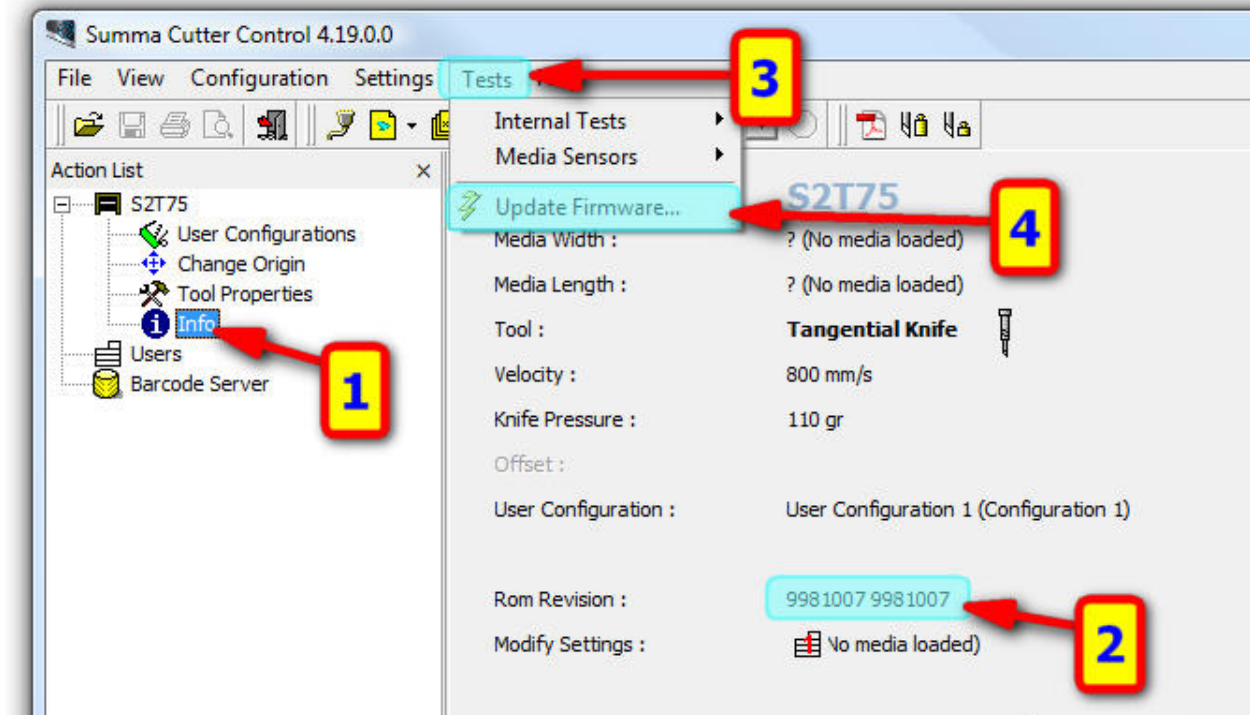


Firmware upgrade on Summa S Class 2

This procedure describes how to upgrade the firmware on a Summa S Class 2 cutter.

CHECK CURRENT FIRMWARE VERSION

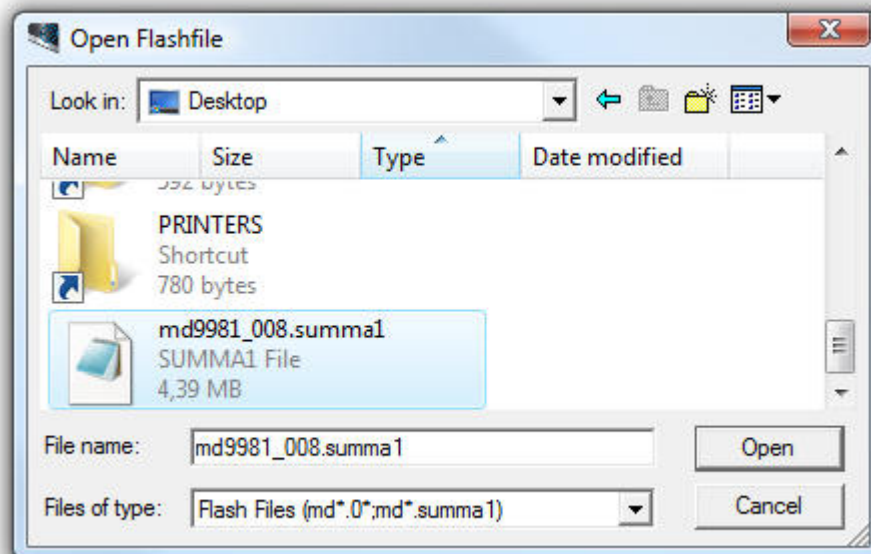
You can check the current firmware version with Summa Cutter Control. Clicking on Info (1) will read some information from the cutter and displays the Rom Revision (2).



UPGRADE FIRMWARE

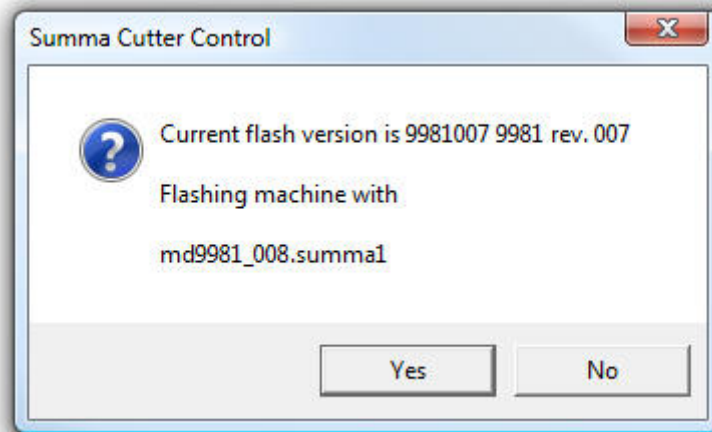
Before upgrading the firmware, it is recommended to reboot the cutter.

Click on Tests (3) and Update Firmware... (4). Navigate to the folder where you downloaded the latest firmware and select the new firmware.



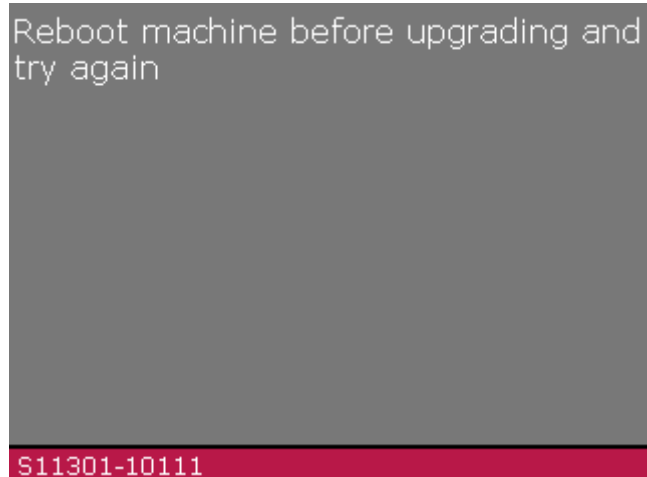
Firmware upgrade on Summa S Class 2

Summa Cutter Control then asks to confirm to upgrade the cutter with the selected file:



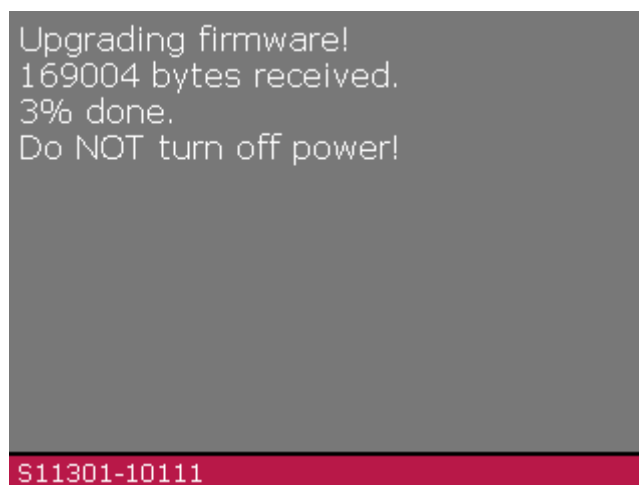
This will start the upgrade procedure.

In case a job was still in the buffer of the cutter, then the upgrade may fail. An error message will then be displayed:



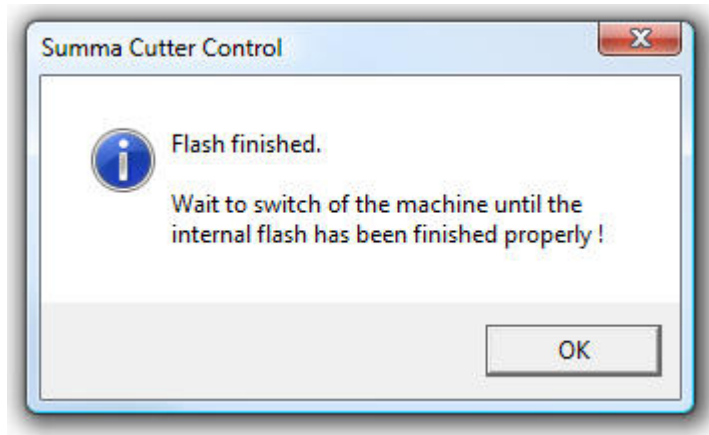
In this case, you will need to restart the cutter and start over again.

You can follow the progress on the display of the cutter:



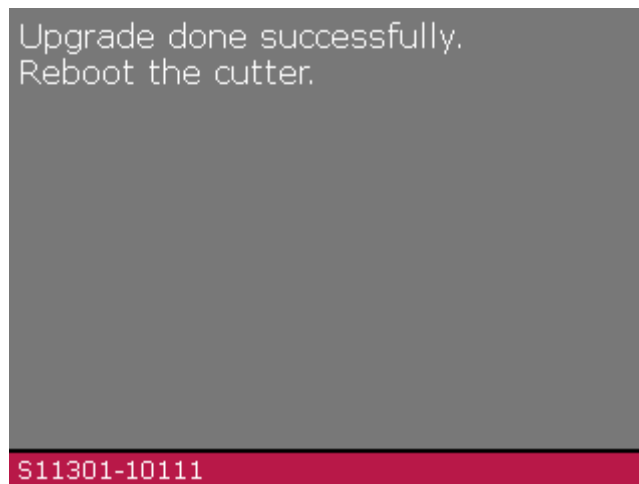
Firmware upgrade on Summa S Class 2

When all data has been sent to the cutter, Summa Cutter Control will display the next message:

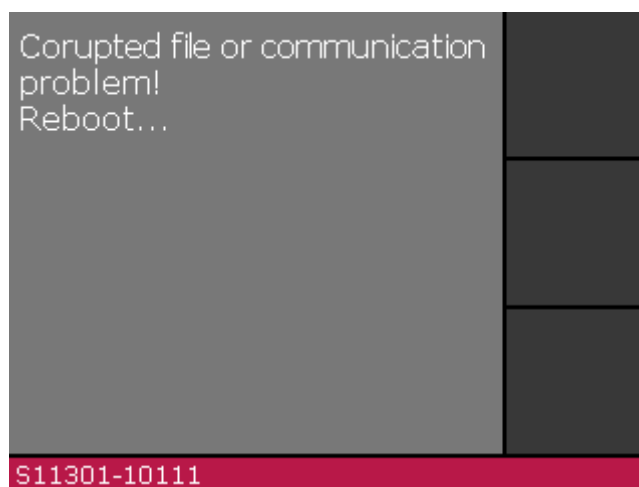


Do not power down the cutter until the cutter displays this to do so.

When the next message (Upgrade done successfully) is displayed, you need to power down and then power up the cutter to complete the upgrade.



In case the file was corrupted, incomplete, or interrupted, an error message will be displayed:



In this case, you will need to restart the cutter and start over again.