

## How to install a driver for a DC5(sx)

---



### Introduction

This document describes how to install the software necessary to drive the a DC5 series printer-cutter.

A **design software** is needed to create a design. Popular design programs are CorelDRAW, Adobe Illustrator, Inkscape, ... Design software is not supplied from Summa.

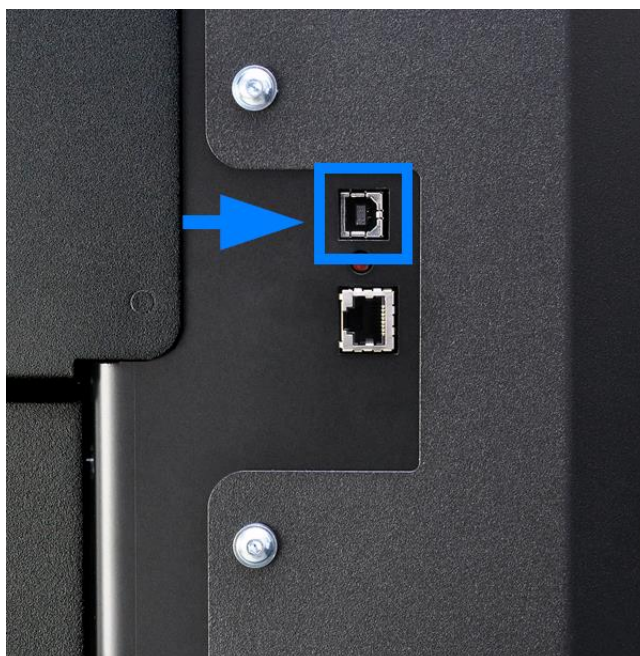
The design created with one of those design software's need to be sent to the printer-cutter. Before the design can be sent, the design need to be converted in commands understood by the printer-cutter. This is accomplished by the software **Summa ColorControl** (RIP). Summa ColorControl then needs to send the commands to the printer-cutter using a communication port. Depending on the communication interfaces available, and/or the interface used to drive the printer-cutter, different **driver software** needs to be installed.

Transferring the job from the design software to the cutting software can be done by means of a **plug-in**.

## Driver software

### USB Interface Connection

The USB port is located at the rear of the printer-cutter, above the power inlet.





### USB Driver Download

To be able to use the USB interface, a USB driver needs to be installed. This driver is available from the support page of the Summa website:

<https://www.summa.com/en/support/software-firmware/>

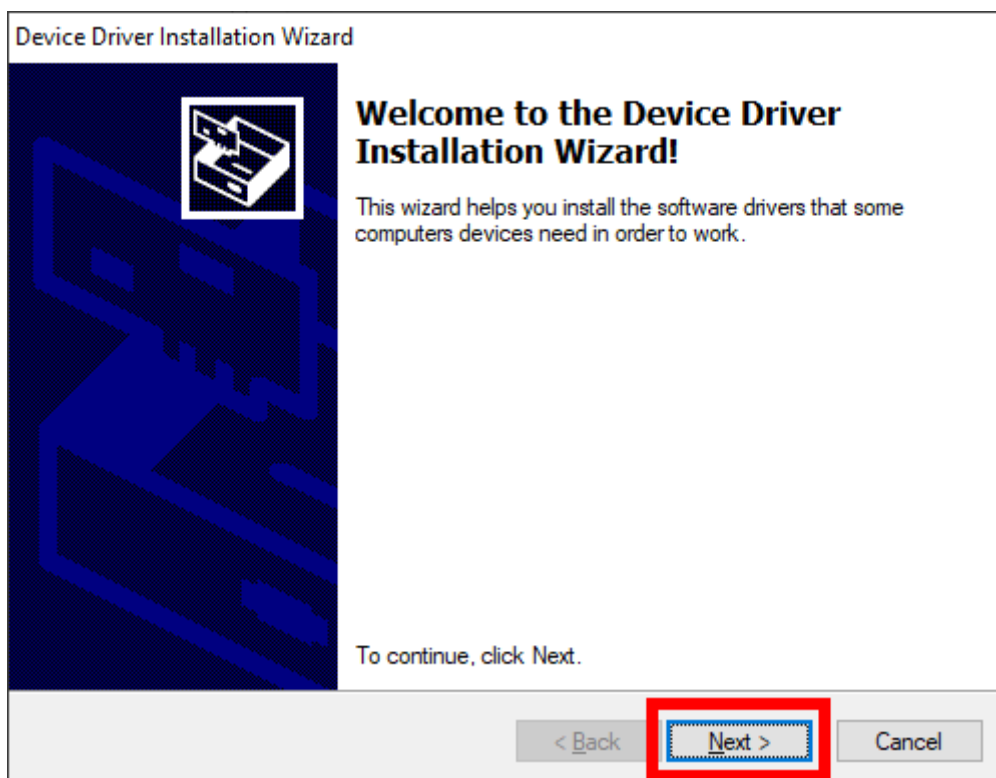
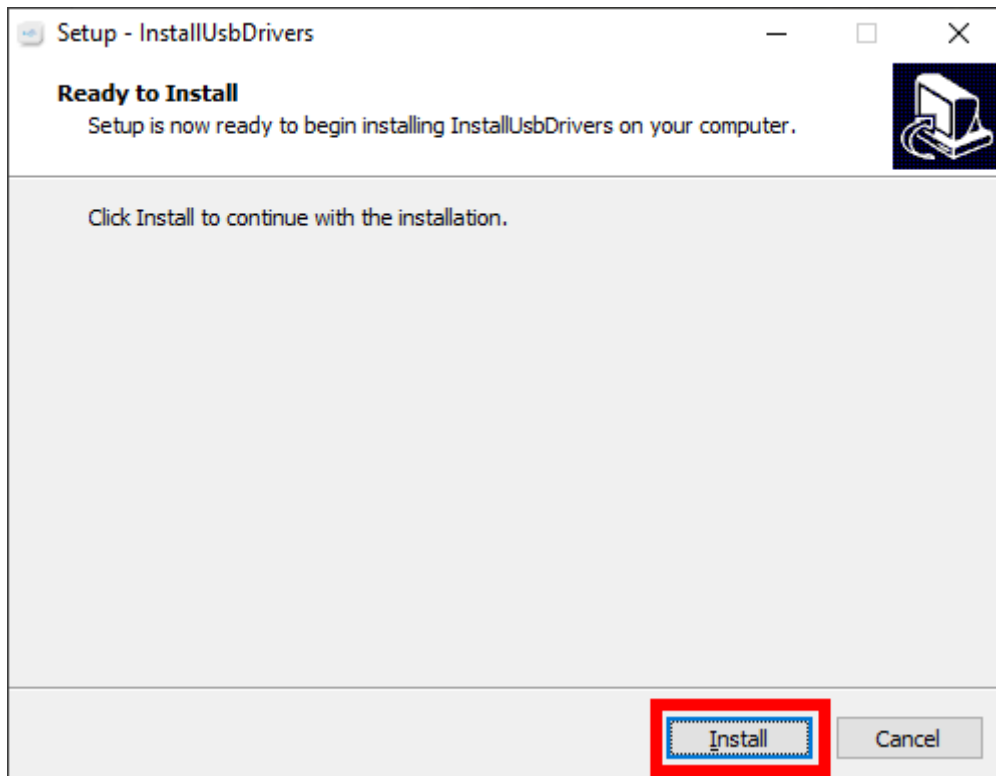
### Legacy Printer Cutters

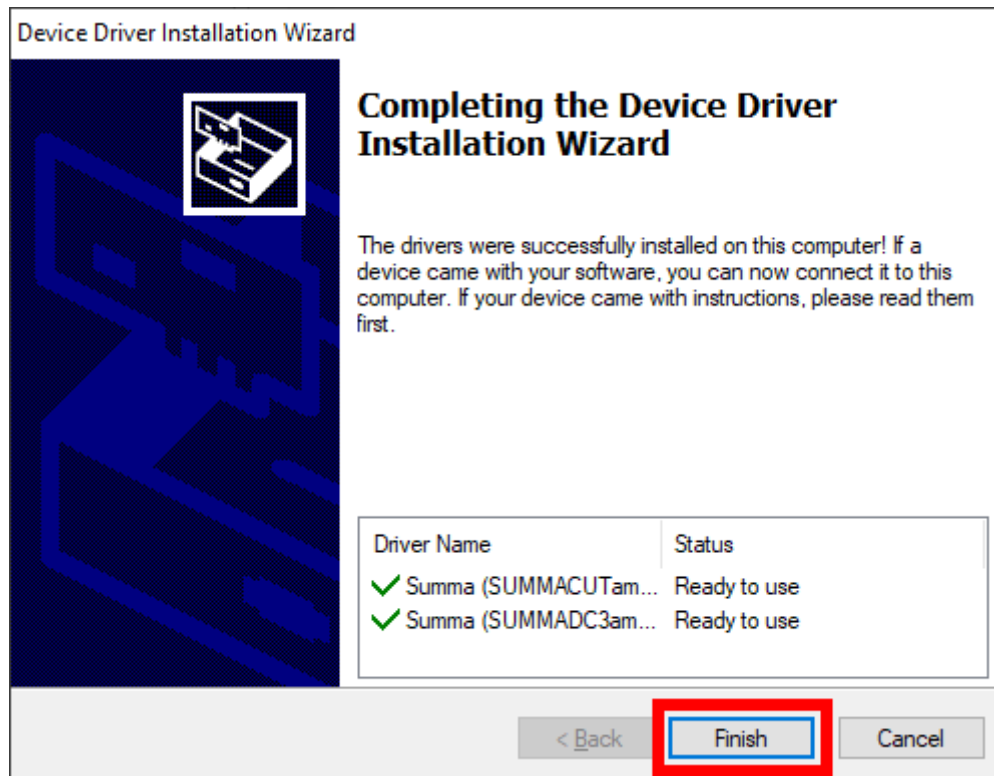
These products are discontinued and no longer available for purchase. Support on those products may still be provided but updates on software/firmware are limited or in some cases discontinued.

USB Drivers	Description	Version	Date
 <b>USB printer driver</b>	USB driver for Summa DC3, DC3 Plus, DC4, DC4sx, DC5 and DC5sx.	10.0 & 7.0	12-01-2017
 <b>Legacy USB driver</b>	Summa device driver for Windows XP, Vista	6.4	11-01-2016

### USB Driver Install

Double click on the downloaded driver to start the install process. Follow the install wizard to complete the install.





Connect the printer-cutter to the computer using the USB cable.

Switch the printer-cutter on.

Wait until the computer has completed the driver installation process.

### USB Port Configuration of the Printer-Cutter

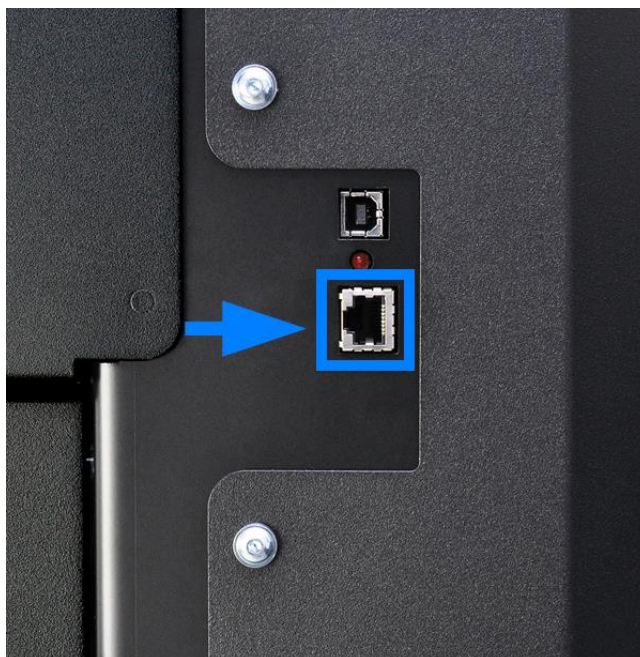
It is not necessary to load media in the printer-cutter to change the parameters.

Use the below steps to configure the USB class of the printer-cutter:

- Power on the cutter.
- Press [Settings].
- Press [Communication].
- Press [USB class].
- Select "USB port 1", unless multiple printer-cutters are connected to the same computer using the USB interface.
- Press [Apply] to confirm in case another USB port has been selected.
- Restart the printer-cutter in case another USB port has been selected and applied.

## Network Interface

The network port is located at the rear of the printer-cutter, above the power inlet.



When the cutter is connected using the network interface, you do not need a driver, you have to set the correct settings in the printer-cutter and Summa ColorControl.

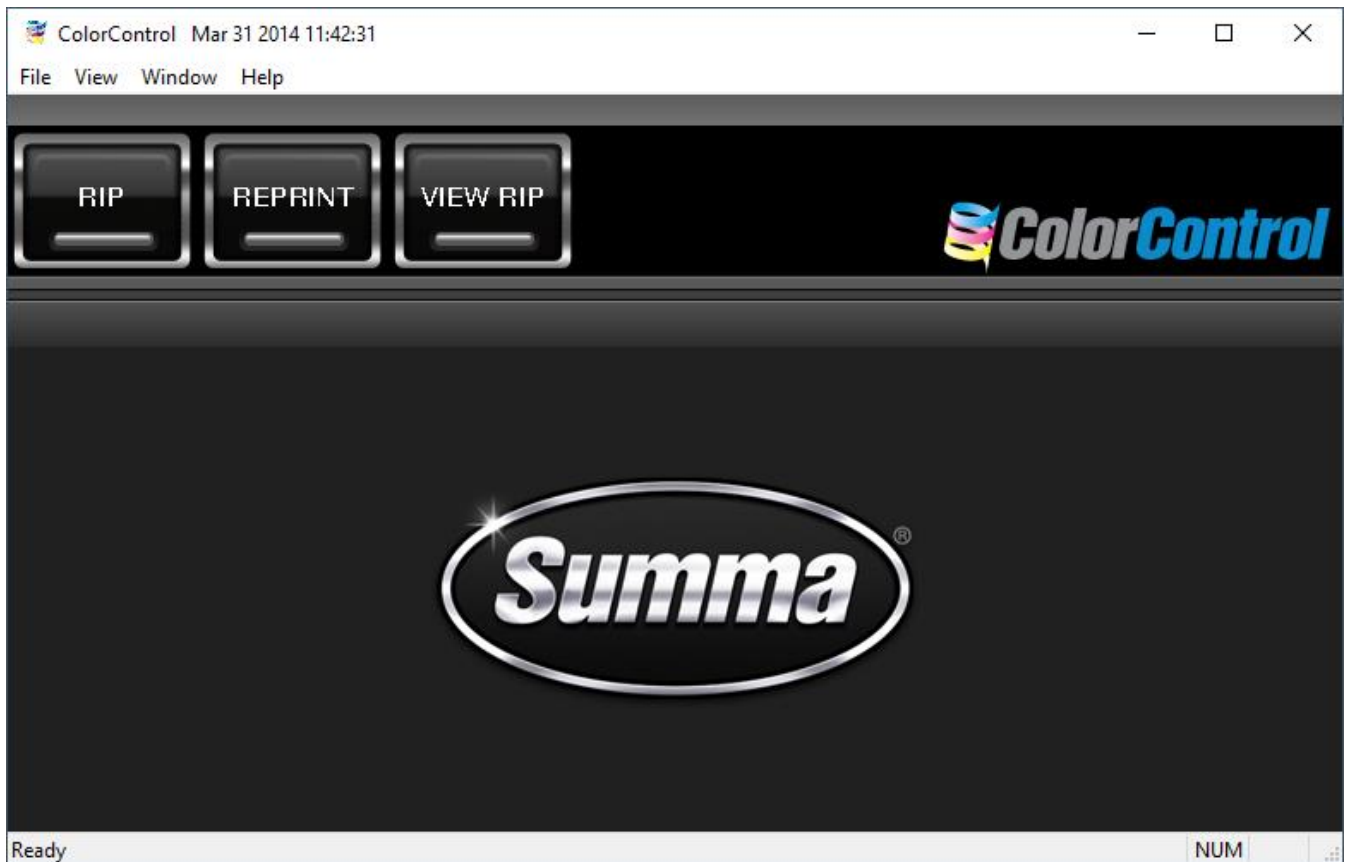
## Network Port Configuration of the Printer-Cutter

It is not necessary to load media in the printer-cutter to change the parameters.

Use the below steps to configure the network interface of the printer-cutter:

- Power on the cutter.
- Press [Settings].
- Press [Communication].
- Press [DHCP] to select whether or not the IP address has to be defined by a DHCP server.
- Press [Configure] to enter a static IP address, IP subnet mask, Gateway and DNS servers.
- Restart the printer-cutter to activate the changes made.

## Summa ColorControl



From Windows 7 on, we work with a program called *Summa ColorControl*.



This program can import PostScript files (EPS or PDF) and then send data to the printer-cutter. Most design programs are able to generate files in one of those formats.

We do not work with a 'Windows based printer driver'.

The program *Summa ColorControl* can be downloaded from the Summa support website:  
<https://www.summa.com/en/support/software-firmware/>

## Legacy Printer Cutters

These products are discontinued and no longer available for purchase. Support on those products may still be provided but updates on software/firmware are limited or in some cases discontinued.

Software	Description	Version	Date
 <b>WinPlot</b>	Cutting program that imports EPS, AI and PDF files: positioning, rotating and scaling possibilities. Supports Vista/7/8/10/11 32-bit & 64-bit, and is compatible with all Summa brand cutters.	11.8.0.0	08-05-2019
 <b>Summa ColorControl for DC5</b>	ColorControl RIP for Summa DC5 printers for windows. <b>Requires:</b> ColorControl dongle (protection key).		08-02-2018

This program works as a 'printer-cutter driver', and converts the design created and exported in EPS or PDF format in commands understood by the printer-cutter.

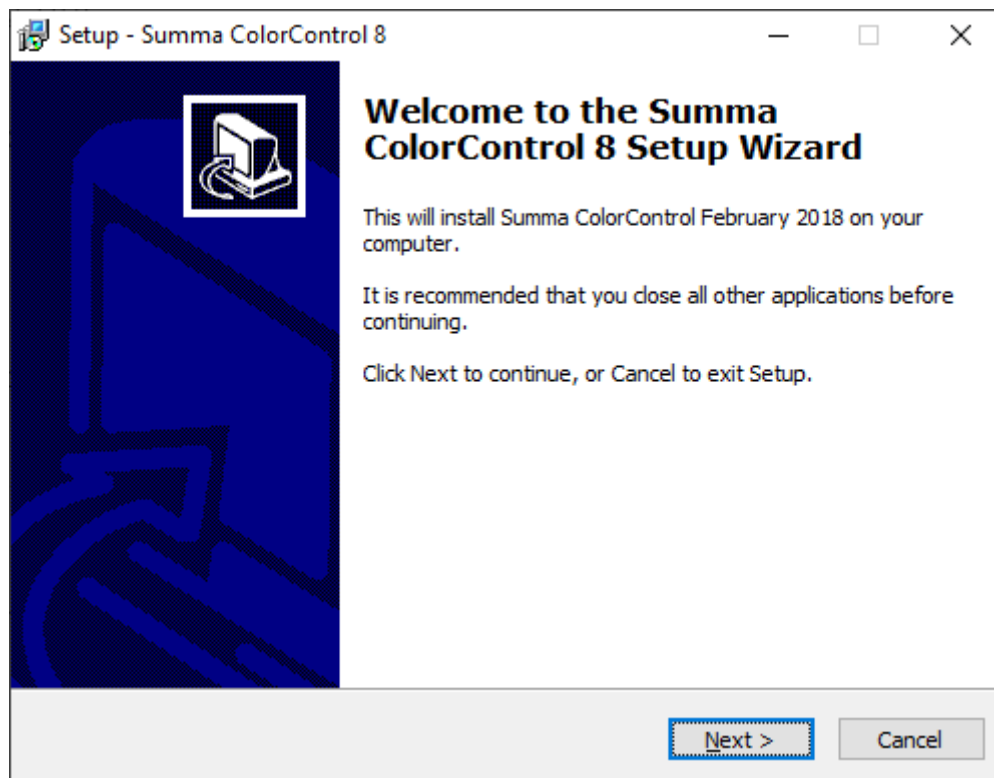
The manual with the detailed instruction how to use Summa ColorControl can be downloaded from the manuals section of the support page on the Summa website.

DC5 & DC5sx	Version	Date
 <b>English</b>	03	29-05-2018
 <b>Français</b>	03	29-05-2018

## Installation

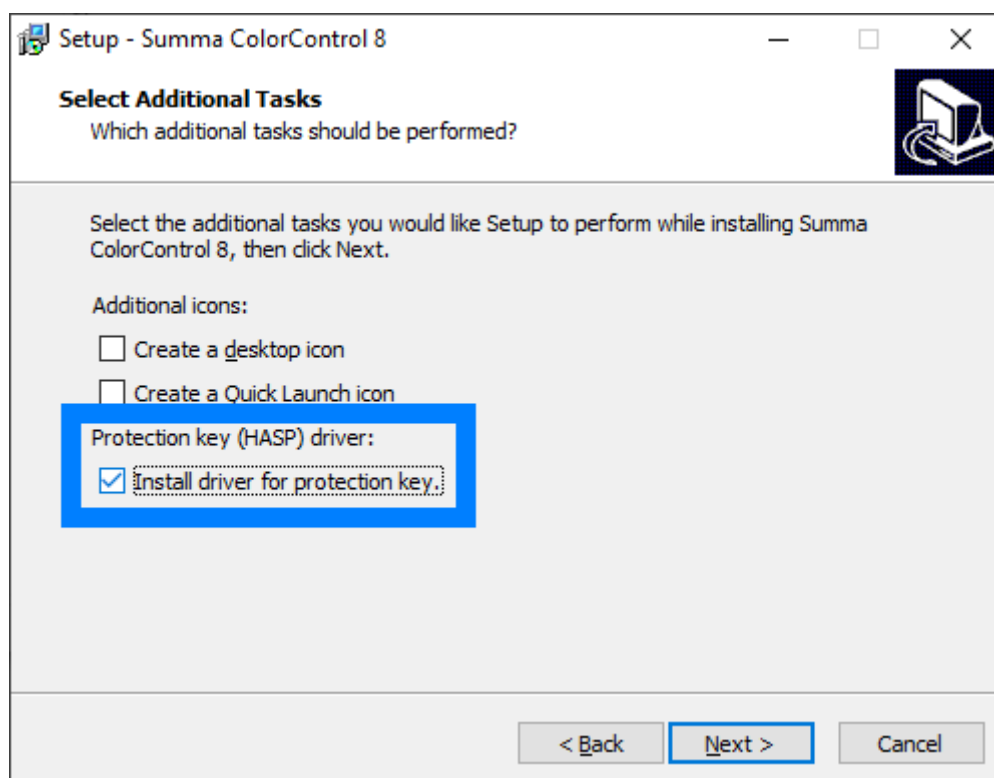
After downloading the Summa ColorControl installer software, double click the file “SetupColorControl\_DC5.exe” to start the installation process.

Click the [Next] and [Install] button until the installation process is finished.





When the option to “Select Additional Tasks” is displayed, make sure the option “Install driver for protection key” is activated.



Plug the protection key in a free USB socket on the computer. Wait until all necessary software for the protection key is installed.

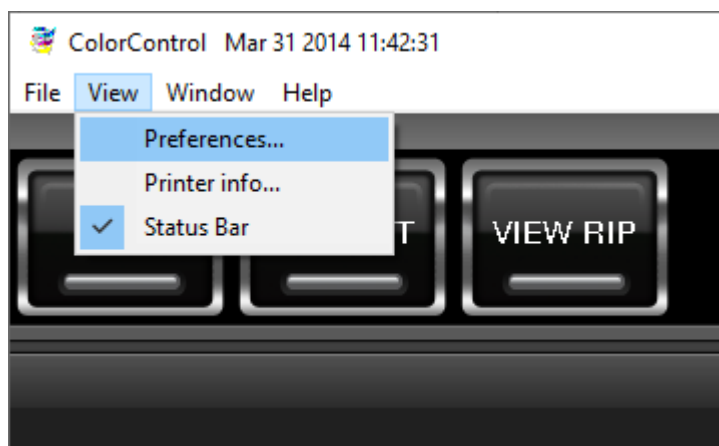


## Configuration

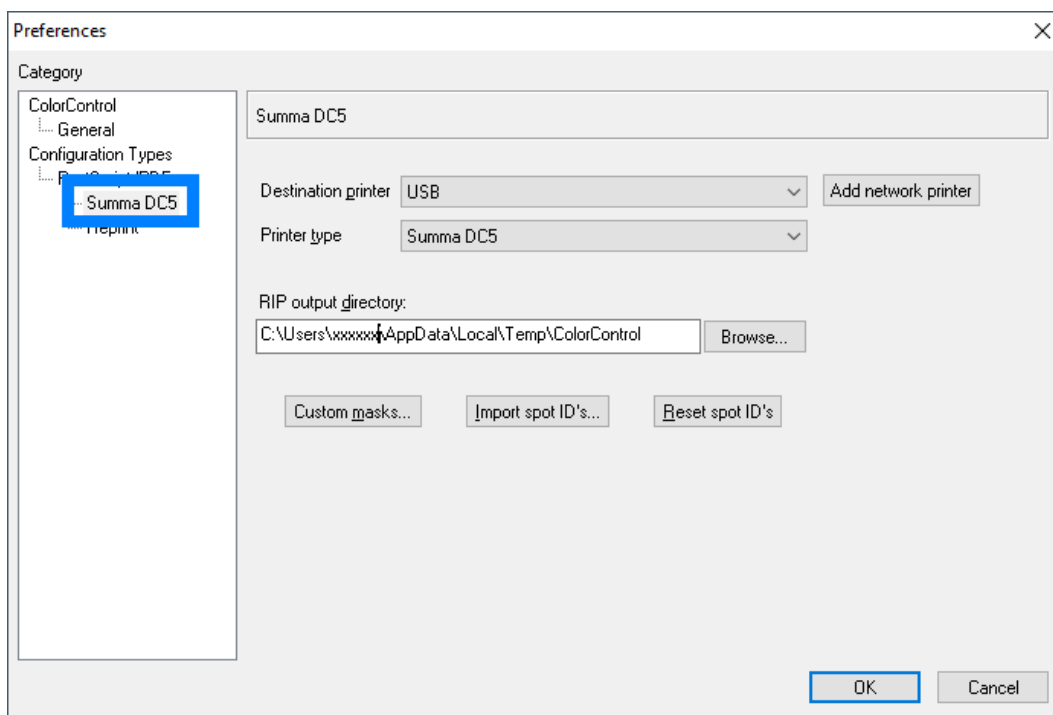
To configure *Summa ColorControl* for use with a Summa DC-series printer-cutter do the following:

- Start *Summa ColorControl*.

- Click [View] – [Preferences].

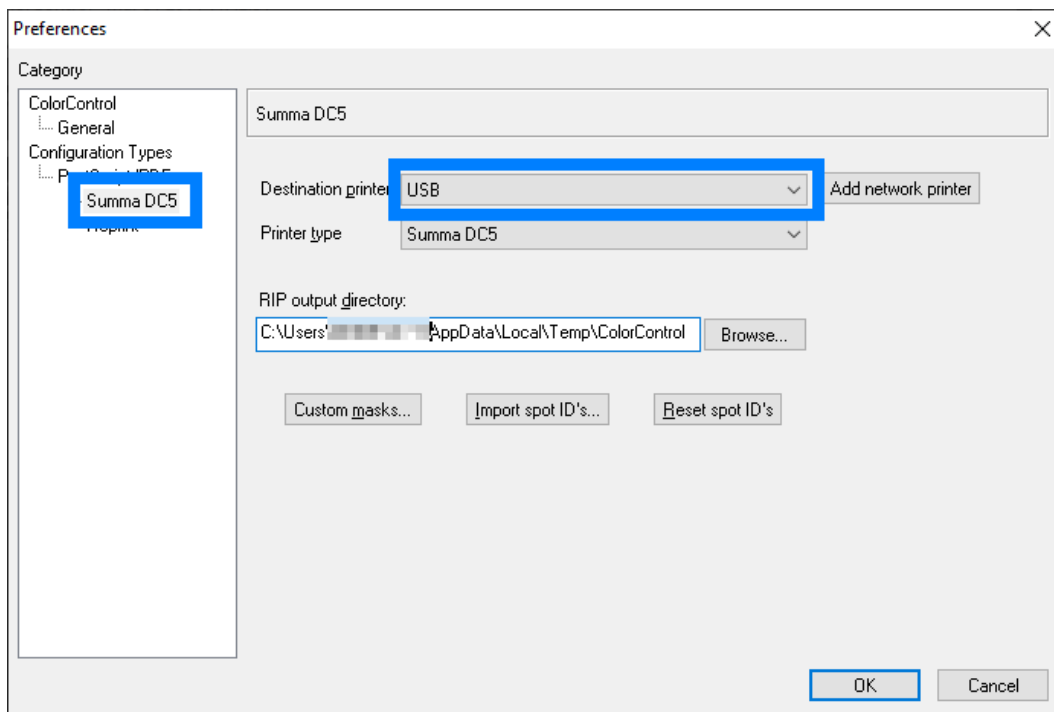


- In the *Preferences* dialog, click in the “Category” pane on “Summa DC5”.



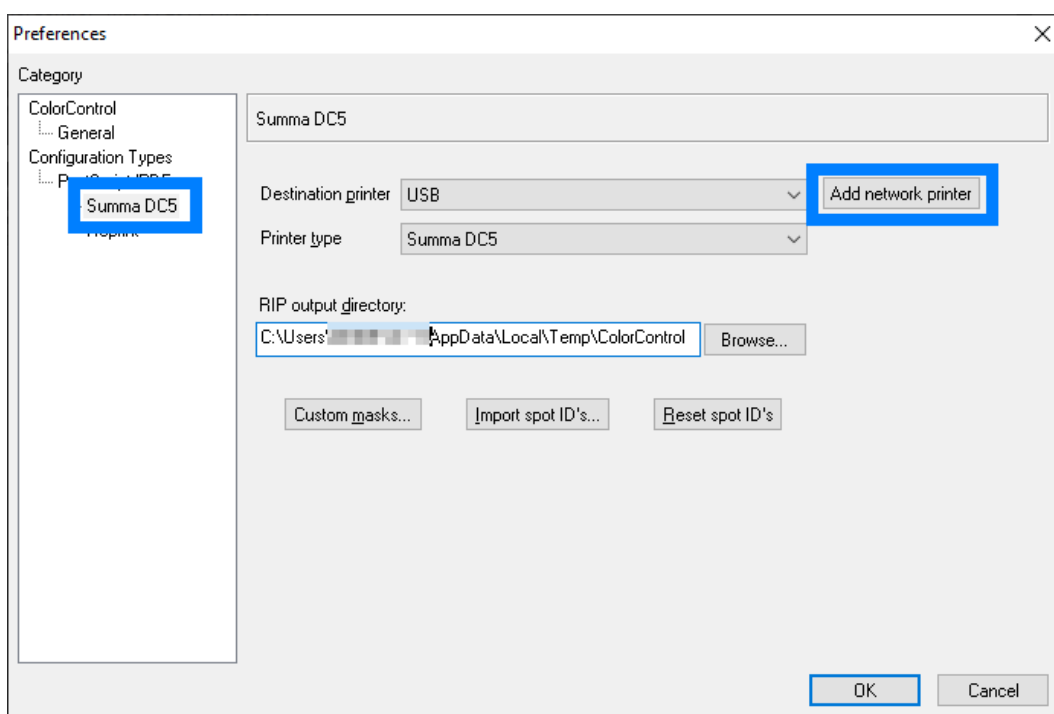
## USB Port

To configure *Summa ColorControl* for use of the USB interface, select the option “USB” in the “Destination printer” dropdown box:

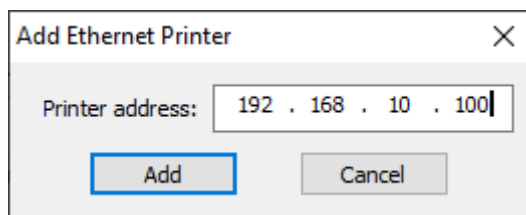


## Network Port

To configure *Summa ColorControl* for use of a network interface, click the [Add network printer] button.



Enter the IP address of the printer-cutter. Click the [Add] button to confirm.



The IP address is then assigned to the printer port to be used.

## Plug-ins

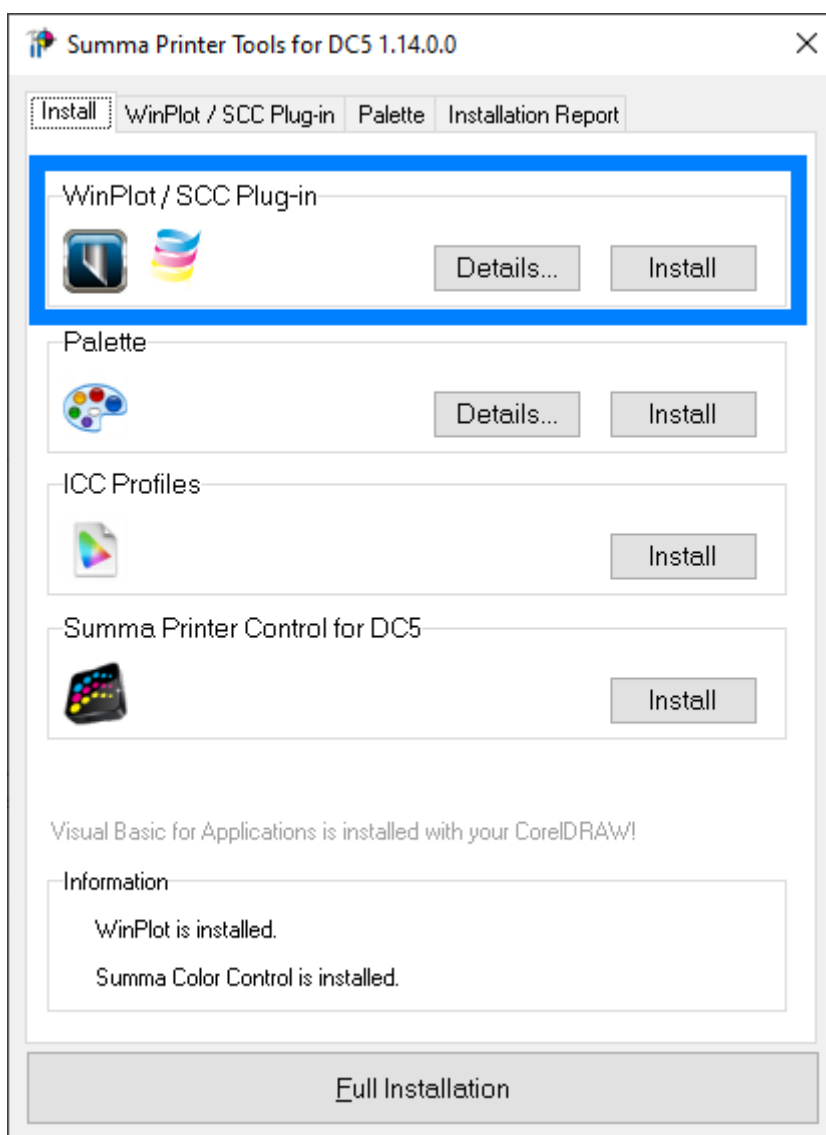
There exists also a *plug-in* for Corel 12->2020 and Illustrator CS1->CC->2020

The *plug-in* can be installed from the software tool Summa Printer Tools for DC5, which is available from the support page on the Summa website.

 <b>Summa Printer Tools for DC5</b>	Software bundle including all printing-related tools including:	1.14.0.0	03-04-2020
<ul style="list-style-type: none"><li>&gt; <b>Summa Printer Control for DC5 1.9.0.0</b> Software interface for adjusting all Summa DC5 /DC5sx printing and cutting parameters. Supports Windows Vista/Win 7/Win 8/Win 10, and is compatible with Summa DC5 series printers only.</li><li>&gt; <b>Plug-in for CorelDRAW 12 - 2020 and Adobe Illustrator CS - CC 2020</b> Plug-in for CorelDRAW &amp; Illustrator to use with Winplot 6.6 or higher.</li><li>&gt; <b>ICC profile for DC series printers</b></li></ul>			

These gets rid of the hassle to export a job from the designing software, and importing the job in Summa ColorControl.


Close the design software, then click on the [Install] button to have the plug-ins installed for the supported versions of CorelDRAW and/or Adobe Illustrator.




Keep in mind not all versions of CorelDRAW support plug-ins: only the Graphics Suite supports plug-ins:

## CorelDRAW®

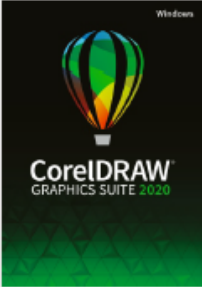
### Product Family Comparison



For occasional graphics users and creative consumers



For graphics hobbyists and home businesses



For graphics professionals in small to large businesses

Main Applications			Most Popular
CorelDRAW® 2020	✓* CorelDRAW Essentials 2020	✓* CorelDRAW Standard 2020	✓
Corel PHOTO-PAINT™ 2020		✓* Corel PHOTO-PAINT Standard 2020	✓
Corel Font Manager™ 2020			✓
CAPTURE™			✓
CorelDRAW.app™			✓
Corel AfterShot™ 3 HDR			✓
Key Features & Tools (Highlights)			
Bitmap-to-vector tracing	(✓) Quick Trace (one-click tracing)	✓ PowerTRACE™	✓ PowerTRACE™ (Advanced with AI technology)
Bevel tool, Shadow tool, Spiral, Smooth and Smear tool		✓	✓
Clone Tool, Artistic Media		✓	✓
Alignment guides, Guidelines docker		✓	✓
Symmetry drawing mode, Block Shadow tool, Impact tool, Pointillizer, PhotoCocktail			✓
Object styles, Color styles, Color harmonies			✓
Professional Print options (CMYK features, Composite, Color separations, Postscript, Prepress tabs, large print preview)			✓
Advanced page layout: left & right master pages, custom placeholder text			✓
Enhanced Color management, Color proofing option, spot color support on output			✓
Collaboration tools**			✓
Automation support (VSTA, VBA), Macro Manager			✓

Once the plug-in is installed, the design can be sent to Summa ColorControl from the toolbar (CorelDRAW) or from the File submenu (Adobe Illustrator):

## CorelDRAW

Four options are available:

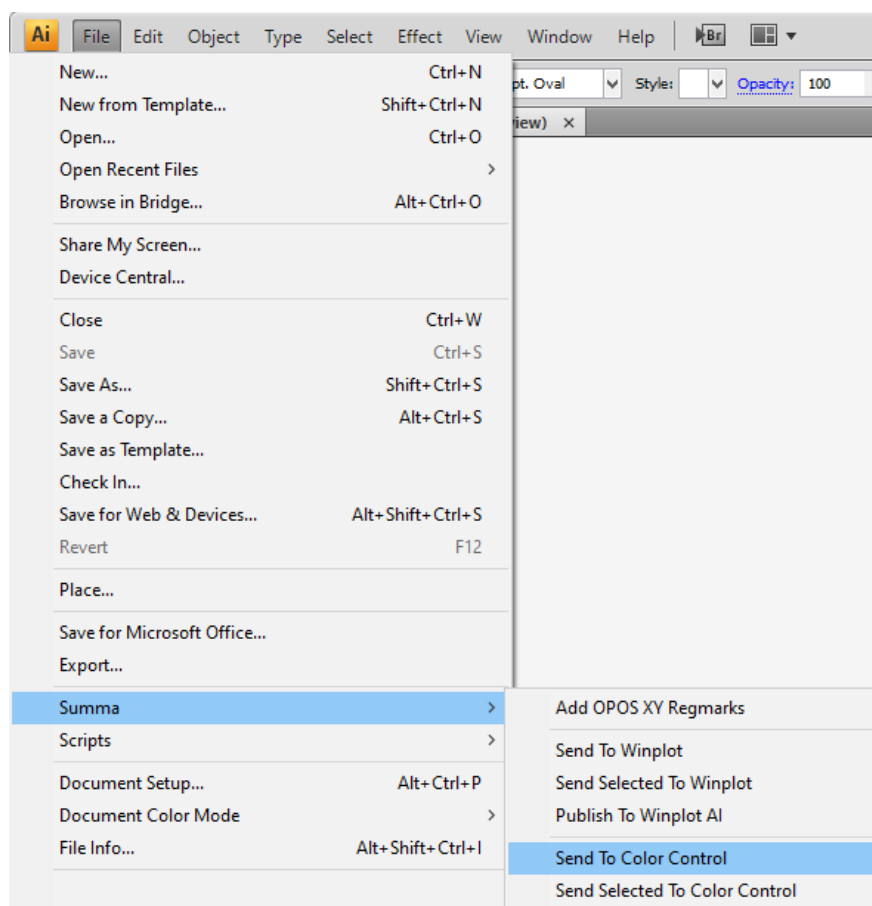
- Send the complete design to Summa ColorControl
- Send only the selected objects to Summa ColorControl
- Select the Summa ICC Profile



## Adobe Illustrator

Three options are available:

- Send the complete design to Summa ColorControl
- Send only the selected objects to Summa ColorControl

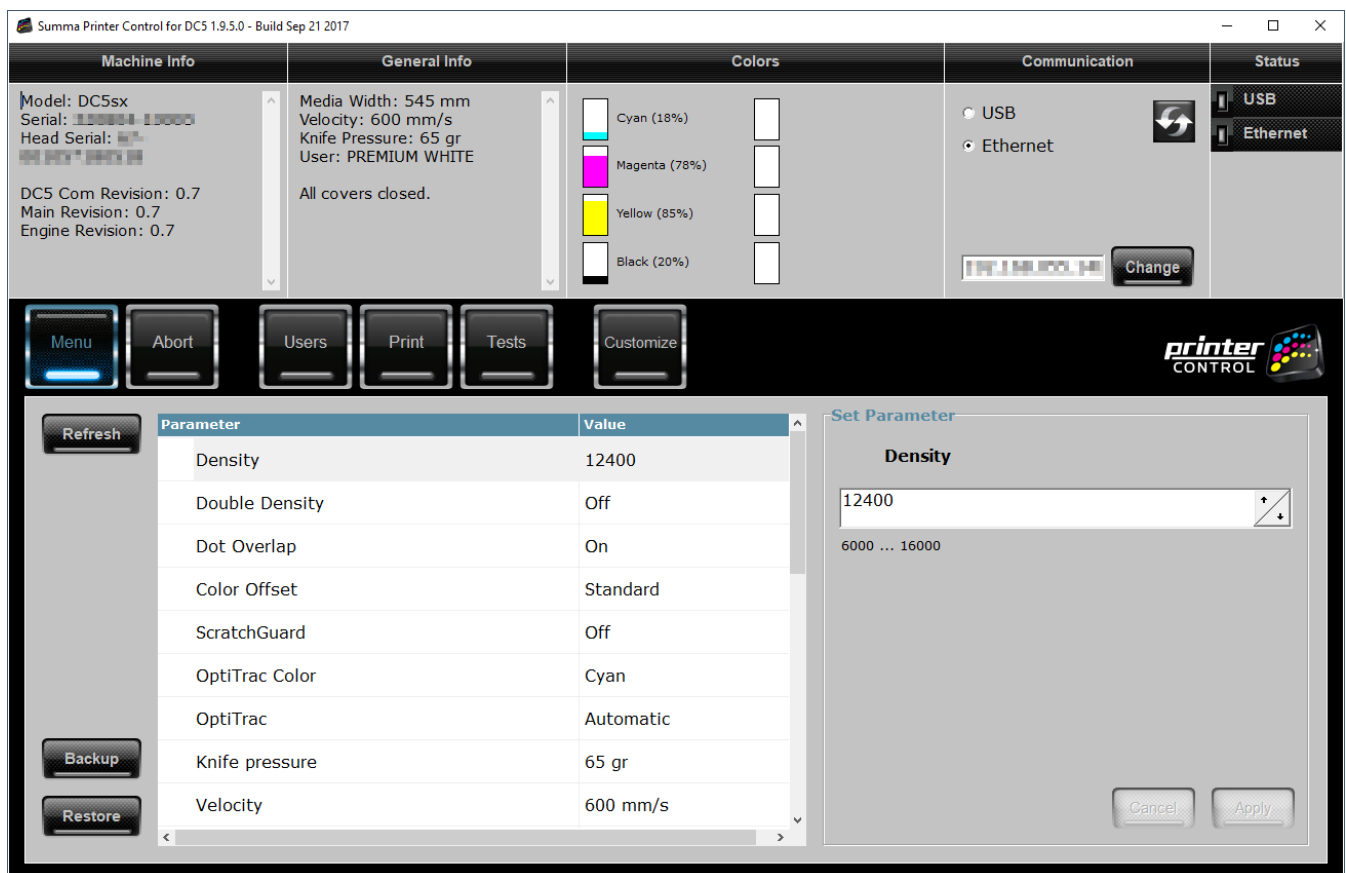


## Summa Printer Control for DC5

The Summa Printer Control for DC5 program basically has the same functions as the control panel.


The program Summa Printer Control for DC5 can be used to:

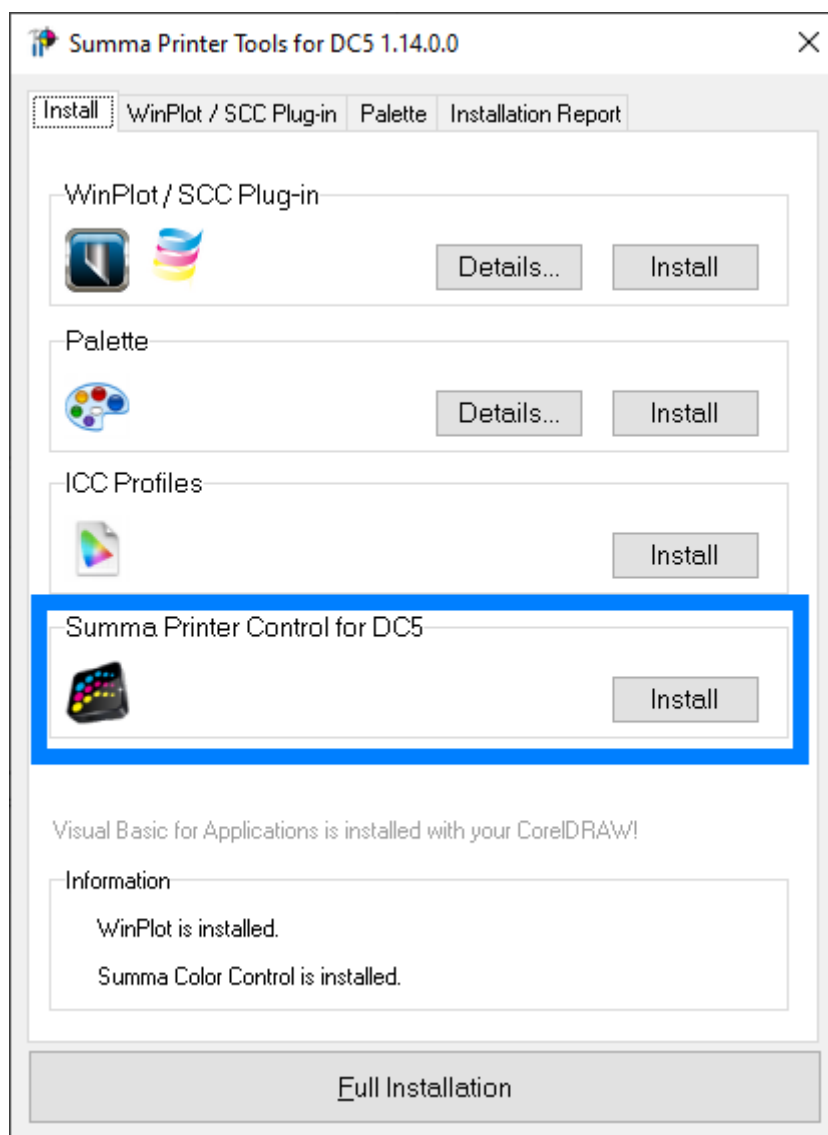
- Control all parameters of the printer-cutter
- Perform tests
- Send files to the printer-cutter
- Upgrade the firmware of the printer-cutter



*Summa Printer Control for DC5* can be installed from the software tool *Summa Printer Tools for DC5*, which is available from the support page on the Summa website.



 <b>Summa Printer Tools for DC5</b>	Software bundle including all printing-related tools including:	1.14.0.0	03-04-2020
	<div data-bbox="478 347 1037 631"> <ul style="list-style-type: none"> <li>&gt; <b>Summa Printer Control for DC5 1.9.0.0</b> Software interface for adjusting all Summa DC5 /DC5sx printing and cutting parameters. Supports Windows Vista/Win 7/Win 8/Win 10, and is compatible with Summa DC5 series printers only.</li> <li>&gt; <b>Plug-in for CorelDRAW 12 - 2020 and Adobe Illustrator CS - CC 2020</b> Plug-in for CorelDRAW &amp; Illustrator to use with Winplot 6.6 or higher.</li> <li>&gt; <b>ICC profile for DC series printers</b></li> </ul> </div>		



Before the program can be used, the communication interface needs to be selected and configured to match the connection type (USB or Network) and communication parameters.

Revised January 5, 2023