

How to install a driver for a DC4(sx)



Introduction

This document describes how to install the software necessary to drive the a DC4 series printer-cutter.

A **design software** is needed to create a design. Popular design programs are CorelDRAW, Adobe Illustrator, Inkscape, ... Design software is not supplied from Summa.

The design created with one of those design software's need to be sent to the printer-cutter. Before the design can be sent, the design need to be converted in commands understood by the printer-cutter. This is accomplished by the software **Summa ColorControl** (RIP). Summa ColorControl then needs to send the commands to the printer-cutter using a communication port. Depending on the communication interfaces available, and/or the interface used to drive the printer-cutter, different **driver software** needs to be installed.

Transferring the job from the design software to the cutting software can be done by means of a **plug-in**.

Driver software

USB Interface Connection

The USB port is located at the rear of the printer-cutter.





USB Driver Download

To be able to use the USB interface, a USB driver needs to be installed. This driver is available from the support page of the Summa website:

<https://www.summa.com/en/support/software-firmware/>

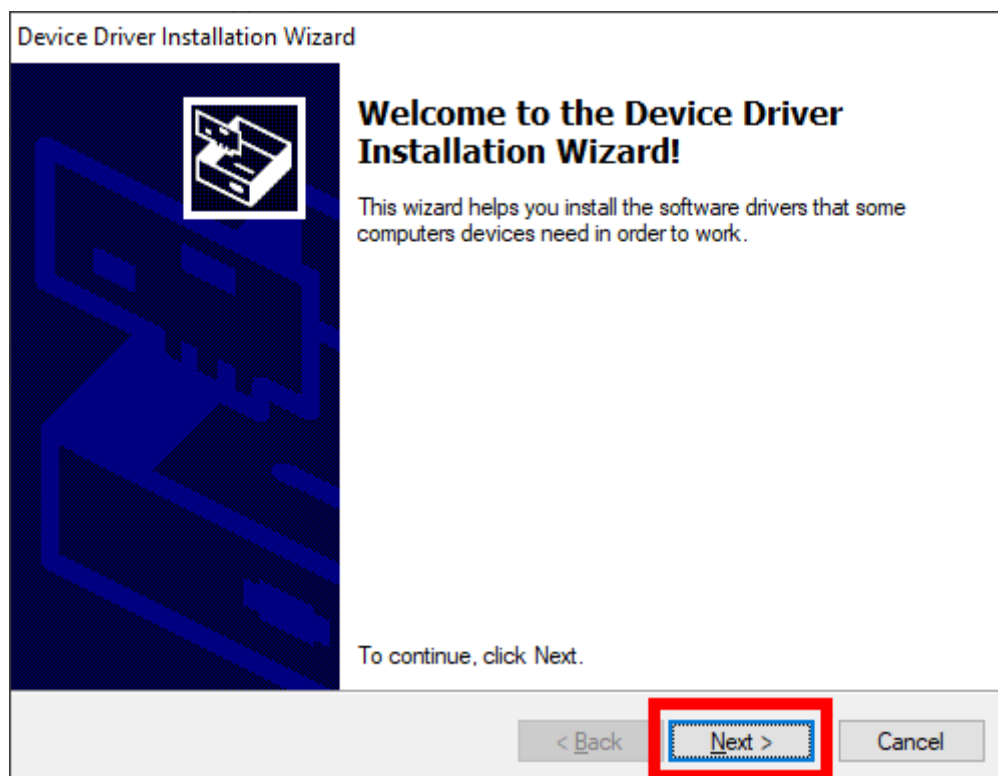
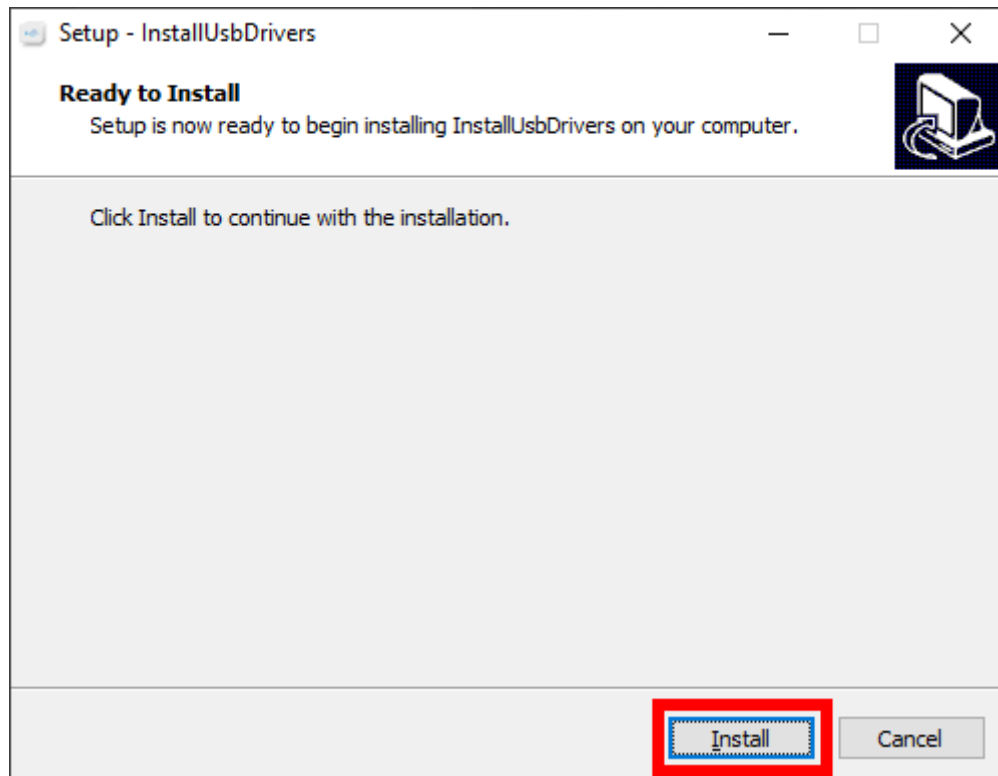
Legacy Printer Cutters

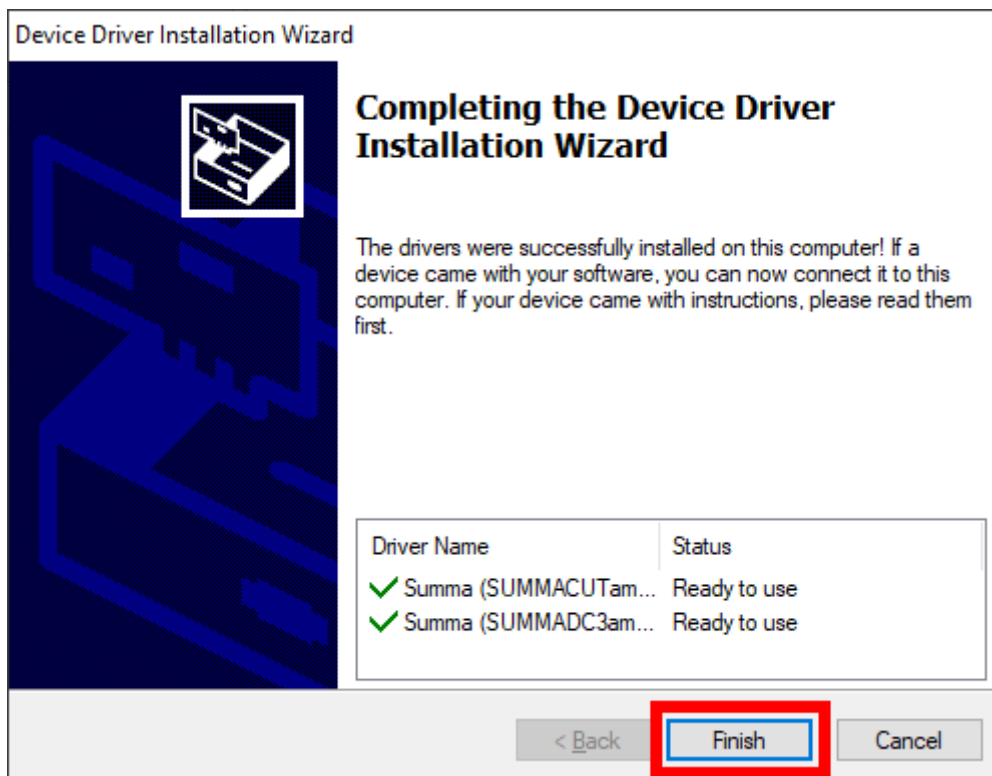
These products are discontinued and no longer available for purchase. Support on those products may still be provided but updates on software/firmware are limited or in some cases discontinued.

USB Drivers	Description	Version	Date
 USB printer driver	USB driver for Summa DC3, DC3 Plus, DC4, DC4sx, DC5 and DC5sx.	10.0 & 7.0	12-01-2017
 Legacy USB driver	Summa device driver for Windows XP, Vista	6.4	11-01-2016

USB Driver Install

Double click on the downloaded driver to start the install process. Follow the install wizard to complete the install.





Connect the printer-cutter to the computer using the USB cable.









Switch the printer-cutter on.



Wait until the computer has completed the driver installation process.

USB Port Configuration of the Printer-Cutter

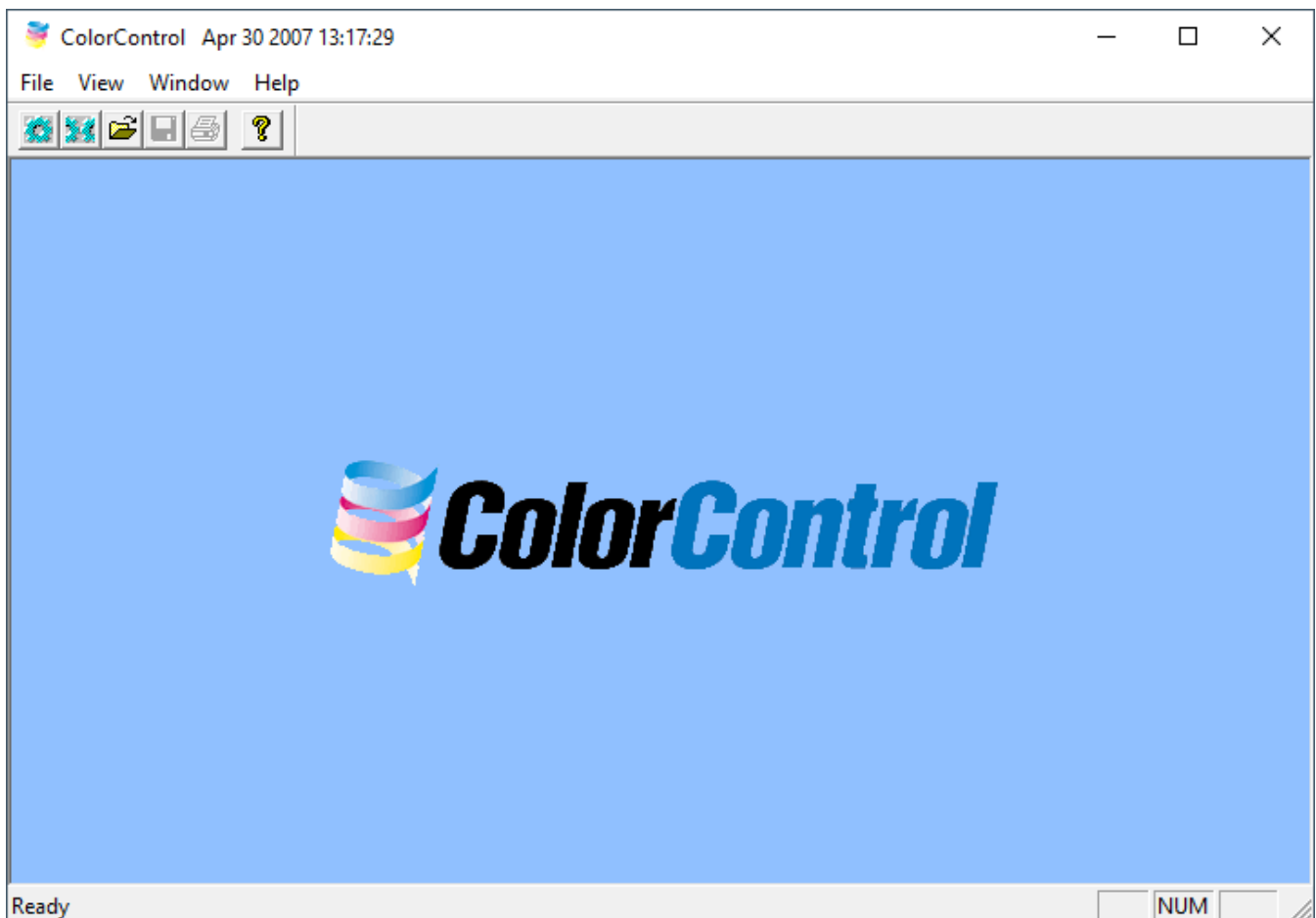
It is not necessary to load media in the printer-cutter to change the parameters.

Use the below steps to configure the USB class of the printer-cutter:

- Power on the cutter.
- Click  [MENU].
"MAIN MENU: PRINTER MENU" appears on the display.
- Press  or  until "MAIN MENU: SYSTEM MENU" is displayed.
- Click  [ENTER].
"SYSTEM MENU: TAKE UP ROLL - *DISABLE" will appear.
Actual text may be different, depending whether the take up roll is enabled or disabled.
- Press  or  until "SYSTEM MENU: USB CLASS" is displayed.
- Press  or  to change to a different USB class.

- Click  [APPLY] to confirm in case another USB port has been selected. The selected USB class is proceeded by a * to indicate the chosen selection.
- Click 2 times on  to return to the main menu.
- Restart the printer-cutter in case another USB port has been selected and applied.

Summa ColorControl



From Windows XP on, we work with a program called *Summa ColorControl*.




This program can import PostScript files (EPS or PDF) and then send data to the printer-cutter. Most design programs are able to generate files in one of those formats.

We do not work with a 'Windows based printer driver'.

The program *Summa ColorControl* can be downloaded from the Summa support website:
<https://www.summa.com/en/support/software-firmware/>

Legacy Printer Cutters

These products are discontinued and no longer available for purchase. Support on those products may still be provided but updates on software/firmware are limited or in some cases discontinued.

Software	Description	Version	Date
 WinPlot	Cutting program that imports EPS, AI and PDF files: positioning, rotating and scaling possibilities. Supports Vista/7/8/10/11 32-bit & 64-bit, and is compatible with all Summa brand cutters.	11.8.0.0	08-05-2019
 Summa ColorControl for DC5	ColorControl RIP for Summa DC5 printers for windows. Requires: ColorControl dongle (protection key).		08-02-2018
 Summa ColorControl 7.0	RIP and cut software for Summa DC3, Summa DC3 Plus printers and DC4, includes cutting support and other unique features. Supports Windows Vista 7/8/10, and is compatible with Summa DC3, DC4 & DC4sx printers only. Requires: ColorControl dongle (protection key).	7.0	08-02-2018

This program works as a 'printer-cutter driver', and converts the design created and exported in EPS or PDF format in commands understood by the printer-cutter.

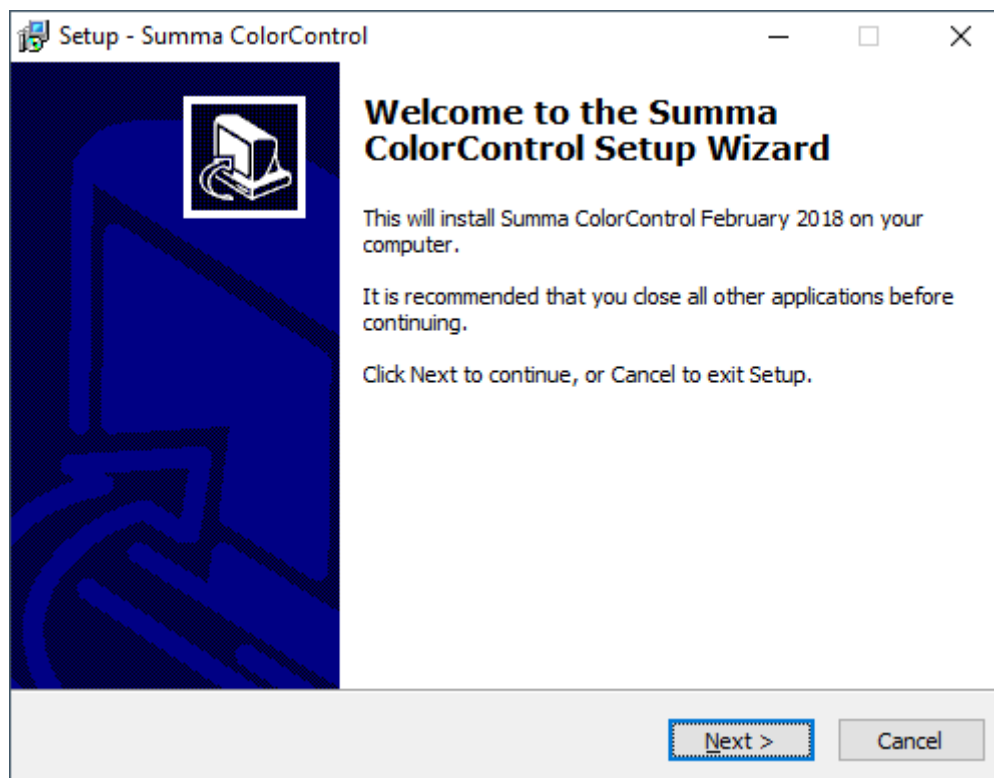
The manual with the detailed instruction how to use Summa ColorControl can be downloaded from the manuals section of the support page on the Summa website.

DC4	Version	Date
 English	03	26-08-2008
DC4sx	Version	Date
 English	03	26-08-2008
 Français	03	24-05-2007

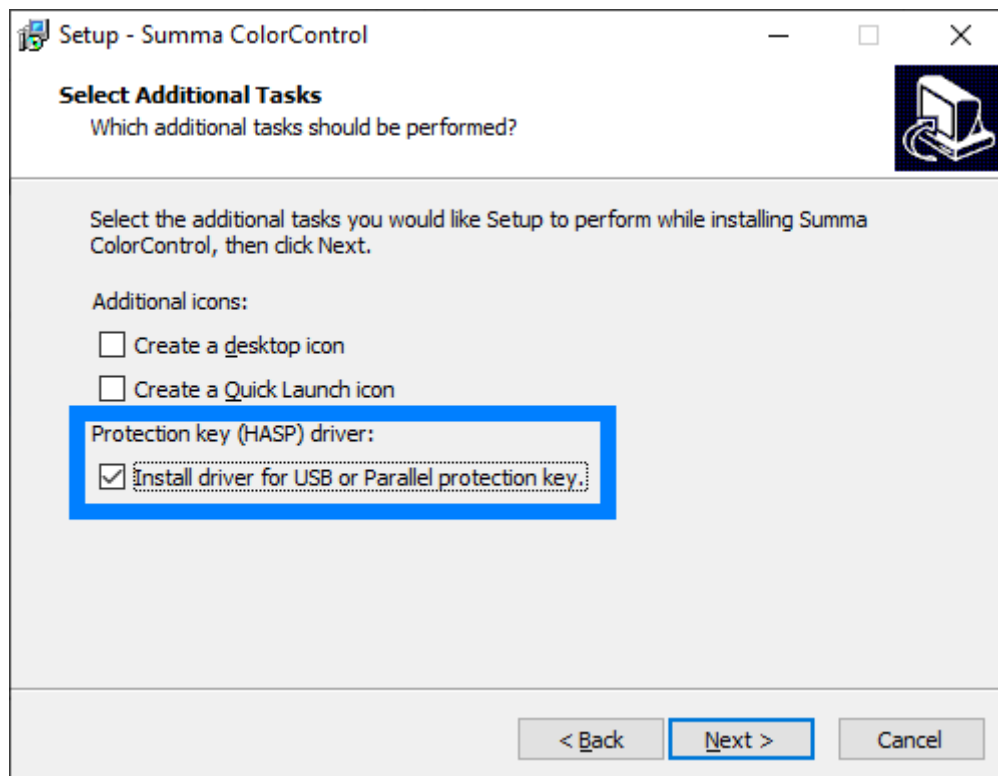
Installation

After downloading the Summa ColorControl installer software, double click the file “setupColorControl.exe” to start the installation process.

Click the [Next] and [Install] button until the installation process is finished.



When the option to “Select Additional Tasks” is displayed, make sure the option “Install driver for protection key” is activated.



Plug the protection key in a free USB socket or printer port, depending on the protection key type, on the computer. Wait until all necessary software for the protection key is installed.

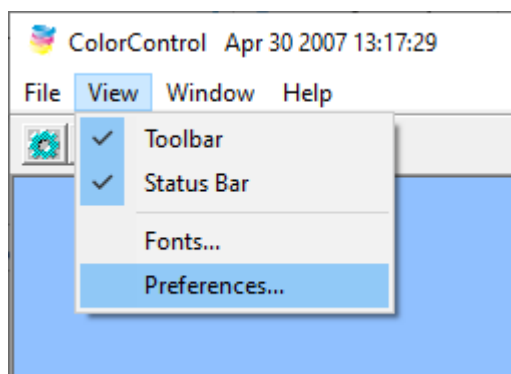


Configuration

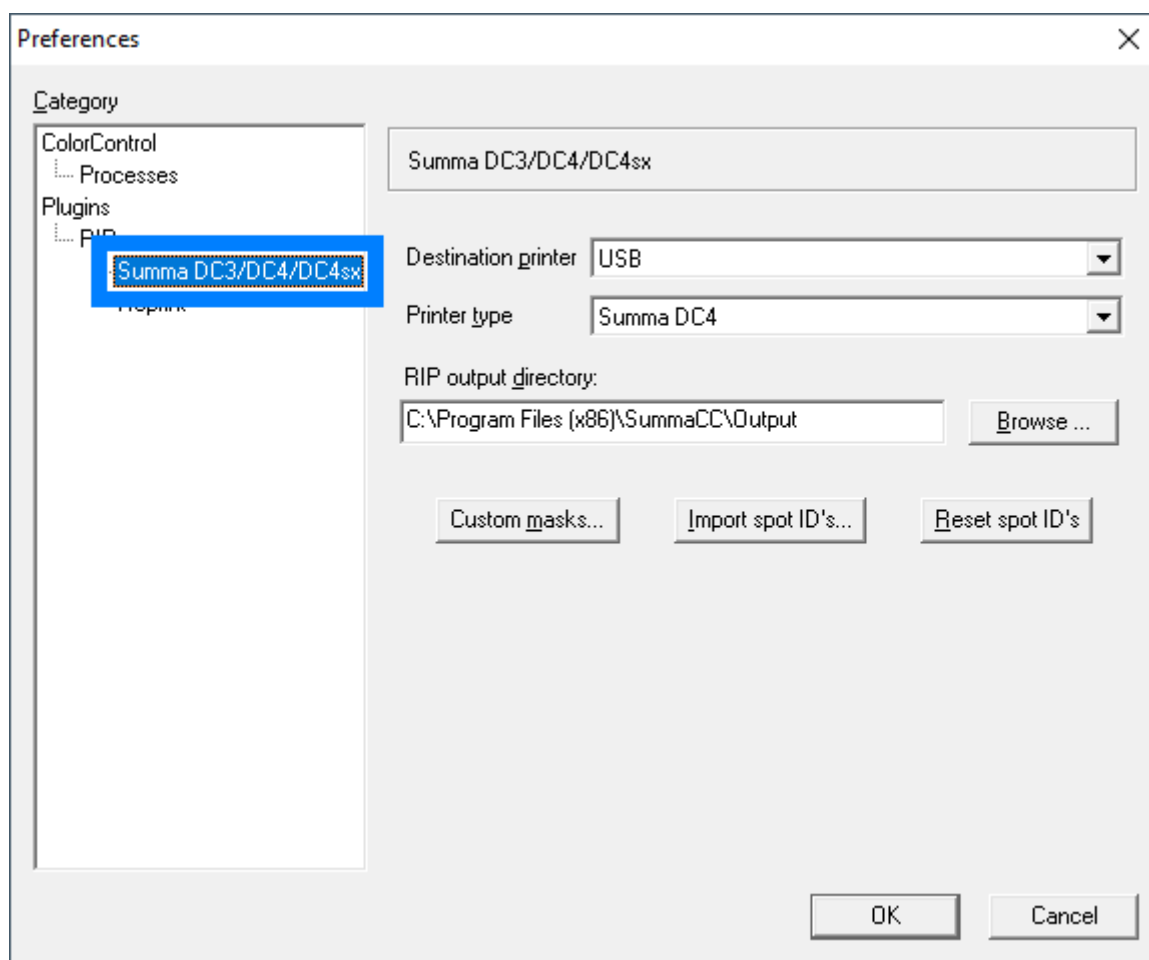
To configure *Summa ColorControl* for use with a Summa DC-series printer-cutter do the following:

- Start *Summa ColorControl*.

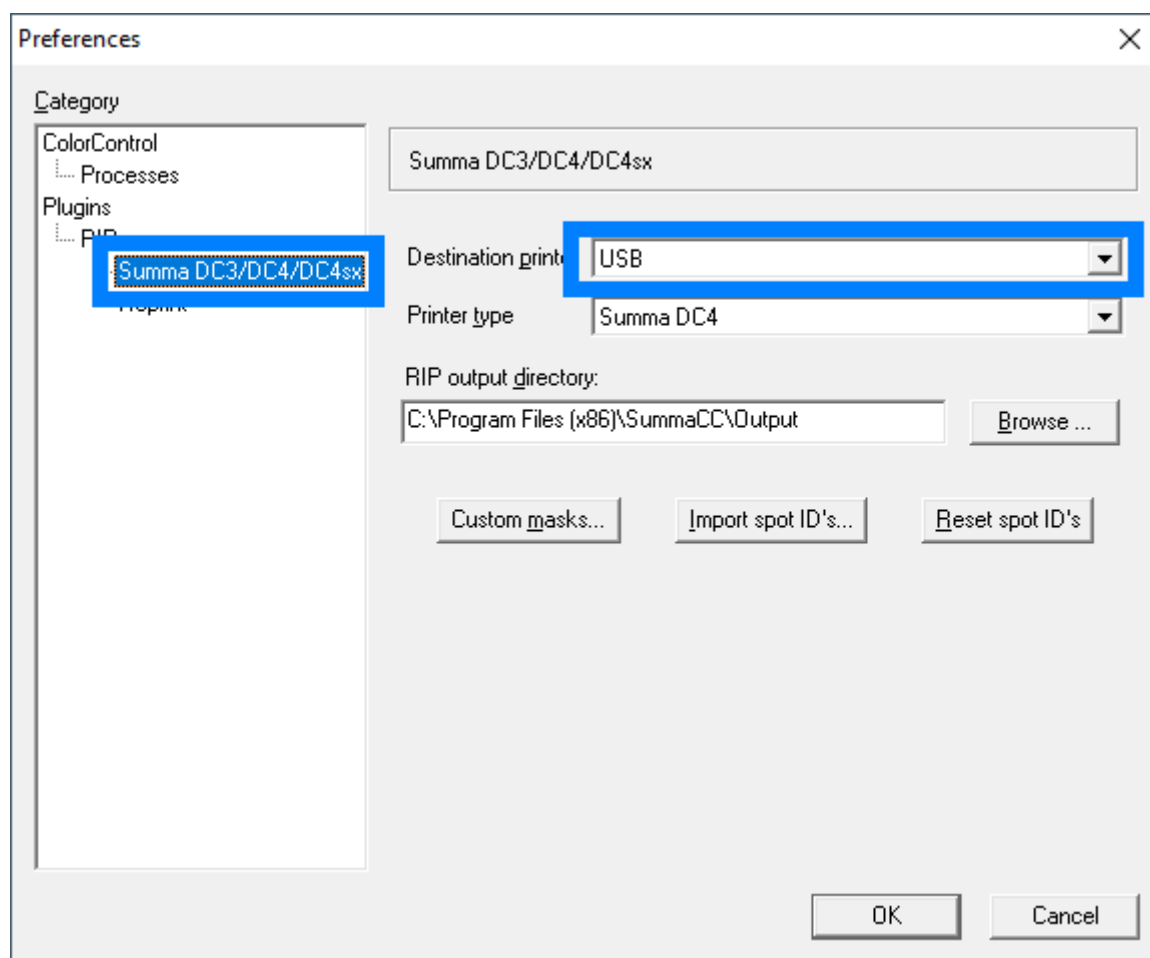
- Click [View] – [Preferences].



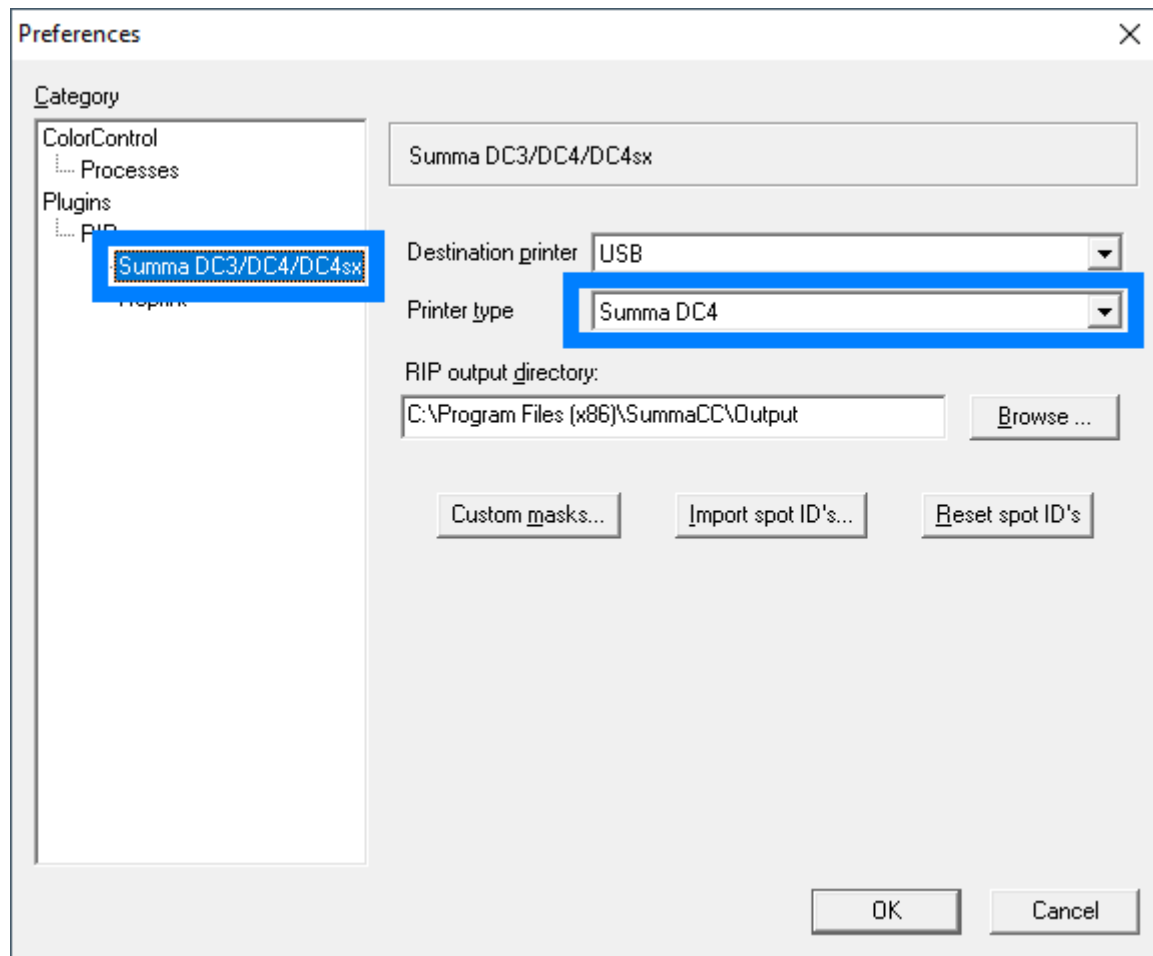
- In the *Preferences* dialog, click in the “Category” pane on “Summa DC3/DC4/DC4sx”.



To configure *Summa ColorControl* for use of the selected USB interface, select the option “USB” in the “Destination printer” dropdown box:




Chose the correct machine type, Summa DC3, Summa DC4 or Summa DC4sx:



Plug-ins

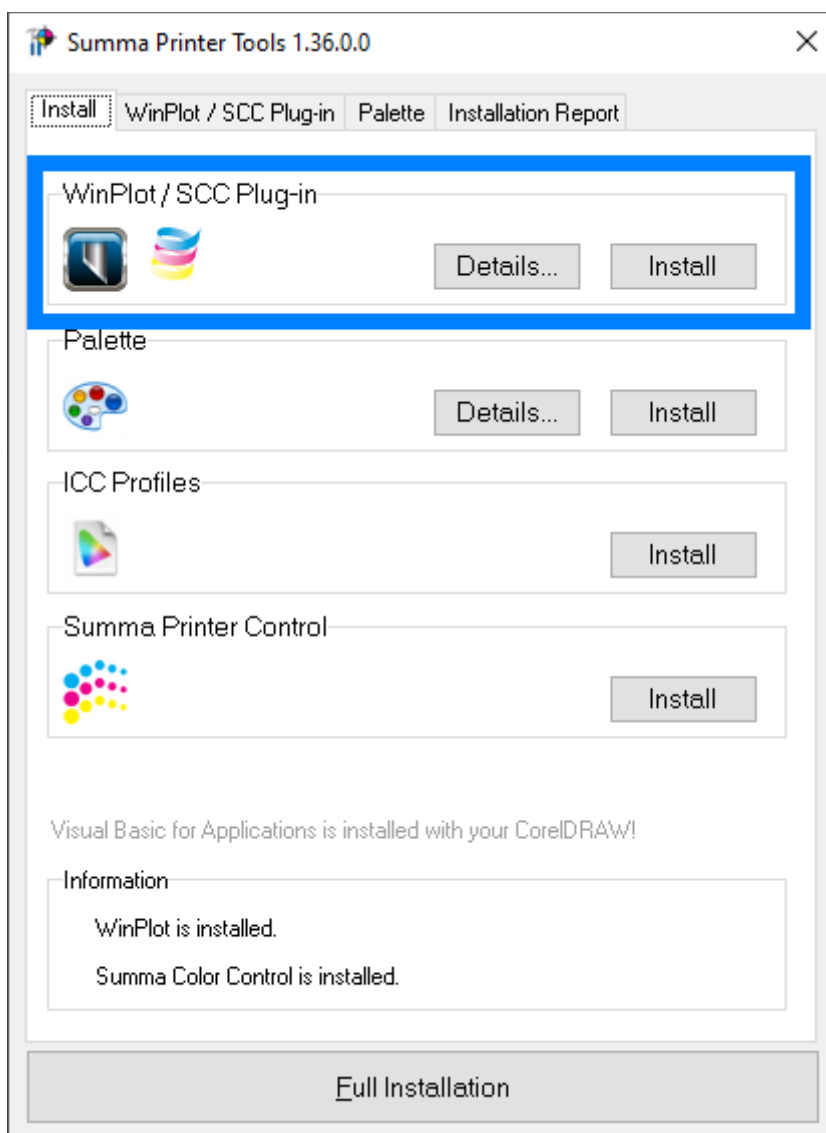
There exists also a *plug-in* for Corel 12->2020 and Illustrator CS1->CC->2020

The *plug-in* can be installed from the software tool Summa Printer Tools, which is available from the support page on the Summa website.

 Summa Printer Tools for DC3/4	Software bundle including all printing-related tools including:	1.36.0.0	03-04-2020
	<p> > Summa Printer Control 1.11.0.0 Software interface for adjusting all Summa DC3/DC4 printing and cutting parameters. Supports Vista/Win 7/Win 8/10, and is compatible with Summa DC series printers only. </p> <p> > Plug-in for CorelDRAW 12 - 2020 and Adobe Illustrator CS - CC 2020 VBA export Plug-in for CorelDRAW & Illustrator to use with ColorControl 7 & Winplot 6.6 or higher. </p> <p> > ICC profile for DC series printers </p>		

These gets rid of the hassle to export a job from the designing software, and importing the job in Summa ColorControl.


Close the design software, then click on the [Install] button to have the plug-ins installed for the supported versions of CorelDRAW and/or Adobe Illustrator.




Keep in mind not all versions of CorelDRAW support plug-ins: only the Graphics Suite supports plug-ins:

CorelDRAW®

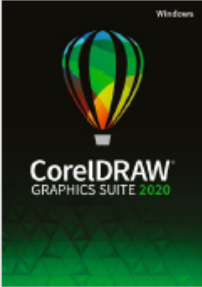
Product Family Comparison



For occasional graphics users and creative consumers



For graphics hobbyists and home businesses



For graphics professionals in small to large businesses

Main Applications			Most Popular
CorelDRAW® 2020	✓* CorelDRAW Essentials 2020	✓* CorelDRAW Standard 2020	✓
Corel PHOTO-PAINT™ 2020		✓* Corel PHOTO-PAINT Standard 2020	✓
Corel Font Manager™ 2020			✓
CAPTURE™			✓
CorelDRAW.app™			✓
Corel AfterShot™ 3 HDR			✓
Key Features & Tools (Highlights)			
Bitmap-to-vector tracing	(✓) Quick Trace (one-click tracing)	✓ PowerTRACE™	✓ PowerTRACE™ (Advanced with AI technology)
Bevel tool, Shadow tool, Spiral, Smooth and Smear tool		✓	✓
Clone Tool, Artistic Media		✓	✓
Alignment guides, Guidelines docker		✓	✓
Symmetry drawing mode, Block Shadow tool, Impact tool, Pointillizer, PhotoCocktail			✓
Object styles, Color styles, Color harmonies			✓
Professional Print options (CMYK features, Composite, Color separations, Postscript, Prepress tabs, large print preview)			✓
Advanced page layout: left & right master pages, custom placeholder text			✓
Enhanced Color management, Color proofing option, spot color support on output			✓
Collaboration tools**			✓
Automation support (VSTA, VBA), Macro Manager			✓

Once the plug-in is installed, the design can be sent to Summa ColorControl from the toolbar (CorelDRAW) or from the File submenu (Adobe Illustrator):

CorelDRAW

Four options are available:

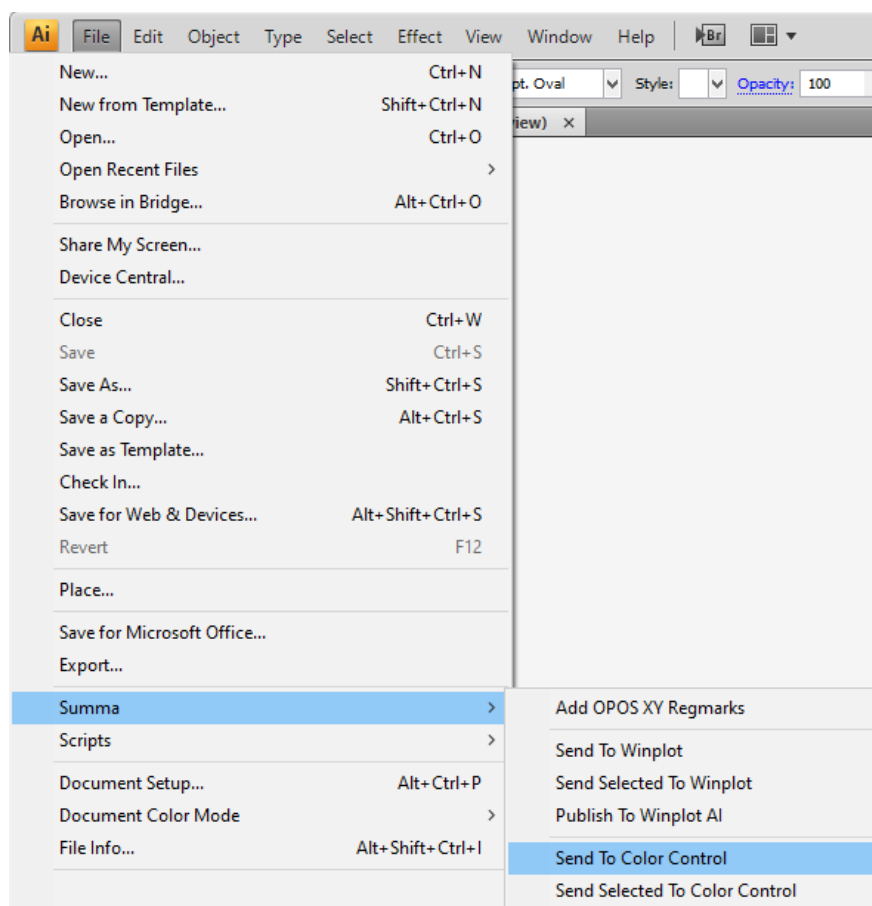
- Send the complete design to Summa ColorControl
- Send only the selected objects to Summa ColorControl
- Select the Summa ICC Profile



Adobe Illustrator

Three options are available:

- Send the complete design to Summa ColorControl
- Send only the selected objects to Summa ColorControl

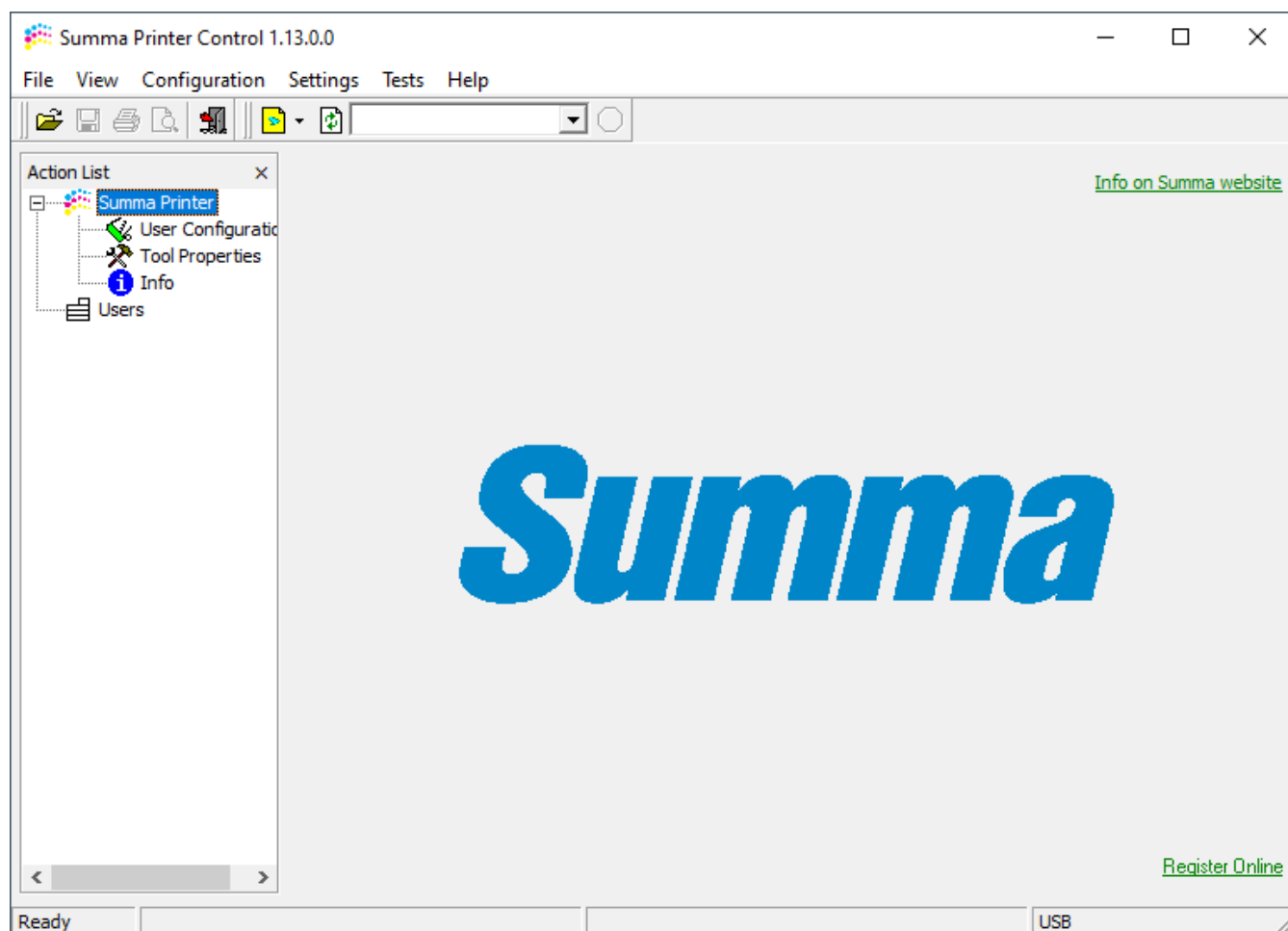


Summa Printer Control


The Summa Printer Control program basically has the same functions as the control panel.

The program Summa Printer Control can be used to:

- Control all parameters of the printer-cutter
- Perform tests
- Send files to the printer-cutter
- Upgrade the firmware of the printer-cutter



Summa Printer Control can be installed from the software tool *Summa Printer Tools for DC3/4*, which is available from the support page on the Summa website.

 Summa Printer Tools for DC3/4	Software bundle including all printing-related tools including:	1.36.0.0	03-04-2020
--	---	----------	------------

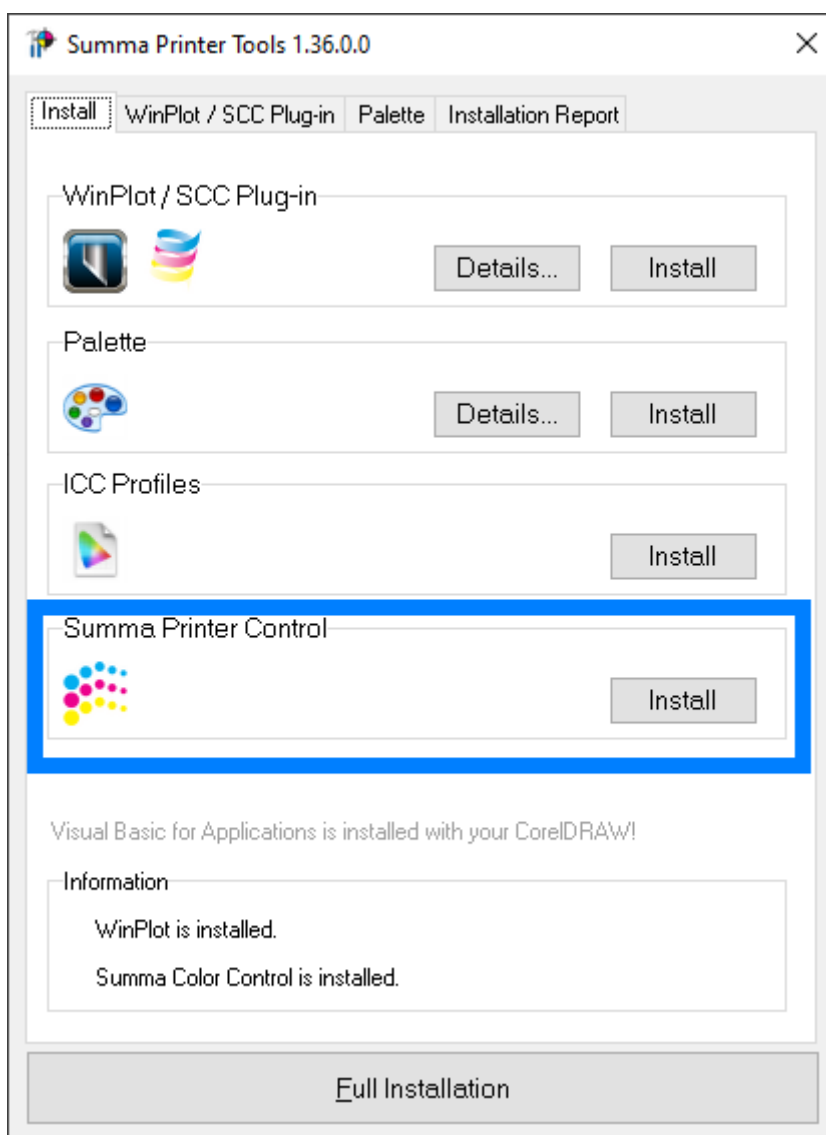
> **Summa Printer Control 1.11.0.0**

Software interface for adjusting all Summa DC3/DC4 printing and cutting parameters. Supports Vista/Win 7/Win 8/10, and is compatible with Summa DC series printers only.

> **Plug-in for CorelDRAW 12 - 2020 and Adobe Illustrator CS - CC 2020**

VBA export Plug-in for CorelDRAW & Illustrator to use with ColorControl 7 & Winplot 6.6 or higher.

> **ICC profile for DC series printers**



Revised January 5, 2023