

## Firmware upgrade on SummaSign Pro & Pro SL


This procedure describes how to upgrade the firmware on a SummaSign Pro or SummaSign Pro SL series cutter.

It is not necessary to load media in the cutter to perform the firmware upgrade.

### Requirements

A Windows computer is needed to run Summa Cutter Control 4 on it.




Summa Cutter Control 4 can be installed from Summa Cutter Tools, and is available from the support page of the Summa website: <https://www.summa.com/en/support/software-firmware/>

 <b>Summa Cutter Tools</b>	Software bundle including all cutting related tools including:	2.18	21-03-2022
	<div><div><b>&gt; Summa Cutter Control 4.20.0.0</b></div><div>Software interface for adjusting parameters on Summa legacy cutter, including speed, mode, pressure, blade offset and much more. Supports Vista/Win 7/Win 8/10.</div></div>		
	<div><div><b>&gt; Plug-in for CorelDRAW 12 - 2022 and Adobe Illustrator CS - CC 2022</b></div><div>Plug-in for CorelDRAW &amp; Illustrator to use with Winplot 6.6 or higher.</div></div>		

In case the USB port is used to upgrade the firmware, then the USB driver needs to be installed.

This driver is available from the support page of the Summa website:  
<https://www.summa.com/en/support/software-firmware/>

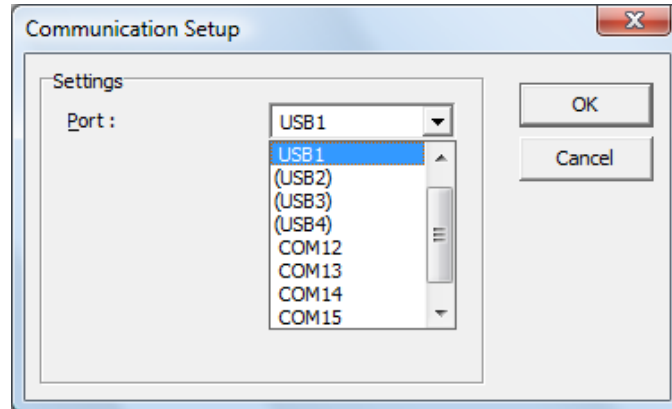
### Vinyl Cutters

USB Drivers	Description	Version	Date
 <b>USB Cutter driver</b>	USB driver for Windows 7, 8, 8.1 & 10	10.0 & 7.0	18-06-2020
 <b>Legacy USB driver</b>	Summa device driver for Windows XP, Vista	6.4	11-01-2016
 <b>OPOS-CAM USB driver</b>	USB Camera driver for Windows 7, 8, 8.1 & 10	1.0.136	08-05-2014

Download the USB driver. Double click on the downloaded driver to start the install process. Follow the install wizard to complete the install.

Before the program can be used, the communication interface needs to be selected and configured to match the connection type (USB or RS232) and communication parameters.

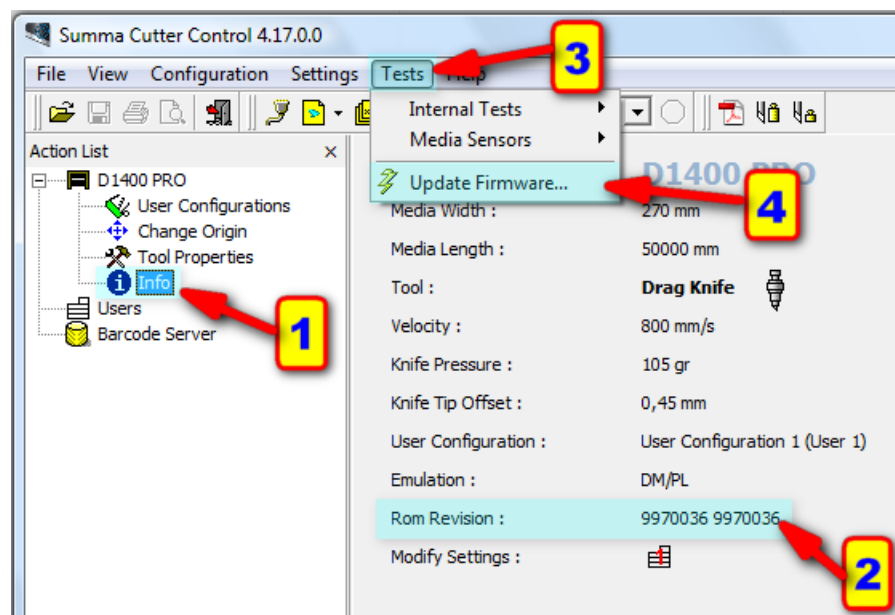
Click [Configuration] – [Port], and select the port the cutter is connected to:



USB-ports listed between round brackets are not available, usually because the cutter was not connected using the USB interface and/or powered on, or was not configured for the listed USB port.

## Firmware Version and Revision Check


You can check the current firmware version with Summa Cutter Control. Clicking on Info (1) will read some information from the cutter and displays the Rom Version and Revision (2).




## Firmware Download

The firmware is available for download from the support page of the Summa website:

The SummaSign Pro uses ROM version MD9955.

 <b>SummaSign Firmware, MD9955</b>	The latest internal programming for older, non-USB SummaCut plotters with Serial and Parallel ports.	26	16-08-2011
---	--	----	------------

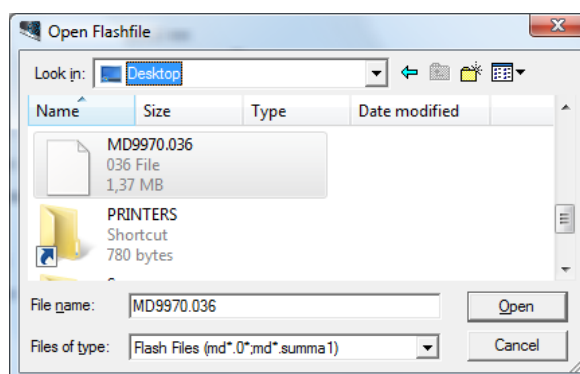
The SummaSign Pro SL uses ROM version MD9970.

 <b>SummaSign SL Firmware, MD9970</b>	The latest internal programming for all SummaSign Pro SL plotters (with USB connector).	36	26-10-2004
--	---	----	------------

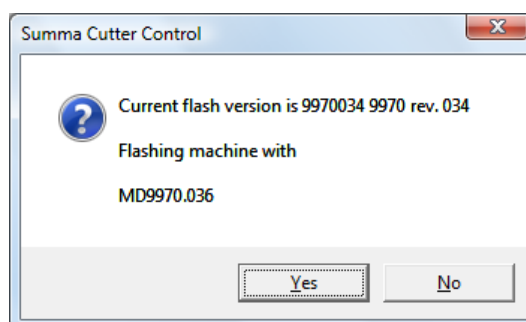
## Firmware Upgrade

Power down the cutter and then switch it back on. This is to clear the internal buffers and memory for the new firmware.

Click on Tests (3) and Update Firmware... (4). Navigate to the folder where you downloaded the latest firmware and select the new firmware.



Summa Cutter Control then asks to confirm to upgrade the cutter with the selected file:



This will start the upgrade.

The firmware upgrade progress can be followed on the display of the cutter:

```
READING DATA
xxxxxx -- xxx

ERASING FLASH
SECTOR x/18

PROGRAMMING
SECTOR x/18

UPGRADE DONE
REBOOT
```

When the last message (UPGRADE DONE, REBOOT) is displayed, power down and then power up the cutter to complete the upgrade.



**WARNING:** POWERING DOWN THE UNIT TOO EARLY WILL CAUSE DAMAGE TO THE MACHINE.

Revised January 17, 2023